

Marge's Little Lulu – Vol. 1 No. 77 (November)

Evaluation Date: April 4, 2026



SUMMARY OF OBSERVATIONS

This comic retains the front cover, back cover, centerfold, and all photographed interior pages. Overall presentation is strong, with the front cover displaying good color clarity and intact artwork. Interior pages are complete, bright, and readable with consistent age-related toning. The binding remains structurally intact.

A **very mild spine roll** is visible, confirmed by both the spine profile image and a subtle plane deviation visible on the front cover photograph. The roll is uniform and does not distort the spine or artwork. Both staples are present and embedded, showing **very mild surface oxidation only**, without rust bloom, migration, or surrounding paper damage.

Condition issues are minor and localized. The front cover shows light waviness and small edge wear at corners. The back cover shows uniform toning with light surface dirt. Interior pages show minor edge wear and corner softening only. The brittleness test demonstrates retained flexibility.

FRONT COVER — OBSERVATIONS

Marge's Little Lulu – Vol. 1 No. 77

Photo Condition & Quality:

Image is sharp and evenly lit with full cover, edges, corners, and spine visible.

Observations:

- Cover features **Little Lulu**, flanked by supporting characters beneath a “Talent Show” arrow.
- Colors remain strong; no fading observed.
- Surface gloss remains present.
- **Light waviness** visible as gentle undulation when viewed flat.
- Minor edge wear along the fore edge.
- Corners show light rounding, more noticeable at the lower corners.
- No writing or markings observed.

Overall Impression:

Front cover presents very well with **light waviness and minor edge/corner wear only**.

BACK COVER — OBSERVATIONS

Marge's Little Lulu – Vol. 1 No. 77

Photo Condition & Quality:

Image is clear, evenly lit, and fully framed.

10/1/77 ✓



**DON'T WAIT!
GET THIS FREE
PEN NOW!**

Here's your chance to own a handsome quick-writing ball point pen absolutely FREE. It's this month's FREE gift for new subscribers to Little Lulu comics.

Take a look at this dark green beauty. Think how it will look in your pocket or purse. The shiny golden clip and gold lettering on the side make it even more impressive, and it writes like a whiz.

Thousands of boys and girls are already using their Dell Comics Club ball point pen, so why not get yours right away. Just clip the coupon below and mail it with \$1 for your full year's subscription . . . 12 fun-filled issues . . . to Little Lulu comics. A membership card in the Dell Comics Club and this wonderful ball point pen will be rushed to you absolutely FREE!

NOTE: You don't have to miss this wonderful FREE offer if you are already a subscriber. We'll start your new subscription when the old one expires.

CLIP THE COUPON NOW!

CUT ALONG DOTTED LINE

Dept. 11—L.L. Mail to **DELL PUBLISHING CO., Inc., 10 W. 33rd St., New York 1, N. Y.** Dept. 11—L.L.

(Please use this side for **your own subscription**)

Please enter Subscription to **LITTLE LULU Comics**. Include **FREE BALL POINT PEN** and also Dell Comics Club Membership Certificate.

SUBSCRIPTION RATES: 1 year-12 issues \$1.00
 2 years-24 issues \$1.85 3 years-36 issues \$2.70

I am enclosing remittance for \$ in full payment

Name Age
 St. and No.
 City Zone State
 (Please list additional names on separate sheet)

Canada: 1 yr. \$1.20; 2 yrs. \$2.00; 3 yrs. \$3.00

(Please use this side for **gift subscription**)

Please enter Subscription to **LITTLE LULU Comics**. Include **FREE BALL POINT PEN** and also Dell Comics Club Membership Certificate.

Name Age
 St. and No.
 City Zone State
 (Please list additional names on separate sheet)

I am enclosing remittance for \$ in full payment
ENCLOSE GIFT CARD TO READ FROM:

Donor's Name
 St. and No.
 City Zone State

PLEASE PRINT PLAINLY

Observations:

- Uniform age-related toning across the surface.
- **Light surface dirt/soiling** visible, especially in lighter background areas.
- No stains, tide lines, or moisture damage observed.
- Minor edge wear along perimeter.

Overall Impression:

Back cover shows **normal age toning with light dirt**, structurally intact.

INTERIOR PAGES — OBSERVATIONS

Marge's Little Lulu – Vol. 1 No. 77

Photo Condition & Quality:

Images are sharp and well lit with margins visible.





Observations:

- Pages exhibit **cream to light-tan coloration**.
- Toning is uniform; no isolated staining.
- Minor edge wear and slight corner softening on some pages.
- No tears, chips, or missing panels observed.
- Artwork remains bright and crisp.
- **Indicia confirmation: Marge's Little Lulu, Vol. 1, No. 77, Dell Comics, November.**

Overall Impression:

Interior pages are **clean, complete, and well preserved.**

CENTERFOLD — OBSERVATIONS

Marge's Little Lulu – Vol. 1 No. 77 (November 1954)

Photo Condition & Quality:

Image is sharp, evenly lit, and clearly framed. Both interior pages and the gutter are fully visible, allowing reliable evaluation of attachment and fold integrity.



Observations:

- Centerfold remains **fully attached** at both staples.
- Fold line shows **light compression only**, with no tearing, splitting, or elongation at the staple holes.
- Paper along the fold is intact with no fiber fracture or stress breaks extending into the panels.

Overall Impression:

Centerfold is **structurally sound** with only light, age-consistent fold compression.

SPINE — OBSERVATIONS

Marge's Little Lulu – Vol. 1 No. 77 (November 1954)

Photo Condition & Quality:

Spine and profile image are clear, well lit, and show the full spine length and book alignment.



Observations:

- Spine remains **continuous and intact**, with no splits or separation.
- A **very mild spine roll** is visible, confirmed by:
 - the spine profile view, and
 - a subtle plane deviation visible on the front cover photo.
- The roll is uniform and does not distort the cover artwork or page block alignment.

Overall Impression:

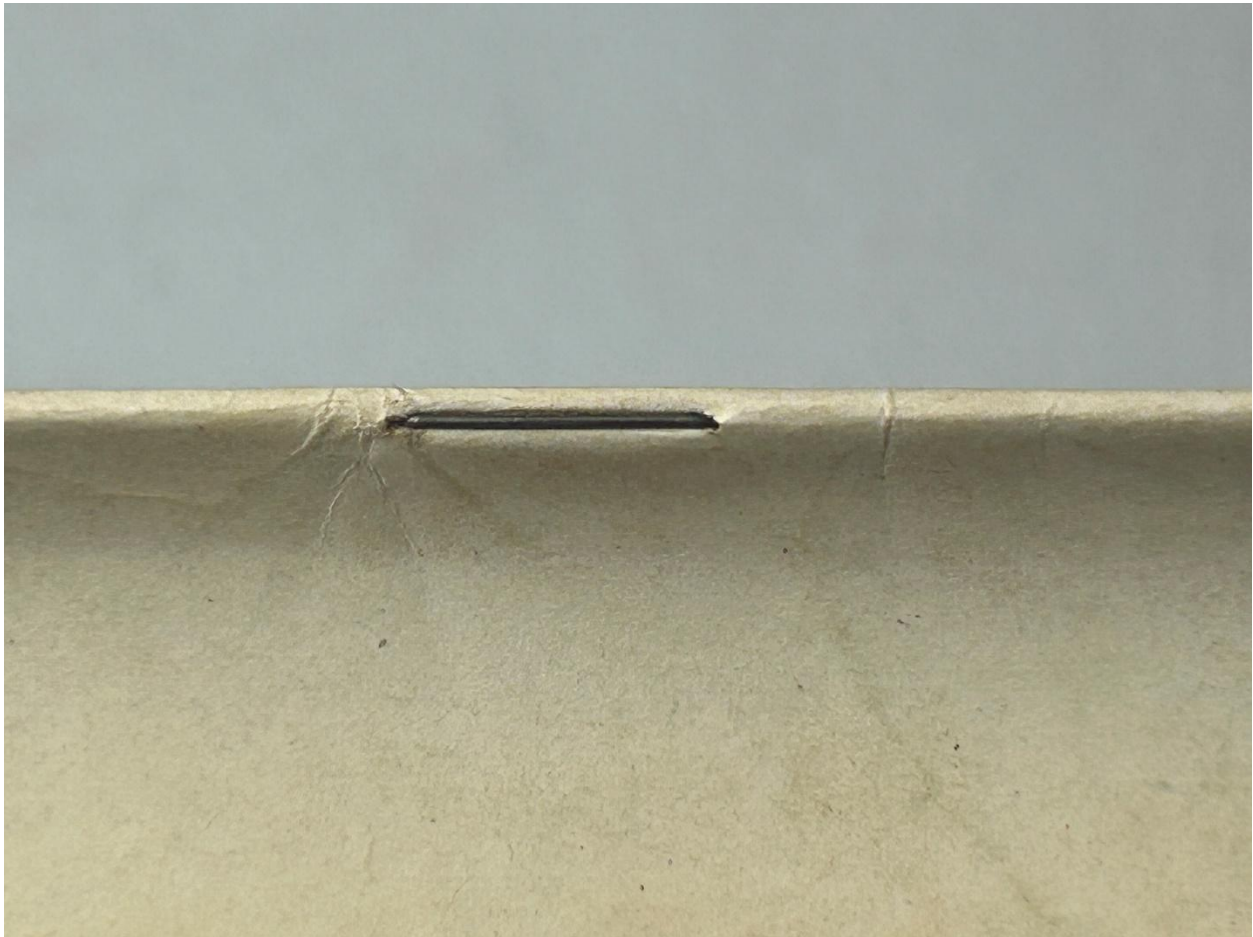
Spine is **structurally strong**, with a **very mild spine roll only**.

UPPER STAPLE — OBSERVATIONS

Marge's Little Lulu – Vol. 1 No. 77 (November 1954)

Photo Condition & Quality:

Macro photo is clear and sharply focused, with the staple and surrounding paper fully visible.



Observations:

- Upper staple is present and firmly embedded.
- Metal shows **very mild surface oxidation** (light darkening only).
- No rust bloom, flaking, or corrosion migration into surrounding paper observed.
- Surrounding paper remains intact with no pull-through or tearing.

Overall Impression:

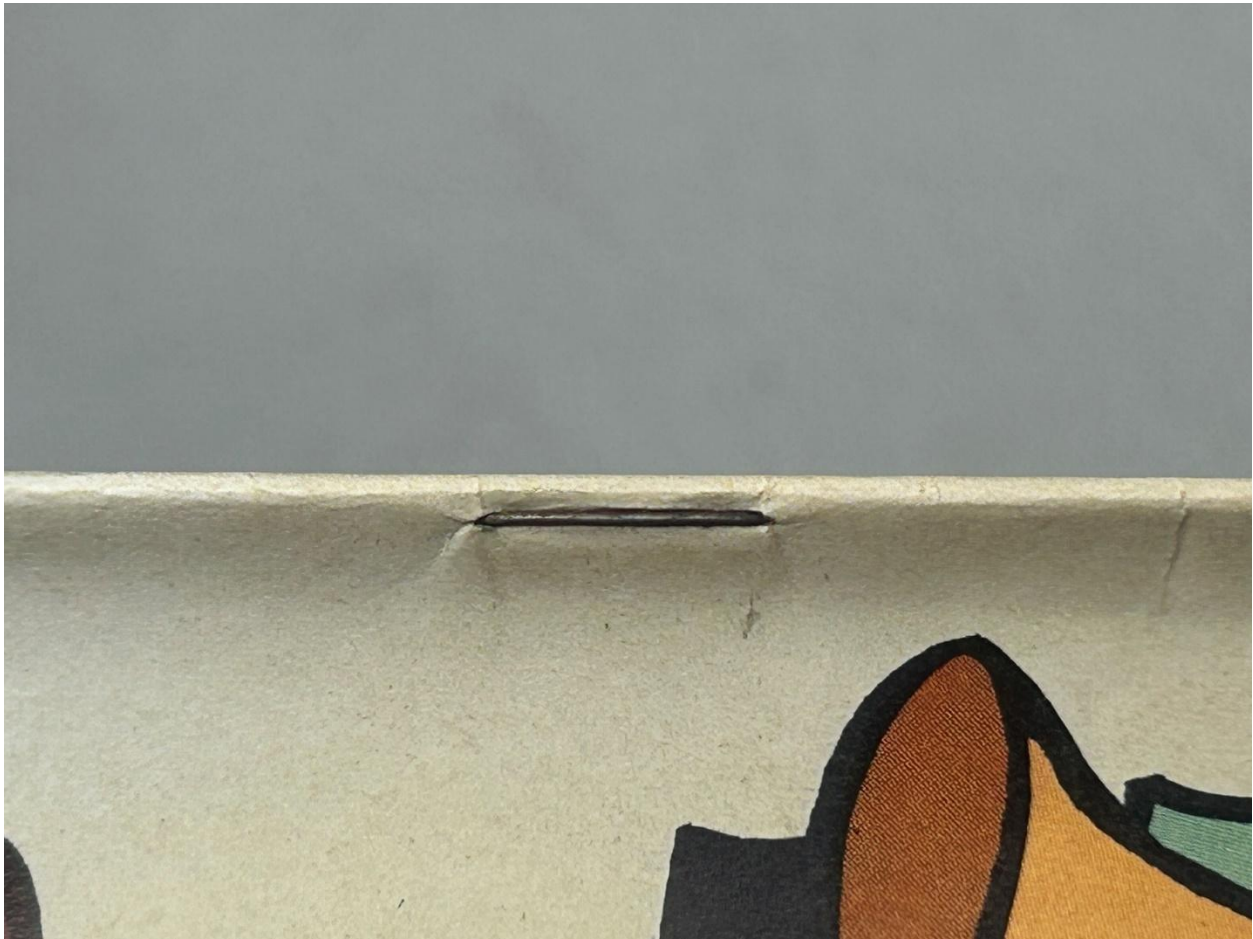
Upper staple is **sound with very mild age-appropriate oxidation.**

LOWER STAPLE — OBSERVATIONS

Marge's Little Lulu – Vol. 1 No. 77 (November 1954)

Photo Condition & Quality:

Macro photo is clear, well lit, and properly framed for evaluation.



Observations:

- Lower staple is present and securely embedded.
- Oxidation is **very mild and comparable to the upper staple**.
- No paper weakening, rust spread, or deformation observed.

Overall Impression:

Lower staple is **structurally stable with very mild surface oxidation only**.

BRITTLINESS TEST — OBSERVATIONS

Marge's Little Lulu – Vol. 1 No. 77 (November 1954)

Photo Condition & Quality:

Image clearly shows a single interior page lifted above the underlying pages, with lighting sufficient to observe bend behavior.



Observations (confined to the tested page):

- Page bends in a **smooth, shallow arc**.
- No visible fiber fracture, flaking, or cracking at the point of flex.
- Paper surface remains continuous along the bend.

Overall Impression:

Tested page demonstrates **retained flexibility** and does **not exhibit brittle behavior**.