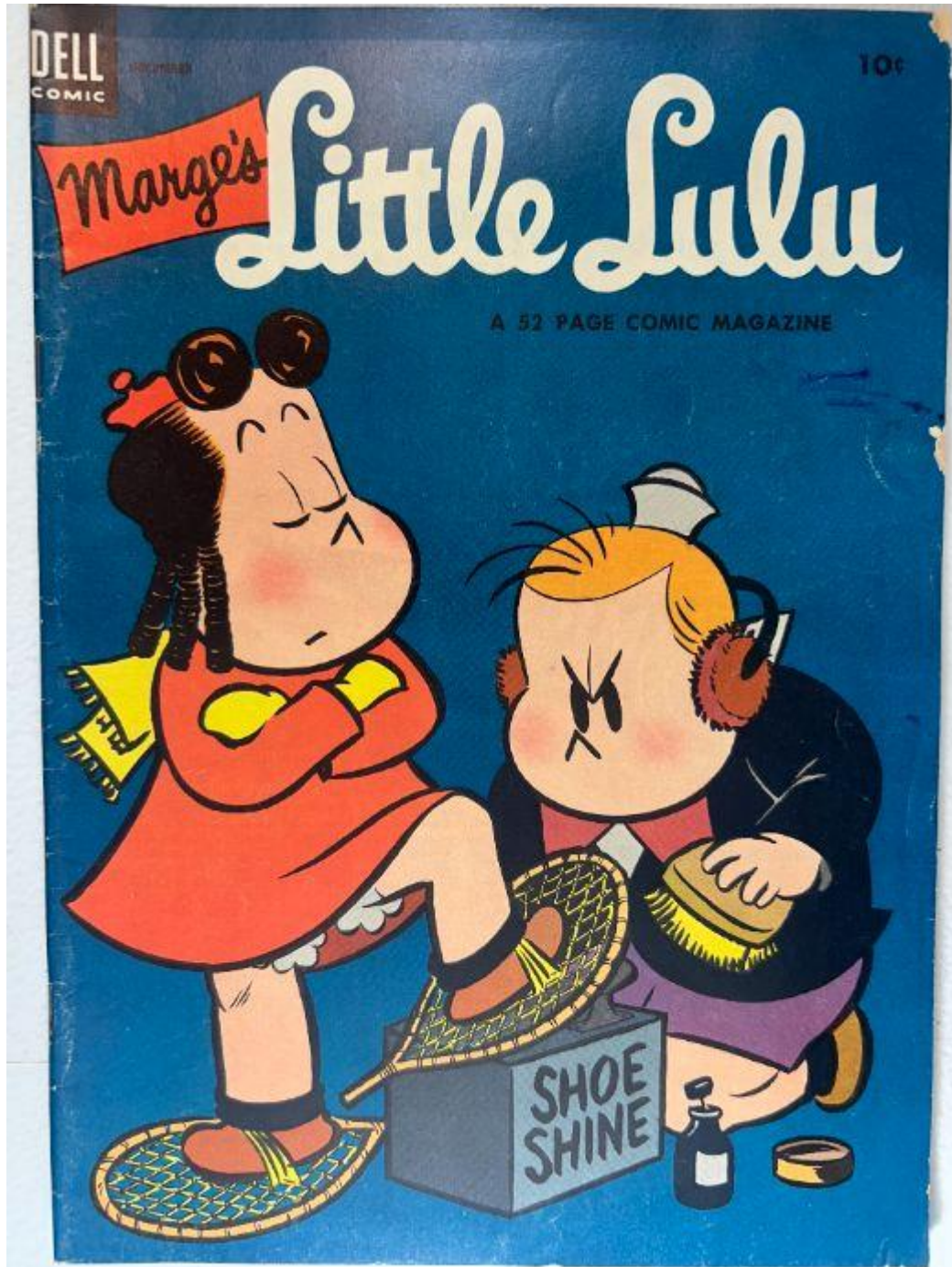


MARGE'S LITTLE LULU VOL. 1 NO. 66 – OCTOBER 1953

## Front Cover Observations

*Marge's Little Lulu Vol. 1 No. 66 (October 1953)*



## Photo Validation

- The photo is clear, well-lit, sharply focused, and fully adequate for evaluation.

## Overall Scene & Composition

- The cover shows two illustrated characters interacting at a shoe-shine setup: one character stands with folded arms and a foot elevated on a **"SHOE SHINE"** box, while the other kneels below, polishing the elevated shoe with a brush and a small cloth.
- A bottle of shoe polish and its cap are positioned near the lower right of the shoe-shine box.
- The background is a uniform blue field, placing full visual emphasis on the two characters and the shoe-shine tools.
- Snowshoes are visible under both characters' feet, adding a humorous situational detail.

## Condition & Surface Characteristics

- Moderate spine wear is visible along the left edge, with several vertical stress lines and areas of color thinning.
- A small chip or missing section of paper appears along the right edge at mid-height.
- Several dark blue scuff marks are present in the upper-right portion of the background.
- Light surface abrasions appear across the blue field, consistent with handling wear.
- Corners show mild rounding, especially the bottom left.

## Color & Printing Quality

- Colors appear bold and saturated, especially the red dress, orange hair, and blue background.
- Linework prints cleanly with no visible misregistration or color drift.
- Lettering and smaller details such as the brush texture and shoe-shine tools are sharply rendered.

## Paper Condition

- Light, even toning is visible along the page edges.
- No moisture rippling, staining, or fiber lifting is evident.
- Paper remains flat and flexible, with no indicators of brittleness.

## Overall Impression

A vividly printed front cover with strong eye appeal and excellent color integrity. Moderate spine wear, a right-edge chip, and several background scuff marks are present, but the cover remains structurally solid and visually appealing for a 1953 issue.



## Photo Validation

- The photo is clear, evenly lit, fully framed, and adequate for evaluation.

## Overall Scene & Composition

- The page is a full-page advertisement promoting a **steel miniature foreign license plate** included inside special Wheaties packages.
- A large illustrated circular vignette at the upper left shows a busy street scene in front of an ornate building with domes, architectural arches, multiple people walking, and a vehicle parked nearby.
- A large red **license plate labeled "IRAN"** is prominently displayed at the center, angled diagonally across the composition.
- Additional sample miniature plates appear along the bottom, including plates marked **Manitoba 53, Hafse 22, Italy H 558, Principauté de Monaco 3146, and Prince Edward Island 32-630.**
- A Wheaties cereal box at the lower right displays the promotion details and features a sample plate printed on the side of the box.
- Promotional text occupies the right half of the page, reading "NOW! a steel miniature Foreign License Plate inside each special Wheaties Package" with "FREE OF EXTRA COST!" highlighted below the main image.

## Condition & Surface Characteristics

- Light edge wear is visible along the top and right borders.
- Mild corner rounding appears on all corners, most pronounced at the upper left.
- Minor scattered surface specks are present, especially in lighter areas of the background.
- No tears, folds, creases, or missing material are visible.

## Color & Printing Quality

- Colors are bright and fully saturated, including bold blues, reds, yellows, and blacks.
- Linework in the illustrated scene is crisp with no visible misregistration.
- Printed text remains sharp and clean throughout the advertisement.
- The license plate graphics and cereal box artwork show consistent ink coverage.

## Paper Condition

- Light age toning is present around the edges, consistent with 1950s newsprint.
- The surface appears smooth, with no staining or moisture rippling.
- Paper remains flexible with no indications of brittleness.

## **Overall Impression**

A sharp, clean, and vividly printed back cover advertisement with strong color, clear linework, and only light age-typical edge wear. The page remains structurally sound and visually appealing for a 1953 Dell comic.

# Inside Pages Observations

Marge's Little Lulu Vol. 1 No. 66 (October 1953)

## Photo Validation

- The photos are clear, evenly lit, fully framed, and adequate for evaluation.

## Inside Page Set 1



## **Overall Scene & Composition**

- The sequence depicts a winter outdoor scenario where a group of children strategizes for a snowball fight.
- Panels show characters observing opponents from a tree platform, planning to tire them out by making them chop down a tree, and gathering behind trees to prepare snowballs.
- A coordinated "charge" attempt results in a comedic failure when one character prematurely attacks.
- The closing panels show the opposing group arriving, leading to confusion and retreat.

## **Condition & Surface Characteristics**

- Heavy edge oxidation is present along all margins.
- Minor surface wear is visible, especially in the white snow areas.
- No tears, folds, or missing paper are present.

## **Color & Printing Quality**

- Blues, reds, and whites remain strong and consistent.
- Linework prints cleanly across all panels with no misregistration.
- Dialogue text is sharp and fully legible.

## **Paper Condition**

- Paper remains flexible with no brittleness indicators.
  - No staining, moisture rippling, or fiber separation visible.
-

## Inside Page Set 2



### Overall Scene & Composition

- This page transitions to an indoor-outdoor story involving a character investigating a household situation while another character provides misleading information.

- Scenes feature doorways, a walkway covered with snow, and interior rooms with furniture and framed pictures.
- A disguise gag occurs where a character attempts to trick another by wearing an oversized coat and hat.
- The final panels involve characters examining a tree and reacting to each other's actions.

### **Condition & Surface Characteristics**

- Heavy oxidation along edges and gutter.
- Small specks and minor surface wear appear in lighter areas.
- No tears or folding are visible.

### **Color & Printing Quality**

- Consistent color saturation, especially in reds and blues.
- Linework remains sharp with no drift or blurring.
- Text prints clearly across all speech balloons.

### **Paper Condition**

- Paper is flexible and stable.
  - No staining, moisture issues, or structural defects.
-

# Inside Page Set 3



## Overall Scene & Composition

- The panels show a continuation of the snowy forest storyline, with characters discussing whether another character hiding inside a snowman is safe.
- Figures walk through a wooded path, discovering what appears to be a snowman standing independently.
- The snowman then appears to move, causing the children to flee in panic, creating a slapstick chase sequence.
- The final panel shows the characters running while asserting that the snowman is following them.

## Condition & Surface Characteristics

- Heavy oxidation visible across the page, typical for Golden Age newsprint.
- Very faint abrasions appear in white snow regions.
- No tears, folds, or missing areas present.

## Color & Printing Quality

- Colors—particularly whites, browns, reds, and blues—remain vivid and evenly printed.
- Lines are clean, with no noticeable misregistration.
- Text remains crisp and readable.

## Paper Condition

- Paper retains flexibility with no brittleness cracking.
- No staining, moisture rippling, or edge chipping visible.

---

## Overall Impression – Inside Pages

A consistent, well-preserved set of interior story pages showing strong color, sharp printing, and uniform oxidation. All three sets display structurally sound paper, no tears or folds, and stable readability. The artwork and dialogue print cleanly throughout, reflecting solid preservation for a 1953 Dell comic.

# Centerfold Observations

Marge's Little Lulu Vol. 1 No. 66 (October 1953)



## Photo Validation

- The photo is clear, evenly lit, fully framed, and adequate for evaluation.

## Overall Scene & Composition

- The left page concludes a winter sledding sequence: one character slides rapidly downhill through trees, another calls for help, and both characters ultimately end up safe on the snow-covered ground.
- A final panel on the left page shows the characters walking away through the snowy landscape, with a small printed **“The End”** tag near the bottom border.
- The right page begins a new story, displayed under the header **“Marge’s Little Lulu.”**
- Children gather indoors comparing different dolls, each demonstrating unique mechanical or interactive features such as rattling, walking, crying, talking, dancing, or opening and closing eyes.
- A central theme emerges of playful competition as characters challenge each other on whose doll performs the best.
- The final panels show the group reacting enthusiastically, building toward the next part of the story.

## Condition & Surface Characteristics

- Heavy oxidation is visible along both page edges, consistent with 1950s newsprint aging.
- Minor surface speckling appears, especially in lighter background areas, but does not obscure text or artwork.
- No tears, folds, creases, or missing material are visible.
- The gutter area shows mild darkening but remains intact with no separation.

## Color & Printing Quality

- Colors remain strong and well-saturated, including the reds, greens, blues, and yellows.
- Linework is clean throughout with no visible misregistration or doubling.
- Text in all speech balloons is sharp and readable.
- Background screen tones appear even and consistent.

## Paper Condition

- Paper remains flexible and stable with no brittleness or cracking.
- No moisture staining, rippling, or other structural defects are present.
- Corners and edges remain intact aside from typical age-related toning.

## Overall Impression

A clean, well-preserved centerfold with vivid color, crisp printing, and age-appropriate oxidation. No structural issues are present, and both pages remain visually strong and fully intact for a 1953 Dell comic.

## Spine Observations

*Marge's Little Lulu Vol. 1 No. 66 (October 1953)*



## Photo Validation

- The photo is clear, side-angled, fully framed, and adequate for spine evaluation.

## Overall Setting & Perspective

- The comic is resting horizontally on a white wire rack, photographed from a low lateral viewpoint.
- The full spine edge is visible, including the alignment of the front cover as it lies flat across the rack.
- The rack structure beneath the comic allows an unobstructed view of the spine's contour and profile.

## Spine Shape & Alignment

- The spine appears straight with **no visible spine roll**, lean, or twisting.
- A slight natural curvature is present, typical of a saddle-stitched Golden Age comic resting under its own weight.
- The front cover sits evenly with no lifting or warping along the spine edge.

## Spine Surface Condition

- Vertical stress lines are visible along the fold, consistent with age and handling.
- Mild color thinning appears where the blue background meets the spine fold.
- No cracks, paper splits, or exposed inner layers are visible.

## Staple Zone Condition

- The upper and lower staple areas show faint impressions through the cover but no protrusion or deformation.
- No tearing or paper distortion is visible around either staple region from this angle.
- No rust migration is visible on the outer spine.

## Edge & Corner Wear

- The lower spine corner shows light rounding but remains intact.
- The upper spine corner shows slight compression without fraying or material loss.

## Overall Impression

A stable and well-preserved spine with age-typical stress lines and minor color wear. No roll, no splitting, and no staple distortion are visible. The spine remains structurally secure for a 1953 Dell comic.

**Next: Staples.**

# Staples Observations

*Marge's Little Lulu Vol. 1 No. 66 (October 1953)*

## Photo Validation

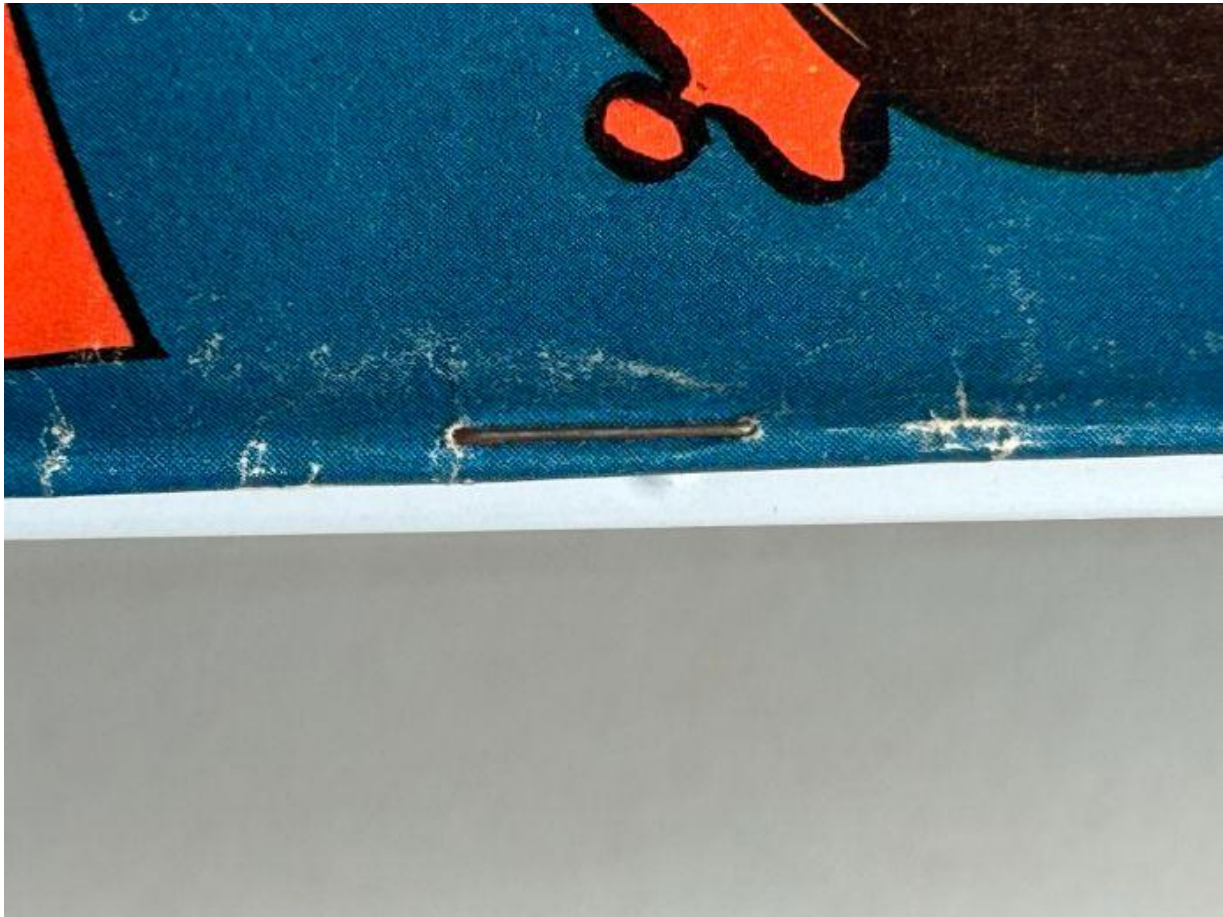
- The photos are clear, close-range, evenly lit, and fully adequate for staple evaluation.

## Upper Staple Area



- The upper staple is firmly seated and lies flat against the spine with no lifting or bending.
- Light oxidation is visible along the metal surface, showing mild darkening but no corrosion spread into the surrounding paper.
- The spine paper around the staple shows **moderate abrasion**, including small white friction marks and surface fiber disturbance.
- A short horizontal stress crease runs across the fold at the staple entry point, but **no tearing, splitting, or paper break** is present.
- The staple hole remains tight, with no sign of movement or pull-through.

## Lower Staple Area



- The lower staple lies flat and remains properly aligned along the spine.
- Mild oxidation is present, consistent with natural aging of the metal.
- Surrounding cover paper shows **light rubbing and shallow edge wear** but no cracking or tearing.
- A small indentation is visible in the fold directly above the staple but does not penetrate or weaken the paper.
- No distortion, loosening, or separation is present.

## Overall Impression

Both staples show **mild oxidation** and **age-typical surface wear** around the entry points. The paper remains intact with no tears, no staple pull-through, and no structural instability. The staple zones appear secure and stable for a 1953 Dell issue.

# Brittleness Test Observations

*Marge's Little Lulu Vol. 1 No. 66 (October 1953)*



## Photo Validation

- The photo is clear, close-range, properly lit, and fully adequate for brittleness evaluation.

## Overall View of the Test

- The lifted page corner shows the top printed sheet and the underlying sheet clearly separated for inspection, allowing full visibility of fiber response under stress.
- The page is being bent gently between two fingertips with a controlled upward arc.

## Page Flex Response

- The page curves smoothly without forming a hard crease.
- No cracking, splitting, or whitening of fibers is visible along the bend.
- The lifted corner holds shape without producing flakes or loose fibers.

## Color & Oxidation Indicators

- The paper exhibits deep tan oxidation typical of Golden Age Dell newsprint.
- The underside shows slightly darker oxidation but no moisture spots or discoloration rings.

## Surface Texture & Fiber Condition

- The sheet has a dry, matte texture but does **not** shed fibers or powder.
- Edges remain intact with no fraying or micro-tears visible.
- The fold area shows no disruption, softening, or fiber separation.

## Mechanical Stress Behavior

- The page resists slightly, as expected for oxidized 1950s paper, but bends without producing a snap or audible break.
- No stress lines or hinge-lines appear during the lift.
- The corner relaxes back into place naturally.

## Overall Impression

The page shows **advanced oxidation** but remains **flexible and not brittle**. The lifted corner exhibits no fiber failure, cracking, or stress-induced damage, indicating the paper is aged but structurally stable.