

MARGE'S LITTLE LULU VOL. 1 NO. 64 – SEPTEMBER 1953

Front Cover



Photo Validation

- The photo is clear, fully framed, evenly lit, and adequate for evaluation.

Front Cover Observations

Marge's Little Lulu Vol. 1 No. 64 (September 1953)

Overall Scene & Composition

- The cover depicts a child holding a bowl while walking toward a small dog standing beside a doghouse with a red chimney.
- The child is dressed in a red outfit and is positioned in the center foreground.
- The doghouse is painted in yellow and blue, placed on a green grassy patch with small flowers.
- The background features a large blue cloud-shaped backdrop set against an off-white field.
- The title "**Marge's Little Lulu**" is printed prominently at the top in bold lettering, with "Marge's" inside a red banner.
- The Dell Comics logo appears in the upper-left corner with the word "**OCTOBER.**"
- The price **10¢** is printed in the upper-right corner, and "**A 52 PAGE COMIC MAGAZINE**" is centered below the title.

Condition & Surface Characteristics

- Light to moderate spine wear is present, including visible stress lines and minor color thinning along the fold.
- Edge wear is visible along the top and bottom margins, with slight corner softening.
- Small scattered marks appear on the off-white background.
- No major creases, tears, or missing material are visible.

Color & Printing Quality

- The blue background, red dress, and yellow doghouse retain strong, saturated color.
- Linework remains crisp across all figures and lettering.
- No misregistration or shifted ink layers observed.
- The off-white background shows natural aging but prints cleanly.

Paper Condition

- Light uniform age toning across the entire cover.
- No staining, moisture rippling, or fiber lifting is visible.
- Paper surface appears smooth and intact.

Overall Impression

A bright and well-preserved front cover with strong colors and clean printing. Moderate spine wear and light edge abrasion are present, but no structural defects. The artwork remains sharp and visually appealing for a 1953 issue.

Back Cover



Photo Validation

- The photo is clear, evenly lit, fully framed, and adequate for evaluation.

Back Cover Observations

Marge's Little Lulu Vol. 1 No. 64 (September 1953)

Overall Scene & Composition

- The back cover is a Wheaties advertisement built in multi-panel comic format featuring baseball-themed instructional scenes.
- The top section contains a large headline promoting stamina, accompanied by an illustration of a pitcher being coached on mechanics.
- A portrait photograph of a baseball player in uniform appears to the right, framed with a printed signature beneath.
- Mid-page panels show demonstrations of pitching technique, training advice, and a breakfast table scene with cereal prominently displayed.
- The bottom row of panels includes an in-game action moment showing a diving catch, concluding with a promotional Wheaties slogan and product illustration.

Condition & Surface Characteristics

- Light age toning is visible across the entire page, most noticeable in the off-white border areas.
- Edge wear includes faint abrasions and soft rounding along the upper-left and lower-right corners.
- Minor isolated specks occur within lighter background regions but do not obscure printed elements.
- No creases, folds, tears, or missing material are observed.

Color & Printing Quality

- Colors retain strong saturation, especially reds, yellows, greens, and blues in both illustrations and product imagery.
- Linework prints cleanly with no visible misregistration in the comic-style panels.
- The portrait photograph maintains clear contrast and smooth tonal transitions.
- Text and speech balloons appear sharp and fully legible.

Paper Condition

- Mild, even oxidation is present along the margins, consistent with 1950s newsprint.
- Paper fibers appear intact with no brittleness indicators.
- No staining, moisture rippling, or surface lifting is visible.

Overall Impression

A well-preserved back cover advertisement showing strong color, clean printing, minimal edge wear, and stable paper. The layout and artwork remain sharp and present well for a 1953 Dell issue.

Inside Pages Observations

Marge's Little Lulu Vol. 1 No. 64 (September 1953)

Inside Page Set 1 – "Tubby the Talking Dog"



Overall Scene & Composition

- The page presents a multi-panel sequence featuring Tubby interacting with an individual on a park bench, including dialogue about hunger, a talking dog, and a humorous misunderstanding leading to a negotiation.
- The panels progress left to right with consistent pacing and a gag-driven narrative structure.
- Backgrounds show park benches, trees, and simple environmental elements.

Condition & Surface Characteristics

- Heavy oxidation visible throughout the page, most pronounced along the margins.
- Minor abrasions appear near corners and outer panel borders.
- No tears, folding, or missing material observed.

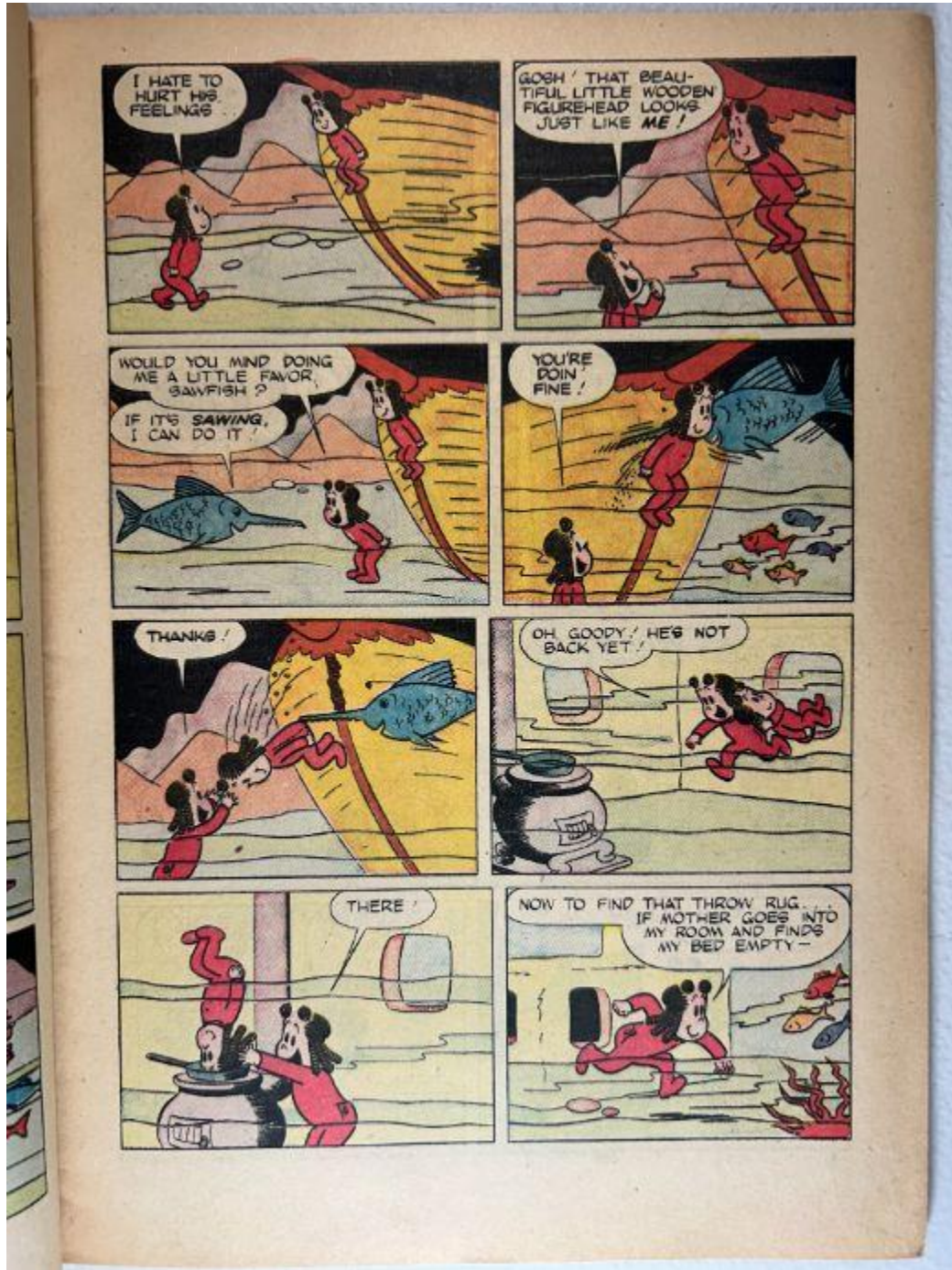
Color & Printing Quality

- Reds, blues, greens, and yellows remain strong and saturated.
- Linework is crisp and stable across all panels.
- No misregistration or smearing appears in dialogue or artwork.

Paper Condition

- Even age-toning typical of Golden Age newsprint.
 - No brittleness detected; fibers remain intact.
 - No staining or water indicators.
-

Inside Page Set 2 – Fishing / Wooden Figure Story



Overall Scene & Composition

- A multi-panel sequence set near a shoreline with a character approaching a large wooden figure, requesting assistance, and later completing a short task indoors.
- Fish, water, waves, and shoreline geography appear throughout the panels.
- Action transitions from outdoor to indoor settings fluidly.

Condition & Surface Characteristics

- Noticeable oxidation around the edges and page margins.
- Minor surface rubbing visible in lighter color areas.
- Gutter remains intact with no cracking.

Color & Printing Quality

- Strong blues, oranges, and yellows in water and shoreline elements.
- Clean panel borders and well-printed linework.
- No color drift or printing defects evident.

Paper Condition

- Stable and flexible despite oxidation.
 - No chips, splits, or creases.
-

Inside Page Set 3 – “Two Scents Worth”

2

Overall Scene & Composition

- A multi-panel story involving Little Lulu and friends preparing for a picnic and discussing plans while interacting in domestic interiors.
- Panels feature kitchen, living room, and entryway scenes with expressive dialogue exchanges.
- The layout maintains a consistent rhythm with balanced panel sizes.

Condition & Surface Characteristics

- Oxidation evident across entire sheet, heaviest along the right margin.
- Minor specking appears in off-white background regions.
- No structural damage present.

Color & Printing Quality

- Pastel colors common to Little Lulu interiors remain consistent.
- Text prints clearly and evenly.
- No blurred linework or misaligned color layers.

Paper Condition

- Paper fibers intact with no brittleness or cracking.
 - No moisture signs or staining.
-

Inside Page Set 4 – “Ol’ Witch Hazel and the Villainous Vine”

Overall Scene & Composition

- Panels depict characters interacting near a wooded area where one becomes entangled in a bush or vine.
- The sequence includes forest settings, ground foliage, tree trunks, and expressive dialogue.
- Action progresses from entanglement to escape in a comedic arc.

Condition & Surface Characteristics

- Heavy oxidation present, typical of Dell issues from this era.
- Slight darkening along the gutter but no splitting.
- Minimal surface wear visible in green background areas.

Color & Printing Quality

- Greens, yellows, and reds show strong saturation.
- Linework is sharp and consistent across the page.
- No smudging or print defects.

Paper Condition

- Paper remains flexible despite visible aging.
- No tears, holes, or chips present.
- Edges remain smooth and intact.

Overall Impression – Inside Pages

The interior pages display strong color retention, stable printing quality, and only age-typical oxidation. All sheets remain fully intact, flexible, and structurally sound with no tears, chips, or moisture damage. The storytelling sequences print cleanly with clear text and consistent artwork throughout.

Next: Centerfold.

Provide your feedback on BizChat

Inside Pages

(Photo received)

Photo Validation

- The photo is clear, well-lit, shows the full two-page spread, and is adequate for evaluation.

Inside Pages Observations

Marge's Little Lulu Vol. 1 No. 64 (September 1953)

Overall Scene & Composition

- The two-page sequence features multiple characters moving through indoor and outdoor settings, transitioning from interior rooms to an outdoor chase scene and a gathering of townspeople.
- The left page shows a character attempting to track movement through a doorway, then exiting and circling to the front steps via an exterior staircase.
- Subsequent panels depict a group of individuals observing or commenting on an unfolding mix-up involving mistaken identity and a crowd gathering in response.
- In later panels, a chase unfolds involving a character running outside while calling for help, with several others reacting.
- The sequence concludes with characters returning indoors, discussing a "skunk," and making a polite request for assistance involving the animal.

Condition & Surface Characteristics

- Oxidation is heavy along the gutter and outer margins, typical for Golden Age newsprint.
- Slight darkening appears in the central fold area, but the paper remains intact with no splitting.
- Minor surface wear appears in lighter background areas but does not obscure artwork or text.
- No tears, chips, folds, or missing sections are present.

Color & Printing Quality

- Colors across both pages remain strong, especially reds, blues, greens, and yellows used in character clothing and backgrounds.
- Linework is crisp across all panels with no misregistration.
- Text in speech balloons prints cleanly and remains fully legible.
- Shading and panel borders remain consistent across both pages.

Paper Condition

- Paper fibers remain stable and flexible despite visible aging.
- No signs of brittleness, cracking, staining, or moisture rippling are present.
- Edges show only mild rounding and natural 1950s toning.

Overall Impression

A well-preserved interior spread with strong color, clean printing, intact gutter structure, and only age-typical oxidation. The paper remains stable, and the storytelling sequence prints sharply with no structural defects.

Centerfold Observations

Marge's Little Lulu Vol. 1 No. 64 (September 1953)



Photo Validation

- The photo is clear, fully captures the two-page spread, well-lit, and adequate for evaluation.

Overall Scene & Composition

- The centerfold presents a two-page sequence showing characters moving between interior and exterior settings, including a staircase, a doorway, a yard, and a gathering of townspeople.
- Panels depict a character attempting to track another's movement through rooms, then circling outside toward a front entry.
- A crowd scene appears with numerous characters reacting to an unexpected situation involving clothing confusion and mistaken identity.
- Additional panels show a frantic outdoor chase involving multiple characters calling for help.
- The sequence concludes with a conversation indoors where characters discuss capturing a skunk and making a request related to it.

Condition & Surface Characteristics

- Heavy age-related oxidation is present throughout both pages, especially along outer edges and the gutter.
- Minor surface wear appears in lighter color regions but does not obscure artwork.
- The gutter shows mild darkening and spine stress but no tearing or separation.
- No chips, folds, or missing portions are visible.

Color & Printing Quality

- Colors remain strong and vivid—reds, blues, greens, and yellows are consistently saturated.
- Linework remains sharp across all panels with no misregistration.
- Lettering and dialogue are clean, stable, and readable across both pages.

Paper Condition

- Paper remains flexible with no brittleness, cracking, or fiber split at the edges.
- No moisture rippling, staining, or discoloration beyond natural oxidation is present.
- Edges remain intact with only mild rounding.

Overall Impression

A well-preserved centerfold exhibiting strong printing quality, intact paper, and age-typical oxidation. No structural defects beyond normal Golden Age wear.

Spine Observations

Marge's Little Lulu Vol. 1 No. 64 (September 1953)



Photo Validation

- The photo is clear, side-angled, shows the full spine area, and is adequate for evaluation.

Overall Setting & Perspective

- The comic rests horizontally on a white wire rack, photographed from a low side angle showing the full spine edge and how the covers align.

Spine Shape & Alignment

- The spine appears straight with no visible roll or lean.
- A natural, shallow curve is present, consistent with saddle-stitched Golden Age comics.

Spine Surface Condition

- Light abrasions and minor color thinning appear along the spine fold.
- Several small vertical stress lines are visible from normal handling.
- No splitting or separation is visible along the fold.

Staple Zone Condition

- Staple impressions are visible beneath the cover paper.
- No swelling, tearing, or pulling around staple areas can be seen from this angle.
- No rust migration is visible.

Edge & Corner Wear

- Lower spine corner shows mild rounding.
- Upper spine corner shows slight compression but remains intact.

Overall Impression

A stable, straight spine showing moderate age-typical wear, with intact structure, light stress lines, and no signs of roll, separation, or staple weakness.

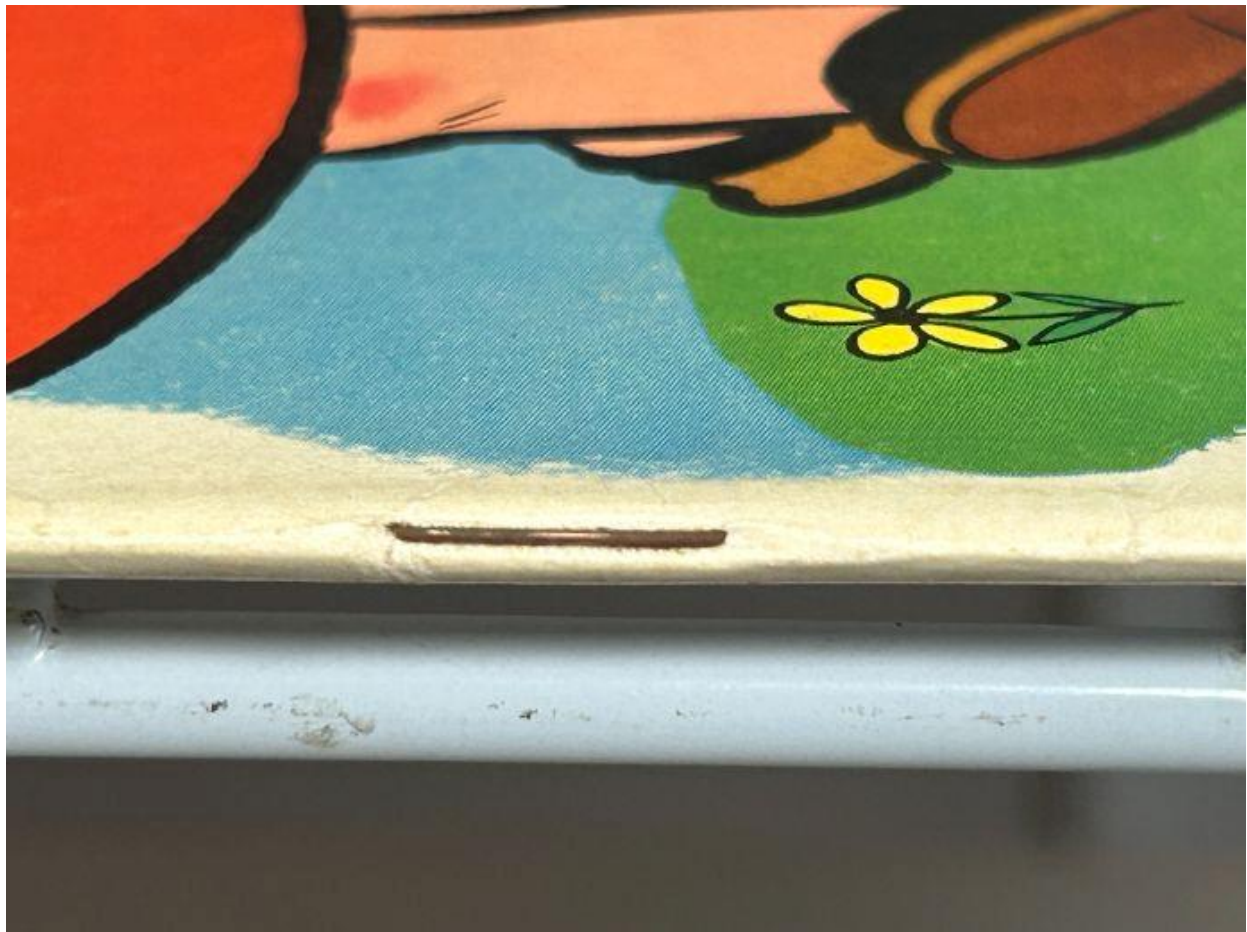
Staples Observations

Marge's Little Lulu Vol. 1 No. 64 (September 1953)

Photo Validation

- The photos are clear, close-range, well-lit, and fully adequate for staple evaluation.

Upper Staple Area



- The upper staple shows visible oxidation along the exposed metal surface, presenting as a brown tone consistent with age-related rusting.
- The staple lies flat and remains fully seated in the spine with no bending or distortion.
- The surrounding cover paper shows mild abrasion and slight compression but no tearing or fiber break.
- The spine fold beneath the staple is slightly stressed yet structurally intact, with no splitting or pull-through.

Lower Staple Area



- The lower staple also displays oxidation, with a similar brown tone along its exposed surface.
- The staple remains firmly anchored in the fold with no lifting or deformation.
- Paper surrounding the staple hole shows minor wear and compression but no cracks or tearing.
- The spine fold exhibits light stress lines but retains overall integrity, without signs of loosening or stress-related damage.

Overall Impression

Both staples show mild-to-moderate oxidation consistent with 1950s newsprint comics but remain structurally sound. No tearing, detachment, or staple pull-through is present, and the spine remains stable with only age-typical stress.

Brittleness Test Observations

Marge's Little Lulu Vol. 1 No. 64 (September 1953)



Photo Validation

- The photo is clear, close-up, shows the page edge under gentle lift, and is adequate for brittleness evaluation.

Overall View of the Test

- The image shows a corner of an interior page being lifted slightly, revealing both the printed surface and the underside of the sheet.

Page Flex Response

- The page bends smoothly with a rounded curve rather than forming a sharp crease, indicating retained flexibility.
- No cracking, snapping, or flaking is visible along the lifted edge.

Color & Oxidation Indicators

- The paper shows uniform deep tan oxidation consistent with aged 1950s newsprint.
- The underside of the page displays slightly darker oxidation but no discoloration rings or moisture effects.

Surface Texture & Fiber Condition

- The surface appears dry and matte but does not exhibit powdering or surface shedding.
- Edge fibers remain intact with no signs of splitting or feathering.

Mechanical Stress Behavior

- The page resists gently but bends without forming stress lines or whitening.
- The sheet maintains structural cohesion and does not show signs of imminent fracture.

Overall Impression

The paper shows advanced oxidation but remains flexible and non-brittle. The lifted corner retains integrity without cracking, placing this page safely below the brittleness threshold for its age.