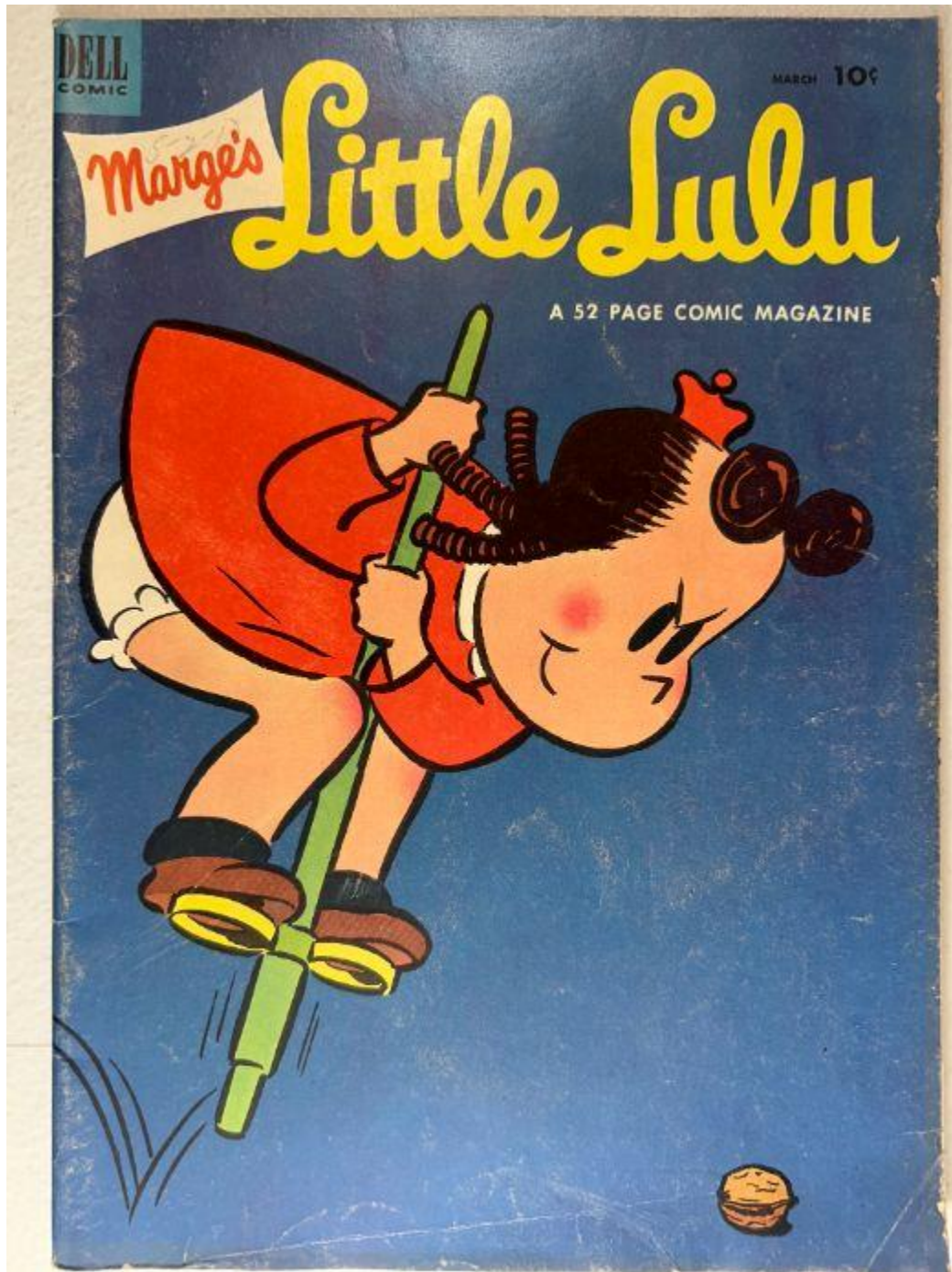


Marge's Little Lulu Vol. 1 No. 57 – March 1953



Front Cover Observations

Marge's Little Lulu Vol. 1 No. 57 – March 1953

Observations

- **Photo validation:** The uploaded image is clear, centered, and shows the entire front cover with sufficient lighting and resolution for evaluation.
- The cover features an illustrated child-like figure performing a downward pogo-stick jump against a solid blue background. The figure's hair, clothing, and shoes are rendered with clean lines, and the pogo stick is angled diagonally from upper right to lower left.
- The blue background shows noticeable scattered scuffing, surface abrasion, and small scratches throughout, more pronounced in the lower half of the cover.
- Title text "**Marge's Little Lulu**" appears at the top in large yellow lettering with a red "Marge's" banner attached.
- Issue information "**MARCH 10¢**" is printed at the top right.
- A **DELL COMIC** logo box is located at the top left.
- Spine shows multiple visible stress lines with intermittent color breaks along the fold.
- Edge wear is present along the right and bottom edges, including light abrasions and rounding of corners.
- Lower right corner shows moderate blunting.
- No tears, missing pieces, stains, or writing observed on the cover.

Overall Impression

A structurally intact front cover with bright color and moderate handling wear, including surface abrasions, corner rounding, and spine stress consistent with mid-grade Golden Age condition.

☑ Back Cover Observations

Marge's Little Lulu Vol. 1 No. 57 – March 1953



Observations

- **Photo validation:** The uploaded image is clear, well-framed, and shows the entire back cover with appropriate lighting for evaluation.
- The back cover features a full-page Wheaties-style sports comic, this one themed around **Sid Abel** in a hockey narrative.
- The top banner reads: “**Sid Abel Sparks in Hockey Duel!**” with a large title panel showing three uniformed hockey players in striped jerseys with skates and padded equipment.
- The following sequence of panels narrates a short story involving recovery from tiredness, needing Wheaties, in-game action, and a dramatic comeback.
- Panel layout includes seven horizontal segments arranged in comic-strip style, each containing a mix of dialogue balloons, caption boxes, and action art.
- Colors are vibrant: strong yellows, reds, greens, blues, and blacks dominate the uniforms, ice textures, and background elements.
- The lower right corner features a product placement panel promoting **Wheaties** cereal with a styled scoreboard graphic.
- Surface wear is visible across the lighter cream background, including small specks, scattered abrasion, and faint discoloration.
- Corners show mild rounding, especially at the lower corners.
- Right edge shows small handling wear but no tears.
- Spine side shows light rubbing but no splitting or structural breaks.
- No writing, marker, tape, or stains observed.

Overall Impression

A clean, fully intact back cover with strong color saturation and only moderate handling wear. Presentable with no major structural defects.

☑ Inside Pages Observations

Marge's Little Lulu Vol. 1 No. 57 - March 1953



Observations

Photo validation: The uploaded inside-page photos are clear, complete, and provide full visibility of all panels, margins, and page edges suitable for evaluation.

Inside Page Set 1 — Story Opening Page (“Little Lulu” header page)

Scene & Panel Content

- The page opens with the **“Marge’s Little Lulu”** title block at the top, followed by a sequence of six story panels.
- The narrative focuses on two children discussing a newspaper story about a reward being offered for the “most polite” child.
- Characters engage in sidewalk conversation, with reactions involving surprise, teasing, and dismissiveness.
- Lower panels introduce a ringing bicycle bell and a mild altercation between characters, followed by speculative dialogue about another character’s attempts at politeness.

Background Elements

- Outdoor suburban environment with sidewalks, fences, lawns, trees, and building edges.
- Perspective remains consistent across panels, emphasizing simple depth and clear visual continuity.

Condition – Paper

- Moderate uniform oxidation across the full page, presenting as tan aging typical of Golden Age newsprint.
- Slightly darker toning along outer edges and bottom margin.
- No visible tears, chips, stains, or writing.
- Edges remain structurally sound with modest corner softening.

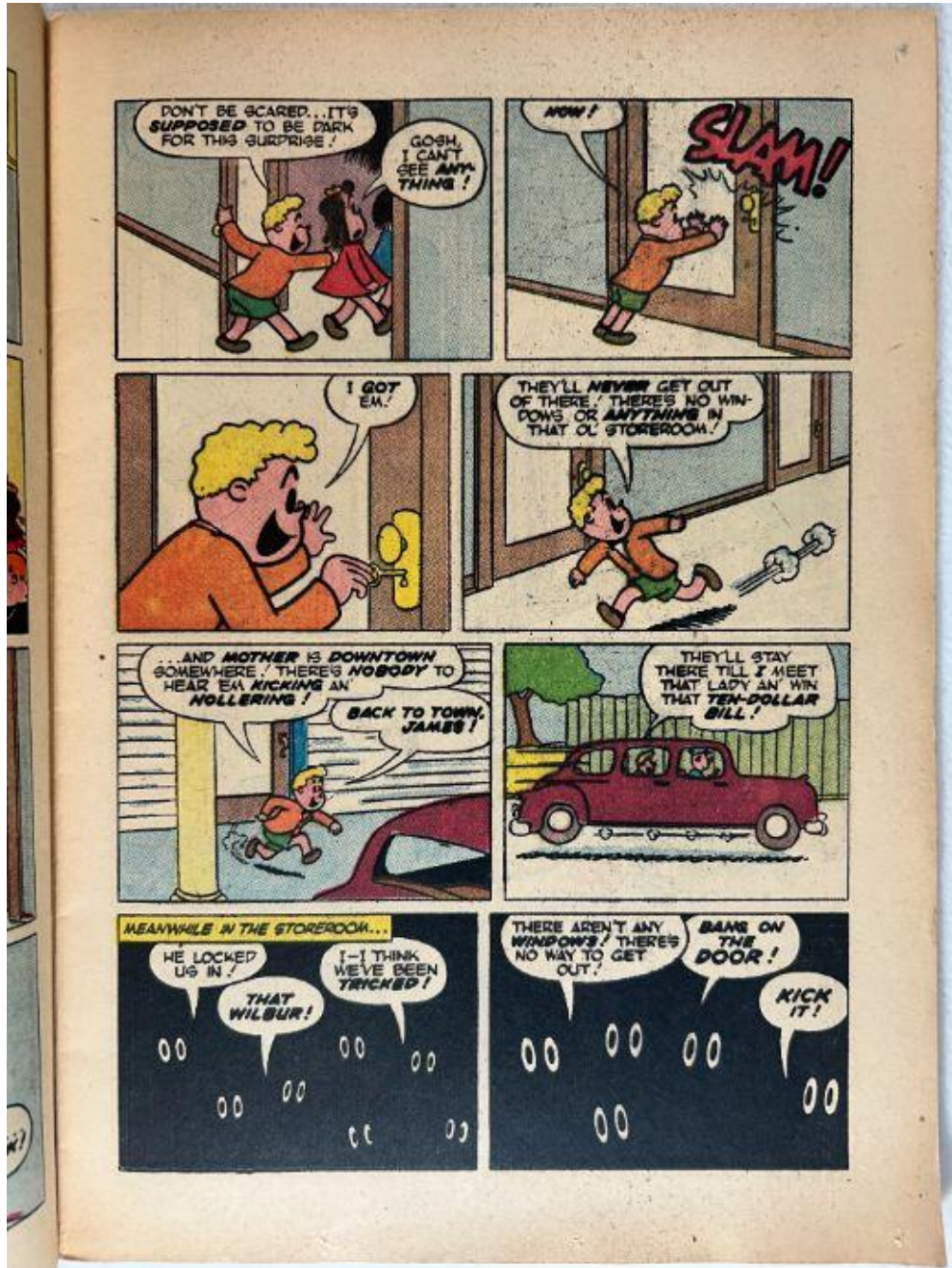
Condition – Printing

- Color saturation is strong—reds, blues, yellows, and flesh tones appear stable.
- Black linework is sharp with no significant registration drift.
- Speech balloon text is clear and free from smearing or ink spread.

Overall Impression

- A well-preserved story-opening page displaying consistent aging, clean printing, and intact structure.

Inside Page Set 2 — Hallway / Storeroom Sequence



Scene & Panel Content

- The narrative shifts to an interior hallway where characters enter a dark room, triggering a door-slamming and lock-in sequence by another child.
- Action proceeds with energetic running, door closing, and a visual depiction of a child sprinting outside to alert others.
- Lower panels show a suburban street with a car, continuing the urgency of the situation.
- Final row depicts a dark storeroom interior rendered as a black background with multiple pairs of white eye-shapes, emphasizing the pitch-black confinement.

Background Elements

- Interior hallway with plain walls, wooden doors, and a simple floor pattern.
- Outdoor panels include driveways, windows, landscaping, and the side profile of a vehicle.

Condition – Paper

- Oxidation consistent with previous page, slightly darker toward gutter and edges.
- No tears, chips, moisture rippling, or offsetting observed.
- Corners lightly rounded but fully intact.

Condition – Printing

- Strong color fidelity, particularly in the orange clothing and red car.
- The black storeroom panels print evenly with clear eye silhouettes.
- No misregistration or ink lift detected.

Overall Impression

- A clean, fully intact interior page with strong panel clarity and uniform aging.
-

Inside Page Set 3 — Goat / Group Decision Sequence

Scene & Panel Content

- Multiple characters gather outdoors to discuss ownership of a goat, referencing fairness, responsibility, and “honorable” decisions.
- Mid-page panels show deliberation and the transition toward returning the goat.
- Lower panels depict the goat tied at a door, with children walking away after resolving the matter.

Background Elements

- Suburban outdoor setting: houses with siding, yards, walkways, shrubs, car edges, and simple perspective lines.
- The goat illustration is repeated across panels, showing movement and mild expression shifts.

Condition – Paper

- Consistent oxidation with slightly heavier toning toward outer margins.
- No structural defects—edges smooth and free of tears.
- Staples show no pull-through in visible areas.

Condition – Printing

- Colors appear stable, with clean whites on the goat and strong reds/blues on characters.
- Linework remains crisp with no blurring.
- Dialogue text remains fully legible.

Overall Impression

- A structurally sound interior page with lively artwork, strong colors, and clean presentation.
-

Inside Page Set 4 — Race / Crowd Sequence (“Little Pioneer” segment)

Scene & Panel Content

- Panels depict a competitive footrace involving a group of figures and a young girl, observed by cheering spectators.
- The race progresses with repeated “PUFF PUFF” exhaustion indicators.
- Individuals collapse one by one as the competition advances.
- Final panels show a crowd cheering in celebration as the girl appears to outlast the participants.

Background Elements

- Fence-lined running path depicted in repeated horizontal compositions.
- Spectator area includes clustered figures, signage, and stylized crowd silhouettes.
- Action panels feature running motion lines and layered character placement.

Condition – Paper

- Heavy oxidation uniform across the page but not indicative of brittleness.
- Slight darkening along top and edge margins.
- No visible tears, stains, or chips.

Condition – Printing

- Color printing remains vivid—bright yellows, reds, and blues throughout the race scenes.
- Black linework stable even in dense crowd areas.
- Repetitive action panels show no registration drift.

Overall Impression

- A well-preserved interior action page exhibiting typical Golden Age toning but excellent structural integrity and visual clarity.
-

☑ Centerfold Observations

Marge's Little Lulu Vol. 1 No. 57 – March 1953



Observations

- **Photo validation:** The centerfold image is clear, fully visible, and provides complete edge-to-edge coverage suitable for evaluation.
- Two interior pages form a continuous action sequence beginning with a large explosive sound effect **"BA-ROOM!"** rendered in bold, jagged lettering with lightning motifs.
- Left-page upper panels depict a domestic scene, followed by characters reacting to a loud explosion. One character stands near a sofa while another runs outside toward the source of the sound.
- Mid-page panels show a character searching around a corner of a house, with shrubs, a window, and the exterior wall illustrated in simple line and color fields.
- Lower panels continue the search narrative with urgency, including a scene where the child character runs toward the right edge with motion lines behind the feet.
- Right page opens with a chaotic multi-character scene: several children digging through a heap of debris, calling out instructions, and showing varying postures indicating frenzied activity.
- Subsequent panels show adult supervision confronting the children, including dialogue referencing an explosion and searching for another child.
- Additional panels show a residential setting with porch columns, siding lines, and shrubs.
- Sound effects such as **"THUNDER!"** and another **"BA-ROOM!"** appear prominently in mid-page panels.
- The final lower-right panel shows two characters walking away in outdoor clothing as another child calls after them; background elements include grass, a walkway, and a picket-style fence segment.

Condition – Paper

- Paper exhibits uniform tan oxidation across both pages, typical for Golden Age newsprint.
- Slightly darker toning appears along the centerfold gutter and the outer margins.
- No tears, chips, moisture ripples, or stains visible.
- The centerfold remains firmly attached with no pulling, splitting, or staple-strain evident from this angle.

Condition – Printing

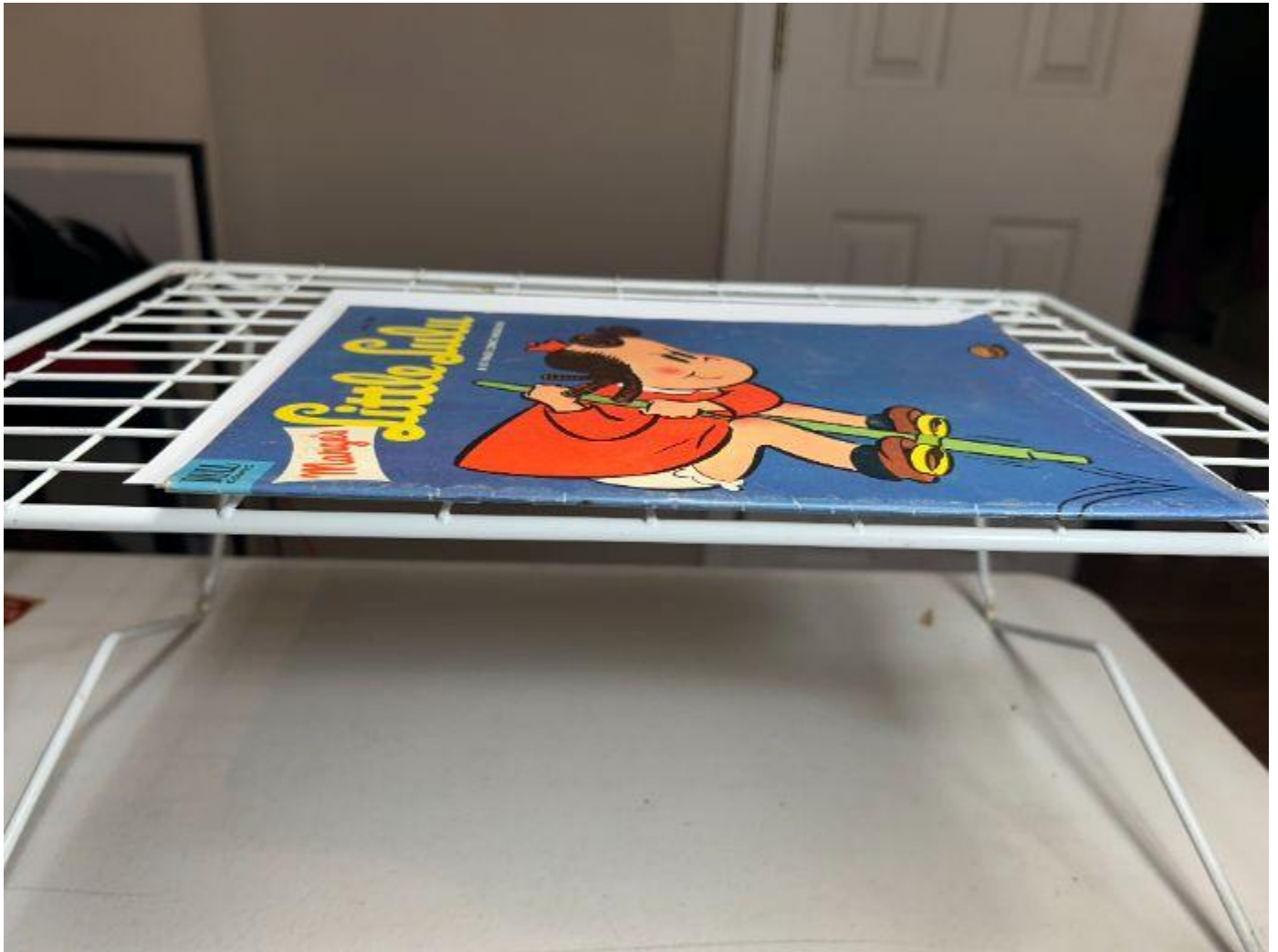
- Colors remain strong: bright reds, greens, yellows, and blues retain good saturation.
- Black outlines and lettering are clean with no noticeable registration shift.
- No ink smudging, offsetting, or fading within panels.
- Sound-effect lettering remains sharp and fully intact.

Overall Impression

A clean, structurally stable centerfold with vivid color, strong panel clarity, and only natural age toning. No structural or moisture defects observed.

Spine Observations

Marge's Little Lulu Vol. 1 No. 57 – March 1953



Observations

- **Photo validation:** The spine-angle image is clear, properly framed, and provides full visibility of the spine edge, cover alignment, and book curvature suitable for evaluation.
- The comic rests on a white wire rack, photographed from a low, side-profile angle, which clearly shows the spine line running horizontally along the left edge of the cover.
- A **moderate spine roll** is visible, causing the front cover to arc slightly upward from the page block.
- The spine fold exhibits **multiple color-breaking stress lines**, especially near the top third.
- Light **abrasion** is visible along the fold, revealing lighter paper fibers beneath the printed surface.
- The spine surface appears structurally intact with **no visible splitting** along the fold from this perspective.
- Both spine ends show mild softening; the **top spine corner** displays slight rounding, while the **bottom corner** shows slightly more compression.
- The wire rack's geometry also makes the slight warping of the cover surface visible, but this appears to be natural aging-related waviness, not moisture damage.

Overall Impression

A structurally sound spine with noticeable roll, visible stress lines, and surface abrasion typical of mid-grade Golden Age comics. No spine splits or major structural defects identified.

Staples.

Provide your feedback on BizChat

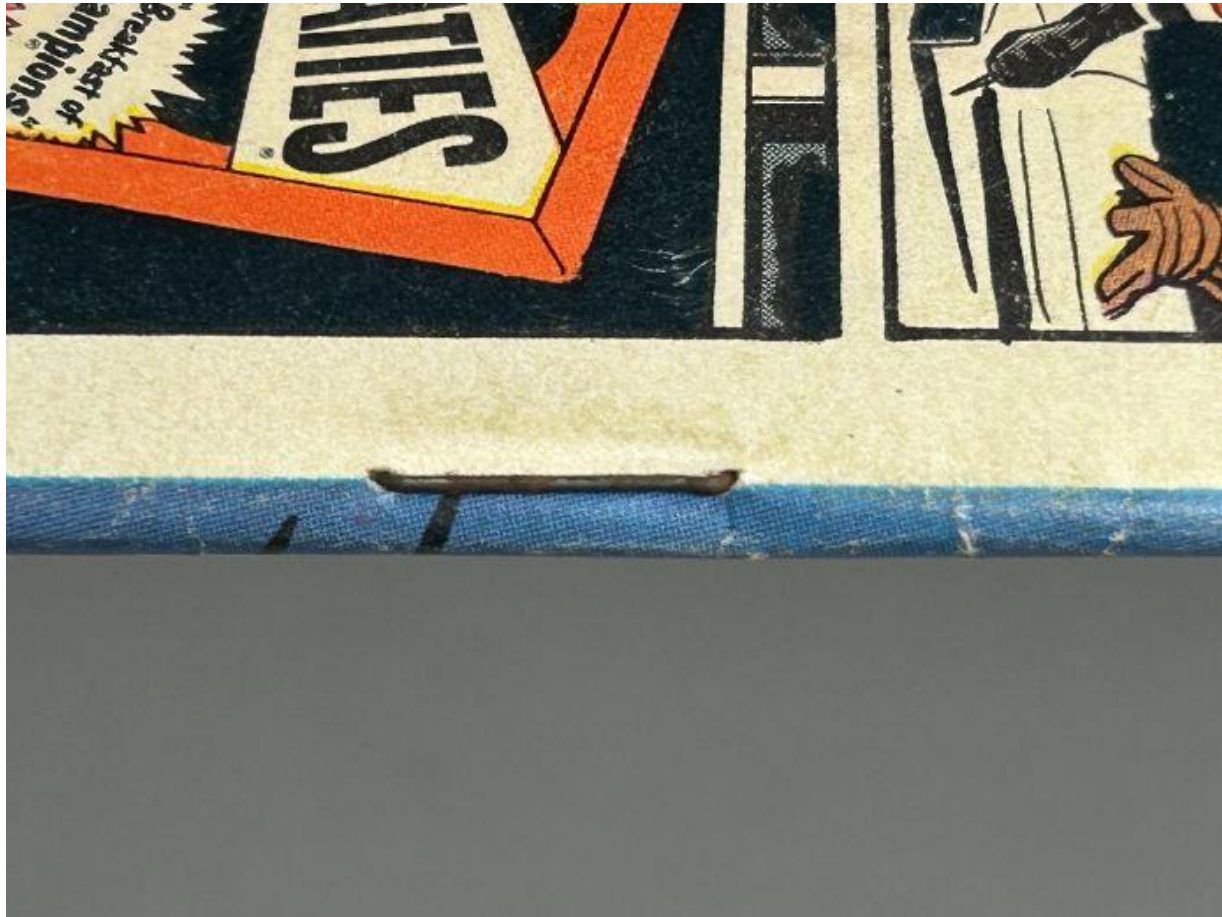
Staples Observations

Marge's Little Lulu Vol. 1 No. 57 – March 1953

Observations

Photo validation: Both staple-area images are clear, close-range, well-focused, and show the full metal staple along with surrounding cover paper—suitable for accurate evaluation.

Upper Staple Area



- The staple is fully visible and lies flat against the cover surface.
 - The metal shows **darkening/oxidation**, suggesting age-consistent surface rust (not active or flaking).
 - The surrounding paper exhibits a **horizontal stress indentation** where the staple leg presses into the cover.
 - There is a **paper color change / mild stain** directly above the staple line—light brownish discoloration likely from staple aging.
 - Minor **abrasion and fiber disturbance** appear along the spine edge near the staple, with subtle color breaks in the blue ink.
 - No tearing, splits, or staple pull-through are visible.
-

Lower Staple Area



- The staple metal shows **similar oxidation**, matching the upper staple in condition and coloration.
 - A light **linear discoloration** exists above the staple, consistent with mild rust migration or prolonged pressure.
 - The spine fold shows **multiple small stress marks** within the blue cover field, but none extend into a tear.
 - Paper fibers immediately around the staple hole remain intact—no separation, elevation, or widening around the entry points.
 - No lifting of the staple legs or misalignment is visible.
-

Overall Impression

Both staples remain **secure, original, and properly seated**.

Surface oxidation is moderate but stable, with **no structural damage**, no tearing, and no cover detachment.

Surrounding paper shows light wear and pressure staining consistent with mid-grade Golden Age condition.

Brittleness Test Observations

Marge's Little Lulu Vol. 1 No. 57 – March 1953



Observations

- **Photo validation:** The image is clear, close-range, and shows the page corner being flexed with full visibility of paper fibers—suitable for brittleness evaluation.
- The page corner bends in a **smooth, controlled arc** with no sharp cracking or abrupt folding.
- The paper surface shows **heavy uniform oxidation**, presenting as deep tan coloration typical of aged Golden Age newsprint.
- Along the bend line, there is **no evidence of fiber splitting**, micro-fracturing, or flaking.
- The edge of the page remains smooth; no **crumbing, powdering, or flake-shedding** is visible.
- The page does not exhibit stiffness associated with brittle paper; it flexes under fingertip pressure and shows **elastic recovery** when released.
- No creases formed during the lift that suggest structural weakening.

Overall Impression

The paper shows advanced aging but **remains flexible and not brittle**. Structural fiber integrity is intact, and the page responds normally to handling for a Golden Age comic in mid-grade condition.