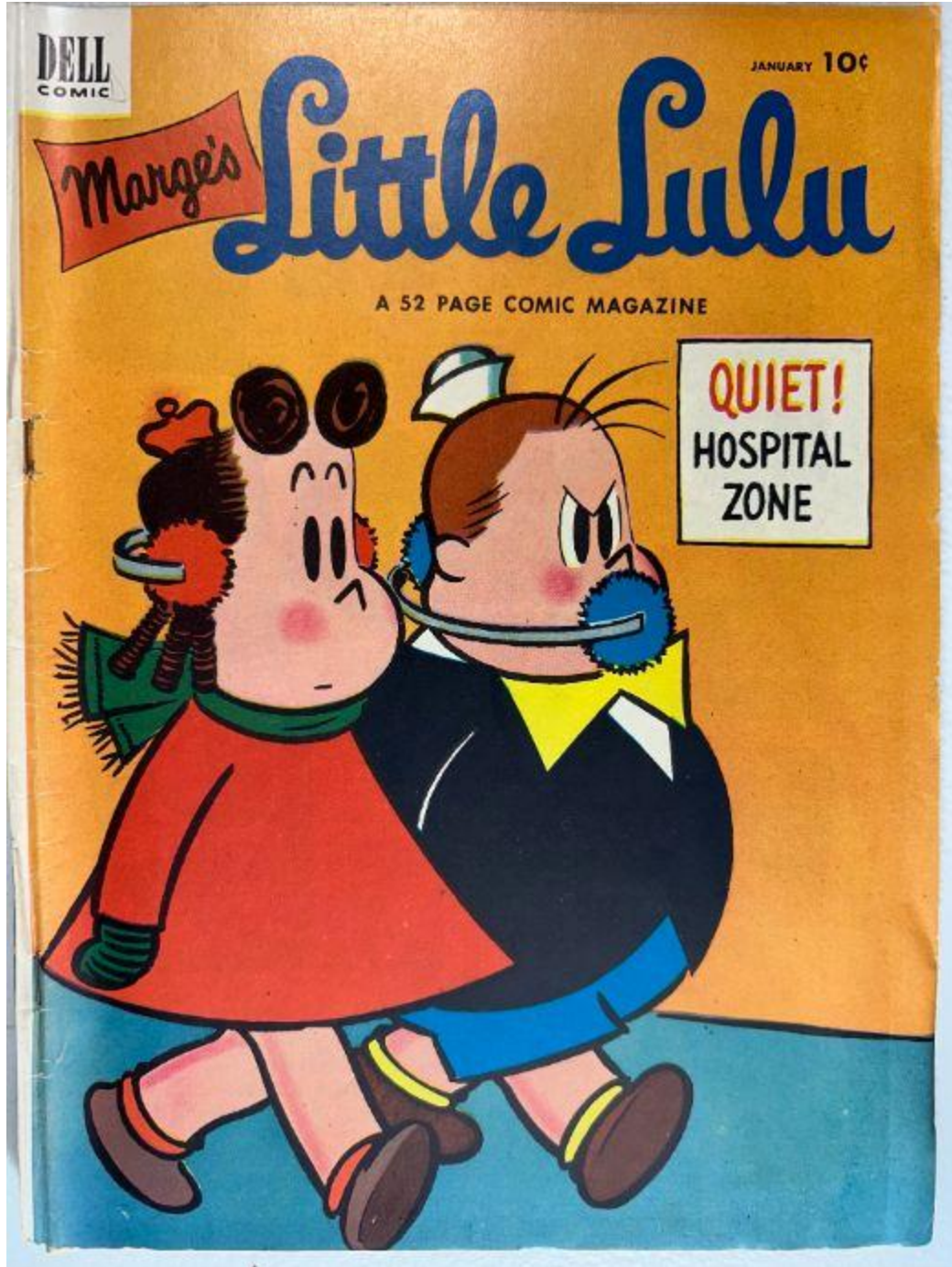


Marge's Little Lulu Vol. 1 No. 55 — January 1953

Front Cover Observations



Overall Composition & Scene

- The cover depicts two illustrated figures walking side-by-side against a flat orange background, creating a simple, high-contrast composition.
- A rectangular sign reading **"QUIET! HOSPITAL ZONE"** is positioned mid-right, integrated into the scene.
- The arrangement forms a left-to-right directional flow, suggesting movement across the page.

Foreground Elements

- One figure wears earmuffs, a scarf, gloves, and a red dress with green trim, with shoes that feature darker soles.
- The adjacent figure has a rounded torso shape, a collar with yellow and white details, blue pants, and shoes with lighter soles.
- Both figures have rounded facial features with minimal shading, consistent with mid-century cartoon styling.

Printed Text & Branding

- The masthead reads **"Marge's Little Lulu"** in bold, dark blue lettering, with a red banner containing the stylized name "Marge's."
- The upper corner contains the Dell publisher logo.
- The month and price **"JANUARY 10¢"** appear in the upper right.
- Beneath the title, the line **"A 52 PAGE COMIC MAGAZINE"** is printed in small black lettering.

Condition – Surface

- The orange background shows minor speckling and scattered tiny marks typical of aged Golden Age covers.
- Small vertical stress lines appear near the spine region.
- No moisture staining, ink transfer, or discoloration is visible.

Condition – Edges & Corners

- Spine-side edge shows several light abrasions and small paper lifts.
- Lower right corner is slightly rounded.
- Top right corner shows subtle compression.

Condition – Spine

- Visible spine wear includes multiple stress marks and small areas of color loss.

- The staple line is intact with no visible splitting from this angle.

Overall Impression

- A bright and visually crisp front cover with strong color retention.
- Wear is consistent with moderate handling, with typical Golden Age spine stress and minor corner rounding.

Marge's Little Lulu Vol. 1 No. 55 — January 1953

Inside Front Cover Observations

Marge's Little Lulu Vol. 1 No. 55 — January 1953

Advertisement for Peter Pan merchandise featuring various books, puzzles, and games with prices:

- 98¢
- 25¢
- 25¢
- 25¢
- 25¢
- 25¢
- 50¢
- 25¢
- 79¢
- 49¢
- 49¢
- 29¢ ea.

WALT DISNEY'S
Peter Pan
AVAILABLE AT STORES EVERYWHERE!

Copyright, 1952
WALT DISNEY
PRODUCTIONS
All rights reserved.

Higher price is some
times due to greater
weight used.

All those wonderful characters from Walt Disney's *Peter Pan* movie are yours to play with, to read about, to color and paint. You'll have ever so much fun enjoying the adventures in the many ways that Whitman offers them. For instance, those two big coloring books jam-packed with pictures . . . the two story books, one with full-color pictures on every page, the other a jumbo book with 192 pages and 48,000 words . . . the punch-out book with characters that you may put together yourself . . . picture puzzles galore, some in frame trays, and others come six in a box . . . sewing cards complete with cord laces . . . statuettes of eleven Peter Pan movie characters, each with plastic stand-up base . . . and a fun book filled with "things to do," like games, puzzles, dot-to-dot and more! You'll find Whitman's Peter Pan fun at stores everywhere.

By Whitman Publishing Company, world's largest publisher of children's books

Overall Layout & Structure

- The inside front cover features a full-page promotional advertisement printed over a saturated yellow background, showcasing a variety of illustrated **Peter Pan**-themed merchandise.
- The layout is highly symmetrical, using a central anchor image surrounded by a ring of smaller product illustrations arranged in a loosely circular pattern.

Primary Visual Elements

- A central illustrated figure dressed in green clothing holds a large blue sign promoting **“Walt Disney’s Peter Pan”** merchandise.
- Surrounding this figure are multiple product images including books, puzzles, card sets, coloring books, and activity items, each positioned at various angles for visual dynamism.
- Several items include price labels (e.g., **25¢, 29¢, 49¢, 50¢**) printed directly beneath or adjacent to the illustrations.

Printed Text Content

- The central sign contains the text **“Eleven fun-packed ways to enjoy Walt Disney’s Peter Pan”** along with additional availability and publication information.
- Small print near the bottom identifies copyright details and Whitman Publishing information.
- A paragraph of descriptive promotional text occupies the lower portion of the page, discussing the variety of merchandise offered and emphasizing collectibility.

Condition – Surface

- Color saturation is strong, with no visible fading across the yellow background.
- Surface appears smooth with no apparent scuffing, abrasion, or ink disruption.
- No signs of foxing, staining, moisture rippling, or discoloration are visible.

Condition – Edges & Corners

- Minor corner rounding is present at the lower right corner.
- The outer edge shows light handling wear but no cuts, nicks, or tears.
- Inner spine edge is clean, with no separation or splitting visible.

Condition – Printing

- Printed elements appear sharply registered with no misalignment of color layers.
- Text blocks remain crisp with no smearing or fading.
- Black linework retains uniform density throughout.

Overall Impression

- A vibrant, well-preserved inside front cover with excellent print clarity and stable paper condition.
- Aging is minimal and evenly distributed, contributing to a clean and highly collectible presentation.

Centerfold Observations

Marge's Little Lulu Vol. 1 No. 55 — January 1953



Overall Layout & Structure

- Two full interior pages form a continuous centerfold printed in full color using Dell's standard four-color process.
 - Panels are arranged in a vertical sequence on each page, separated by clean, even gutters.
 - The left and right pages depict two related sequences that transition smoothly through character movement and scene changes.
-

Left Page Details

Scene & Panel Content

- The top panels show characters walking through an entryway and reacting to activity outside.
- Subsequent panels show rapid motion, including a slipping or falling action near a vehicle.
- Mid-page panels depict the character retreating to a sidewalk area.
- Lower panels continue the scene with movement toward a bus stop sign while carrying a small container.

Background Elements

- Architectural features include brick walls, doorframes, windows, and sidewalks.
- A vehicle is visible near the action area with wheels, fenders, and door panels.
- A "BUS STOP" sign is mounted on a narrow pole embedded in the ground.

Condition – Paper & Printing

- Paper exhibits uniform light oxidation typical of aging Golden Age newsprint.
 - Colors remain stable with no noticeable ink drift.
 - No tears, stains, chips, or writing are visible on the page surface.
 - Linework in speech balloons and panel borders remains sharp.
-

Right Page Details

Scene & Panel Content

- The upper panels depict a character gathering water from a sink area and carrying it outdoors.
- A panel features a wooden barrier printed with **“NO GIRLS ALLOWED”** as part of the story setting.
- Mid-page panels show a group of characters in a semicircle discussing the approaching figure.
- Lower panels portray dialogue exchanges and reactive gestures among the characters.

Background Elements

- Indoor panels include furniture such as chairs, tables, and a sink with faucet and plumbing structure.
- Outdoor panels feature grass, trees, and a simple fence or barrier structure.
- Transitional panels show pathways, thresholds, and interior doorframes.

Condition – Paper & Printing

- Oxidation is consistent with the left page, presenting as light cream aging with slightly darker margins.
- Color saturation remains strong in character clothing and environmental elements.
- No stains, foxing, water ripples, or paper separation are visible.
- All printed text and outlines appear clean and well-registered.

Overall Impression

- A clean and well-preserved centerfold with solid color retention and evenly aged paper.
 - The artwork, panel structures, and narrative elements are fully intact with no structural faults.
-

☑ Back Cover Observations

Marge's Little Lulu Vol. 1 No. 55 — January 1953



Overall Layout & Scene

- The back cover is a full-page, comic-style Wheaties advertisement arranged in a multi-panel narrative sequence featuring athletic action, locker-room dialogue, and promotional messaging.
 - The layout consists of a large top banner, several rectangular panels positioned in cinematic progression, and a broad promotional block along the lower section.
-

Primary Visual Elements

- The top banner features the bold headline **“TOUCHDOWN! Doak Walker Sparks for Lions!”** set against a jagged yellow background with red lettering.
 - The top panel displays a football pile-up scene with players converging on the ball, with figures positioned in overlapping layers to emphasize impact.
 - Mid-page panels show interior spaces such as a morning kitchen scene and a locker room discussion, as well as on-field football action.
 - Lower-page panels depict a climactic football play as a player dives across the goal line while defenders attempt to halt progress.
-

Printed Headline Text

- A large main title spans the top: **“TOUCHDOWN!”** followed by the subtitle **“Doak Walker Sparks for Lions!”**
 - Dialogue balloons within the panels narrate preparation, practice, and game-time action.
 - The lower promotional block includes **“What Sparks a Champion Sparks You!”** alongside a Wheaties logo.
-

Promotional & Narrative Content

- The advertisement follows a sequence describing a professional football player's training, morning routine, and in-game performance.
 - The panels reference “secret plays,” on-field strategy, and the importance of breakfast as part of the promotional tie-in.
 - The final panel integrates an endorsement message linking the cereal product to athletic success.
-

Color & Printing

- Color saturation remains strong, particularly in reds of the uniforms, blues of the helmets, and yellows in headline blocks.
 - Registration of the four-color printing process is consistent, with no noticeable misalignment of line art or color layers.
 - Shading and halftone textures appear crisp across all scenes.
-

Condition – Surface

- Surface is clean with moderate gloss visible across the full page.
 - Light micro-scuffing is present but does not disrupt printed detail.
 - No stains, foxing, water ripples, or discoloration are visible.
-

Condition – Edges & Corners

- Upper corners show mild rounding typical of handling wear.
 - Outer edge exhibits light abrasion with no significant nicks or paper loss.
 - Lower edge shows minimal wear and no creasing.
-

Condition – Spine Side

- Spine-side margin displays light rubbing and small areas of color loss.
 - The paper remains intact with no visible splits or tears extending from the fold.
 - The alignment of the cover to the spine appears slightly flexed but structurally stable.
-

Overall Impression

- A bright, well-preserved back cover with vivid colors and fully intact artwork.
 - Minor wear is present along the edges and spine margin, but the page remains structurally sound and highly readable.
-

☑ Spine Observations

Marge's Little Lulu Vol. 1 No. 55 — January 1953



Overall Setting & Angle

- The comic is positioned horizontally on a white wire rack, photographed from a low side angle that exposes the spine profile and its alignment relative to the covers.
-

Spine Shape & Alignment

- The spine exhibits a **noticeable roll**, leaning toward the back cover.
 - The page block and front cover do not sit in a perfectly vertical plane, indicating moderate reading and handling wear.
 - The roll appears consistent along the entire visible length of the spine.
-

Spine Surface Condition

- Multiple areas of **color loss** and abrasion are visible along the spine's printed surface.
 - Small breaks in the ink layer reveal lighter underlying fibers.
 - Printed imagery along the spine shows interruptions due to wear at several points.
-

Spine Corners

- The top spine corner shows light rounding with minor wear.
 - The bottom spine corner appears slightly compressed but remains intact with no missing material.
-

Staple Regions

- The staple areas are partially visible from this angle, showing minor surface distortion but no severe tearing along the fold.
 - The spine covering remains continuous, with no visible open splits extending from either staple.
-

Overall Impression

- A moderately worn spine with clear roll, visible abrasion, and color loss, but structurally intact without signs of splitting.
-

☑ Staples Observations

Marge's Little Lulu Vol. 1 No. 55 — January 1953

Upper Staple Area



-
- The upper staple area shows a **significant horizontal tear** extending outward from the staple's seating point, exposing lighter interior paper fibers.
 - Portions of the cover stock surrounding the staple are **lifted and frayed**, creating an irregular opening along the spine fold.
 - The staple itself is partially visible and appears slightly recessed into the cavity created by the torn paper.
 - Ink loss is present around the damaged region, with the surrounding orange surface showing **broken color** and thinning of the printed layer.
 - The fold line exhibits **stress cracking**, with multiple micro-fissures radiating outward from the staple opening.

Lower Staple Area



- The lower staple is **fully visible and firmly seated**, lying flat against the cover surface.
- The paper surrounding the staple shows **light abrasion** and slight color loss but no severe tearing.
- Two short, diagonal **stress lines** extend from the staple ends into the cover stock.
- The fold line beneath the staple shows mild compression and minor surface creasing without material separation.
- No rust migration or staining is visible from this angle.

Overall Impression

- The upper staple region exhibits **meaningful structural damage** with tearing and exposed fibers.
- The lower staple remains intact with minor stress cracking and light abrasion.

Brittleness Test Observations

Marge's Little Lulu Vol. 1 No. 55 — January 1953



Page Flex & Structure

- The lifted outer corner forms a smooth curved arc when raised, indicating controlled flexibility without abrupt folding.
 - The bent portion shows no cracking, splitting, or separation of surface fibers along the fold line.
 - The paper layers maintain structural continuity with no signs of fracture at the lifted edge.
-

Paper Surface & Tone

- The sheet displays uniform cream-toned aging typical of mid-century newsprint.
 - The surface remains dry but stable, showing no powdering or granular shedding when flexed.
 - Oxidation is consistent across both the lifted page and the underlying sheet.
-

Edge Behavior

- The corner lifts cleanly with no micro-tears or splintering visible along the stressed edge.
 - The lower margin remains flat and intact, with no cracks emerging during manipulation.
 - The edge contour remains smooth without fraying.
-

Mechanical Response

- The page bends with moderate resistance appropriate for its age, returning toward its original position when released.
 - The sheet shows controlled stiffness but no signs of brittleness, snapping, or audible fiber break.
 - The overall flex response indicates preserved internal fiber cohesion.
-

Overall Impression

- The page demonstrates stable flexibility and does **not** exhibit brittleness.
 - Aging is present but not structurally compromising, with no cracking, tearing, or fiber failure detected.
-

☑ Inside Pages Observations

Marge's Little Lulu Vol. 1 No. 55 — January 1953

Inside Page Set 1 — "The Fortuneteller" Story Page



☑ Indicia & Publishing Information (First Interior Page)

Marge's Little Lulu Vol. 1 No. 55 — January 1953

Comic Title as Printed on First Interior Page

- **"Marge's Little Lulu – The Fortuneteller"** appears as the interior story title at the top of the first story page.

Indicia Information (Bottom of First Interior Page)

- **"MARGE'S LITTLE LULU, Vol. 1, No. 55, Jan.–Mar. 1953."**
- **Published by Dell Publishing Co., Inc., 261 Fifth Ave., New York 16, N.Y.**
- A standard Dell indicia block includes:
 - Copyright notice
 - Printing location
 - Subscription rates
 - Address-change instructions
 - Postal regulations statement

Overall Impression

- The indicia block is fully present and clearly printed along the bottom margin of the first interior page, matching Dell's standard 1950s formatting.

Please continue with the next step when ready.

Scene & Panel Content

- Panels show characters walking outdoors, discussing visiting a sick individual, and gathering items such as flowers.
- Middle panels show a transition into a wooded or grassy area with trees and fence structures.
- Lower panels depict a humorous situation involving a kite and a misinterpretation of an object hidden in a tree.
- Characters speak through balloons that include dialogue reflecting planning, confusion, or discovery.

Background Elements

- Outdoor backgrounds include fences, grassy ground, bushes, and simple tree forms rendered in characteristic Dell style.
- Indoor backgrounds show minimal interior furniture and plain wall structures.
- A sidewalk scene appears with a brick building edge, windows, and ground shadows.

Condition – Paper

- Paper exhibits noticeable cream-tan oxidation across the entire sheet.
- Margins show slightly darker toning, especially along the top and outer edges.
- No tears, chips, stains, or writing appear on the page.
- Corners remain intact with mild rounding.

Condition – Printing

- Colors remain stable, with clear reds, blues, yellows, and greens.
- Black linework remains sharp with no misregistration.
- Speech balloons retain full clarity without ink spread or fading.

Overall Impression

- A clean and fully intact first interior page with stable color, uniform aging, and no structural defects.
-

Inside Page Set 2 — Second Story Page



Scene & Panel Content

- Upper panels show two characters walking along a sidewalk, engaged in conversation involving suspicion or questioning.
- Mid-page action includes a door collision and reactions in adjoining panels.
- Lower panels transition into a kitchen interior with a seated adult figure and a table.
- The final panels show preparation involving an egg and reenactment of an earlier event.

Background Elements

- Exterior scenes include simplified tree shapes, snow-free ground, fences, and brick building edges.
- Interior kitchen scenes include a table, chairs, patterned floor, and plain wall backdrop.
- Windows and doorframes appear with minimal decorative detail.

Condition – Paper

- Moderate oxidation consistent with other pages, producing a tan background tone.
- No tears, stains, or chips detected.
- Gutter margin shows slight darkening but no separation.

Condition – Printing

- Color overlays remain well-aligned and vivid.
- Panel borders are solid with no breaks.
- Dialogue text remains crisp and readable.

Overall Impression

- A fully intact page with strong printing quality and light, even aging.
-

Inside Page Set 3 — "Tubby" Story Page



DEL
With sec
we'll
Members
CLUB, o
ph

M

DELL
Please
Include
CLUB
SUBSCR
 2 year
I am and
Name
St. and
City
CANADA
FOR AD

Scene & Panel Content

- Panels depict an outdoor winter setting with multiple figures discussing Christmas gifts.
- A sequence features characters comparing presents, represented by small props such as a baseball mitt or boxing gloves.
- The central large panel displays the sound-effect **“BOOM!”** within a cloud-shaped graphic.
- Lower panels revisit the earlier conversation with humorous exaggeration regarding guessed gifts.

Background Elements

- Numerous trees with simplified trunks and branching.
- Ground remains bare, light-colored, with no snow accumulation.
- Minimal architectural elements appear, focusing on outdoor wooded surroundings.

Condition – Paper

- Oxidation creates darker toning near outer margins.
- Page surface is smooth with no visible abrasions.
- No writing, stains, tears, or chips detected.

Condition – Printing

- Colors remain stable including reds, greens, and yellows.
- Halftone screen patterns appear intact.
- The **“BOOM!”** graphic displays bright blue with clear starburst accents.

Overall Impression

- A well-preserved interior humor page with strong visual clarity and consistent aging.
-

Inside Page Set 4 — **“That Witch Hazel Again”** Story Page

Scene & Panel Content

- Panels show characters reacting to persistent knocking and noise outside a home.
- Middle panels include indoor confrontation and emotional dialogue involving distress or misunderstanding.
- Lower panels show a character leaving home and speaking with another near an exterior doorway.

Background Elements

- Interior settings include a living room with a chair, table, window, and patterned flooring.
- Exterior backgrounds show a fence, yard, pathway, and exterior doorway.
- Door surfaces include visible hinges and frame details.

Condition – Paper

- Toning consistent with previous pages, presenting a light-tan hue.
- Margins show slightly deeper oxidation.
- No visible tears, stains, or chips.

Condition – Printing

- Color saturation remains strong, particularly in reds and greens.
- Black outlines stay clean and consistent.
- Speech balloons show no smearing or ink lifts.

Overall Impression

- A stable, clean interior story page with no notable defects beyond typical age toning.
-

Inside Page Set 5 — Later Interior Story Page

Scene & Panel Content

- Upper panels depict indoor and outdoor movement involving a character retrieving water and discovering altered containers.
- Mid-panels show a group questioning the condition of buckets or pails.
- Lower panels include group dialogue and an exterior hose or watering scene.

Background Elements

- Indoor scenes show sinks, counters, windows, and wall structures.
- Exterior backgrounds include grass fields, bushes, fences, and a hose with flowing water.
- Trees appear with minimal shading, consistent with Dell's simplified style.

Condition – Paper

- Oxidation is uniform with slightly darker edges.
- No structural defects such as tears, splits, or stains.
- Edges remain intact with minor corner rounding.

Condition – Printing

- Color fields retain vibrancy, particularly greens and blues.
- Registration remains precise with no color overlap.
- Linework and lettering remain sharp.

Overall Impression

- A clean and evenly aged interior page with strong printing and preserved structure.