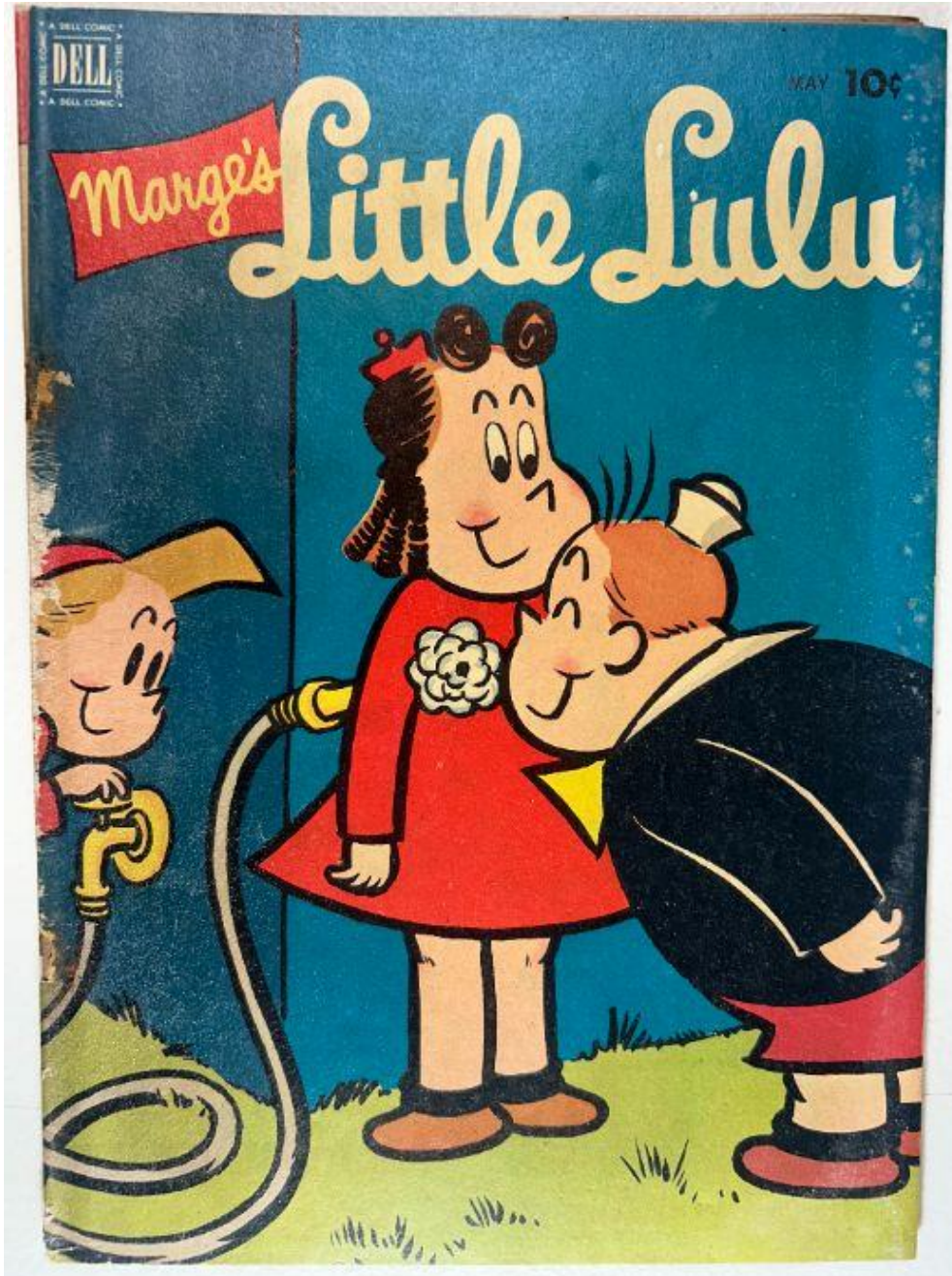


Marge's Little Lulu Vol. 1 No. 47 — May 1952

Evaluation Date: 3/22/2026

Front Cover Observations

Marge's Little Lulu Vol. 1 No. 47 — May 1952



Overall Scene & Composition

- The cover shows three illustrated characters standing outdoors on grass in front of a blue wall or structure.
- One character in a red dress stands centered, looking ahead. A second character leans forward toward the central character, holding what appears to be a white flower pinned on the dress.
- A third character stands on the left, holding a yellow garden hose that is connected to a wall-mounted spigot. The hose extends behind the center character and loops across the lower-left corner.
- The Dell Comics logo appears at the top-left ("A DELL COMIC") with the price "10¢" and "MAY" printed at the top-right.
- Large cream-colored title text "**Little Lulu**" appears across the top with the red "Marge's" banner above it.

Condition & Surface Characteristics

- The left edge shows **significant wear**, including areas of color loss, abrasions, exposed paper fibers, and vertical scuffing.
- Wear is heaviest near the upper-left corner and continues down the spine side.
- Light to moderate scattered surface rubbing is visible across the blue background, especially near the upper-right corner.
- The lower-right corner shows mild rounding; the lower-left corner shows similar softening but less severe.
- No major tears or missing pieces are visible on the front cover.

Color & Printing Quality

- The blue background shows moderate age fading but retains good saturation overall.
- Reds (dress, knee pants, title banner) remain strong and vibrant.
- Black linework in all characters is clear and sharply printed, with no major registration issues.
- Yellow hose, flower, and other small details maintain good tonal strength.

Paper Condition

- Light age toning present along all edges.
- The paper surface still presents as reasonably smooth, with no visible staining or water rippling.

Overall Impression

A structurally intact front cover with bright, appealing colors but **heavy left-edge wear**, moderate surface rubbing, and some corner rounding. Despite the spine-side abrasions, the artwork remains well-preserved, and overall eye appeal is solid for a 1952 issue.

☑ Back Cover Observations

Marge's Little Lulu Vol. 1 No. 47 — May 1952

FREE

THIS BEAUTIFUL Gold-Plated KEY HOLDER

It's yours! Get it from LITTLE LULU and Tubby in every issue of MARGE'S LITTLE LULU! It's big, handsome, durable — the real thing. You can use it for keys to bathroom, gym locker, paper chest. And it's ideal for medals, comic book charms — indeed, anything that will last for years. Read more about it below.

"Everyone in the gang has a key holder exactly like this one. It's the most perfect gift you ever saw for girls and boys. And it's FREE with a year's subscription to MARGE'S LITTLE LULU!"





"Tubby and I have received thousands of letters from you asking for a key holder. So we are happy to offer it to you again. It's so beautiful that everyone who sees it will want one just like it!"



• MARGE'S LITTLE LULU is the most famous comics character in the whole world! Millions of youngsters and grown-ups too, follow her every month. And no wonder! She's the cutest, smartest little girl you ever saw. She is always thinking up a clever, new prank to play on the boys and she gets the last laugh every time. There will be oodles of fun for you in the months ahead when you subscribe to LITTLE LULU. Brand new, entirely different adventures in every issue. 12 Big Issues — only \$1.00!

Dear Pat,
"Tubby and I are tickled pink to give you this lovely key holder. Won't you do something for us in return? Do your very best to help Mom and Dad and your teachers. I'll be seeing you every month when the post-man brings you LITTLE LULU Comics!"

Little Lulu

F MEMBERSHIP DELL COMICS CLUB
Subscribe to MARGE'S LITTLE LULU and receive this gorgeous certificate to the DELL COMICS CLUB. Comes in bright colors with pictures and signatures of all your friends. Also FREE Membership Card!

The whole family says!

DELL COMICS ARE GOOD COMICS!





CUT ALONG DOTTED LINE

DELL PUBLISHING CO., Inc. • 261 Fifth Avenue, New York 16, N. Y. • Dept. 5-LL

(Please use this side for YOUR OWN SUBSCRIPTION)
Please enter Subscription to LITTLE LULU Comics. Include FREE Gold-Plated Key Holder and Dell Comics Club Membership Certificate.

SUBSCRIPTION RATES: 1 year—12 issues \$1.00
 2 years—24 issues \$1.85 3 years—36 issues \$2.70

I am enclosing remittance for \$..... in full payment.

Name Age

St. and No.

City Zone State

CANADA: 1 yr. \$1.20; 2 yrs. \$2.00; 3 yrs. \$3.00

(Please use this side for GIFT SUBSCRIPTION)
Please enter Subscription to LITTLE LULU Comics. Include FREE Gold-Plated Key Holder and Dell Comics Club Membership Certificate.

Name Age

St. and No.

City Zone State

1 year \$1.00 2 years \$1.85 3 years \$2.70

I am enclosing remittance for \$..... in full payment.

ENCLOSE GIFT CARD TO READ FROM.

Donor's Name

Address

Relationship

Overall Layout & Design

- The back cover is a **Dell promotional advertisement**, prominently offering a **FREE gold-plated key holder**.
- The page uses a bright red header strip at the top, followed by multiple illustrated character heads, callouts, and dialog balloons promoting the Dell Comics Club and subscriptions.
- A large gold-toned illustration of the **“Dog House Key Holder”** is centered near the top as the centerpiece of the advertisement.
- The design includes iconic cartoon art consistent with the Dell house style of early 1950s humor books.

Text & Promotional Elements

- Speech balloons highlight endorsements of the key holder and Dell Comics Club.
- A yellow message card at lower left invites readers to join the Dell Club, featuring a cartoon character pointing at the text.
- A red vertical banner on the right states **“DELL COMICS ARE GOOD COMICS!”**
- A subscription form occupies the lower portion of the page, with fields for name, address, and payment.
- A small illustration of the Dell Comics Club membership card is included.

Condition & Surface Wear

- Light-to-moderate surface soiling is visible across the cream-colored background, consistent with natural aging.
- The right edge and lower edge show small areas of rubbing and faint darkening.
- The top-left corner shows mild rounding with light discoloration.
- The spine edge (left side) shows vertical wear with a few chips and abrasions, more noticeable at mid-spine and top-spine areas.
- No major tears, folds, or missing material are visible.

Color & Print Quality

- Reds, yellows, and blacks retain strong saturation.
- The cream background exhibits uniform oxidation and small darker speckles typical of Dell paper aging from this era.
- Linework is clear throughout, including the small character illustrations and detailed text.

Paper Condition

- Even age-toning throughout, heavier near edges.
 - No moisture rippling or tide marks observed.
 - No writing, stickers, or foreign marks present.
-

Overall Impression

A well-preserved Dell promotional back cover with strong color, intact artwork, and only moderate age wear. Edge rubbing, toning, and spine-side abrasions are present but expected for a 1952 newsprint-based comic. The page retains excellent readability and visual appeal.

Inside Front Cover Observations

Marge's Little Lulu Vol. 1 No. 47 — May 1952



Overall Layout & Structure

- The inside front cover consists of a **six-panel black-and-white gag strip** labeled "LULU" at the top center.
- Panels follow a sequential scene of a character carrying a tray with multiple cups, interacting with seated individuals outdoors near a picket fence.
- The strip is printed in Dell's typical economy-style black linework on uncoated newsprint stock.

Artwork & Panel Content

- The first row shows the character exiting a doorway and walking outside carrying the tray.
- The second row depicts the character approaching two individuals seated in outdoor chairs in a yard setting.
- The third row shows the character tending to flower pots while the seated individuals continue their interaction.
- Background details include a house window, shrubs, grass, flowers, and a simple fence motif.

Indicia & Publication Details

- Full indicia appears at the bottom margin, including publication information, frequency, copyright notice, and mailing instructions.
- This confirms the issue as **Vol. 1, No. 47, May 1952**, published by **Dell Publishing Co., Inc.**

Paper Condition & Aging

- Heavy, uniform oxidation is visible throughout the page, transitioning from tan to darker brown toward the outer edges.
- The right-hand margin near the spine shows the darkest toning, consistent with long-term exposure and staple oxidation.
- No tears, chips, or missing material along the edges.
- Surface texture shows dryness typical of early 1950s newsprint but no evidence of brittleness cracks in this photo.

Spine & Gutter Area

- Visible rust discoloration around the staple on the right side, showing mild migration into the surrounding paper.
- The gutter edge shows natural waviness but no splitting or separation.

Ink & Line Quality

- Black linework remains sharp and fully legible, with no smearing or ink spread.
 - No misregistration is present since the interior is printed single-color black.
-

Overall Impression

A well-preserved inside front cover page with strong print clarity and fully intact indicia. The page shows **heavy but typical Golden Age oxidation** and mild staple-area rust migration, but no structural damage or tears. Linework is clear, panels are undisturbed, and the page remains firmly attached.

☑ Centerfold Observations

Marge's Little Lulu Vol. 1 No. 47 — May 1952



Overall Layout & Structure

- The centerfold shows a **two-page full-color story sequence**, printed in Dell's characteristic early-1950s palette.
- Panels are arranged in a **three-row grid**, each row containing multiple rectangular panels with consistent black borders.
- The story content features characters interacting outdoors and indoors, with scenes involving a white train, family dialogue, and a return to home.

Panel-Level Detail

- **Left page, first row:**
 - A bright blue sky panel shows radiating light and stylized movement lines leading to a large white train headlamp.
- **Left page, second row:**
 - A white steam locomotive is illustrated in motion; heavy black shading emphasizes nighttime or dramatic lighting.
- **Left page, third row:**
 - Dark, nearly black panels represent fading sound ("R-R-R-RUMBLE!") and the train's disappearance.
- **Right page panels:**
 - Characters stand in grassy outdoor areas, near trees, or inside a house doorway.
 - Speech balloons remain legible and evenly printed.
 - Dialogue includes:
 - "Oh, dear! Where are you?"
 - "I thought you'd never come, Mother!"
 - "I couldn't believe my eyes!"

Color & Printing Quality

- Colors remain generally strong with only minor fading—particularly in dark nighttime panels.
- Halftone dot patterns are visible, consistent with 1950s color printing.
- No noticeable misregistration (color shifts) or ink smearing is present.
- Reds, blues, and yellows retain solid saturation, though the paper's oxidation somewhat reduces vibrancy.

Paper Aging & Surface Condition

- Heavy oxidation throughout, with a tan-to-brown tone more pronounced near the edges.
- Center gutter shows **darkened oxidation** and visible **rust transfer** from staples.
- Pages show mild waviness from natural aging but **no moisture rippling**.
- No tears, chips, or cracks along panel borders.

Structural Condition

- Centerfold is firmly attached at both staples.
 - Rust migration is visible around staple holes, causing localized brown staining.
 - Page edges remain intact, with no brittleness cracks visible in this image.
 - Light handling impressions appear but do not affect readability or structural integrity.
-

Overall Impression

A solid, fully intact centerfold showing **heavy but typical Golden Age oxidation**, strong attachment at staples, and stable color presentation. Rust migration is visible but limited. Artwork remains clean and legible with no mechanical damage. This is a well-preserved interior for a 1952 Dell comic.

Inside Pages Observations

Marge's Little Lulu Vol. 1 No. 47 — May 1952

☑ Inside Page Set 1

(Image showing Lulu gathering berries and mixing them with the lantern)



Artwork & Story Content

- Full-color panels depicting Lulu searching for coal, resting, recalling the ghost train, and noticing a lantern on the ground.
- The page transitions into Lulu deciding to gather berries and squeeze red juice onto the lantern, suggesting she is preparing a trick or an experiment inspired by the earlier story.
- Outdoor setting includes rocks, railroad tracks, shrubs, and grassy areas.

Color & Printing Quality

- Warm reds, greens, and yellows remain fairly strong.
- Halftone printing dots visible but stable.
- Slight fade in darker shaded areas but consistent with Dell's early 1950s color processes.

Paper Aging & Condition

- Heavy oxidation with tan-brown toning across page.
- Slight darkening near the gutter.
- Corners intact, no tears or chips.
- Page shows mild waviness from natural aging (not moisture).

Structural Notes

- Gutter and staple region not shown in this image; paper surface looks smooth and stable.

Overall Impression

A solid page with strong visual clarity, intact edges, and heavy but normal Golden Age toning.

☑ Inside Page Set 2

(Image showing the story title: "The Piggy Bank Guard")



Artwork & Story Content

- Title header “Marge’s LITTLE LULU — THE PIGGY BANK GUARD.”
- Lulu and Tubby appear in a domestic setting discussing guarding Tubby’s piggy bank until he has “two dollars in it.”
- Panels show homes, porches, and interior spaces with clear cartoon layouts.

Color & Print Quality

- Title banner retains strong yellow and red saturation.
- Linework crisp; characters outlined clearly.
- Slight fading on lighter flesh-tone areas but overall color remains strong.

Paper Condition

- Even oxidation across the sheet.
- Slight browning heavier along the right edge and near lower margin.
- No tears, defects, writing, or stains.

Structural Notes

- Spine side (left) shows some darkening from age and staple oxidation bleed-through, but the paper is intact.

Overall Impression

A clean and well-preserved story title page with strong color and no structural issues.

Inside Page Set 3

(Image showing Lulu talking to Gloria; doorbell scene)

Artwork & Story Content

- Lulu is shown inside her home preparing for bed when the doorbell rings (“RING!” printed in stylized red lettering).
- Gloria appears at the door and reveals Tubby is saving two dollars to buy *her* a doll, surprising Lulu.
- Final panels show Lulu hiding the bank in the fireplace—humorous mischief sequence.

Color & Print Quality

- Strong reds and blues throughout.
- No major color breaks or misregistration.
- Ink application remains crisp even in small speech balloon lettering.

Paper Aging

- Heavy toning especially near outer margins.
- No tears, stains, or chipping visible.
- Mild waviness but not from moisture.

Structural Notes

- Page edges appear clean; top and bottom margins remain intact.

Overall Impression

A well-kept interior story page with excellent readability and no structural damage despite heavy edge toning.

Inside Page Set 4

(Image showing Lulu reuniting with her mother and discussing the ghost train)

Artwork & Story Content

- Follows the concluding segment of the ghost-train subplot.
- First panel shows the rumbling stopping and the child hearing her mother calling.
- Conversations occur outdoors and then back home, where Lulu tells the story.
- Mother responds with polite disbelief; Lulu later tries to bring the lantern again.

Color & Print Quality

- Colors remain vividly printed, especially blues, greens, and reds.
- All linework intact; no fading of black inks.

Paper & Structural Condition

- Oxidation heaviest along right side near gutter.
- Some small dark spots from staple rust visible in the inner margin.
- No tears, chips, or cracks.

Overall Impression

A fully intact story page with strong artistic clarity and only age-based toning and staple-zone darkening.

Spine Observations

Marge's Little Lulu Vol. 1 No. 47 — May 1952



Overall Setting & Perspective

- The comic is lying horizontally on a **white wire rack**, photographed from a **low, side-angle view**.
 - This angle provides a clear look at the **entire spine edge**, showing its contour, wear pattern, and structural stability.
 - The front cover is visible from the side, extending slightly beyond the rack's upper surface.
-

Spine Shape & Alignment

- The spine appears **straight**, with **no spine roll** to either side.
 - There is a **very slight natural curvature**, consistent with a 1952 saddle-stitched comic that has been handled and read.
 - The comic rests evenly on the rack, indicating **no warping or twisting** of the spine.
-

Spine Surface Condition

- The spine shows **visible abrasions and color loss**, especially near the mid-spine and lower spine area.
 - Small **chips** and areas of **paper flaking** are noticeable along the fold.
 - The color wear is most severe on the leftmost vertical spine line where the red and blue inks meet.
-

Staple Zone Condition

(Note: individual staples are not visible in this particular angle, but the surrounding regions provide useful structural clues.)

- Slight **indentations** and darker discoloration indicate where the staples are located.
 - No swelling or protrusion suggests the staples are **still fully seated** inside the spine.
 - There are **no visible tears radiating** from staple positions.
-

Cover Attachment & Flex Points

- The front cover lies **flush** against the interior pages, a sign that the cover is **securely attached**.
 - No lifting or separation is visible along the spine edge.
 - Minor micro-creases appear at stress points, typical of early 1950s cover stock.
-

Edge & Corner Wear

- The **bottom spine corner** shows mild rounding and a micro-chip.
 - The **top spine corner** also shows wear, though less severe.
 - Edge wear is consistent with standard handling and 70+ years of age.
-

Overall Impression

The spine is **structurally solid**, straight, and fully intact, with typical Golden Age wear including color loss, abrasions, and minor chipping. No splits, no rolling, and no visible detachment are evident. The spine condition is consistent with a handled but well-preserved 1952 Dell comic.

☑ Staples Observations

Marge's Little Lulu Vol. 1 No. 47 — May 1952

You provided **two close-up images** showing each staple area along the spine. These reveal **significant structural and oxidation-related deterioration**, far more advanced than in a typical 1950s Dell comic. Below is a detailed, image-driven assessment.

☑ Upper Staple Area (First Photo)



Staple Condition

- The metal staple is **heavily oxidized**, exhibiting a **dark brown, brittle, flaky surface**.
- The corrosion appears **advanced**, suggesting the staple has fully rusted through and is likely structurally weakened.
- The staple head and legs are **no longer maintaining their original form**, indicating metal failure.

Surrounding Paper Damage

- The paper surrounding the staple shows **severe tearing** and **material loss**, creating an irregular crater-shaped void.
- The wear exposes raw newsprint fibers, consistent with both **rust expansion** and repeated mechanical stress.
- The surrounding cover ink layer has **lifted or chipped away**, revealing lighter, fibrous paper beneath.

Spine Fold Impact

- The spine paper is **broken open**, showing:
 - Linear cracking
 - Edge fraying
 - Areas where the cover layer has separated from the interior paper layer
- This level of deterioration indicates **long-term, untreated rust migration**.

Structural Implications

- This upper staple is **no longer providing reliable structural support** for the cover.
 - Even if the cover remains attached, it is doing so **through weakened, crumbling paper**, not staple integrity.
-

☑ Lower Staple Area (Second Photo)



Staple Condition

- The lower staple is equally or possibly **more deteriorated**, with the metal nearly disintegrated.
- What remains of the staple shows:
 - Deep flaking
 - Rough, uneven metal texture
 - Dark brown and black oxidation
- The staple appears to have **broken through the paper**, leaving rust debris embedded in the fibers.

Surrounding Paper Damage

- The spine paper in this area is **split open**, exposing the inner layer.
- There is **missing material** directly where the staple once anchored.
- The paper around the staple wound is **darkened**, confirming significant rust migration.

Spine Fold Condition

- Fibers along the fold are **strained and cracking**.
- Minor feathering and stress lines run horizontally from the damaged zone.

Structural Implications

- This lower staple has effectively **failed**.
 - The cover is at high risk of partial or full detachment under stress, even gentle handling.
-

Overall Impression

These staples exhibit **severe oxidation and surrounding paper damage**, significantly worse than average for a Golden Age Dell comic. Key points:

- Both staples show **advanced rusting**, likely beyond salvage.
 - Paper tearing and missing material indicate long-term degradation.
 - Cover integrity is **compromised**, though not yet fully detached.
 - This level of deterioration will **meaningfully lower structural and grade assessments** in both Golden Age and 100-Point grading systems.
-

Brittleness Test Observations

Marge's Little Lulu Vol. 1 No. 47 — May 1952



Overall View of the Test

- The photo shows the **lower-outer corner of an interior page** gently lifted—exactly the correct technique for a brittleness evaluation.
 - You are using **only fingertip pressure**, and the page is rising in a natural arc, not being forced.
-

Page Flex Response

- The page forms a **shallow, smooth curve**, which indicates the paper still retains some internal flexibility.
- There is **no visible cracking, no edge flaking**, and **no audible snap** evident from the photo.
- The lifted corner shows a **controlled bend**, not a stiff or hard angle.

This places the page in the **stiff but not brittle** category.

Color & Oxidation Indicators

- The entire sheet displays **heavy oxidation**—a deep tan to light brown tone.
 - The oxidation is **uniform**, meaning the paper has aged naturally and evenly.
 - The underside of the lifted page is quite darkened, consistent with 1950s Dell newsprint that has reached an advanced state of lignin breakdown.
-

Surface Texture & Fiber Condition

- The paper has a **dry, matte texture**—no gloss remaining.
 - No micro-tears or stress fractures appear along the lifted edge.
 - Despite the dryness, the page fibers appear **intact**, not splintering.
-

Mechanical Stress Behavior

- The page responds with **resistance** but not cracking—this is typical of Golden Age stock that is approaching late-stage oxidation but has not failed structurally.
 - The bending edge remains smooth; there is **no whitening line**, which would indicate fiber breakage.
-

Overall Impression

This page shows **advanced oxidation** and **notable dryness**, but **the paper has not crossed into true brittleness**. It remains:

- **Stiff**
- **Dry**
- **Highly aged**

...but **still flexible enough** to withstand a light corner lift without cracking.

Careful handling is still required: the paper is near the brittle threshold, especially considering the severe staple corrosion noted earlier.