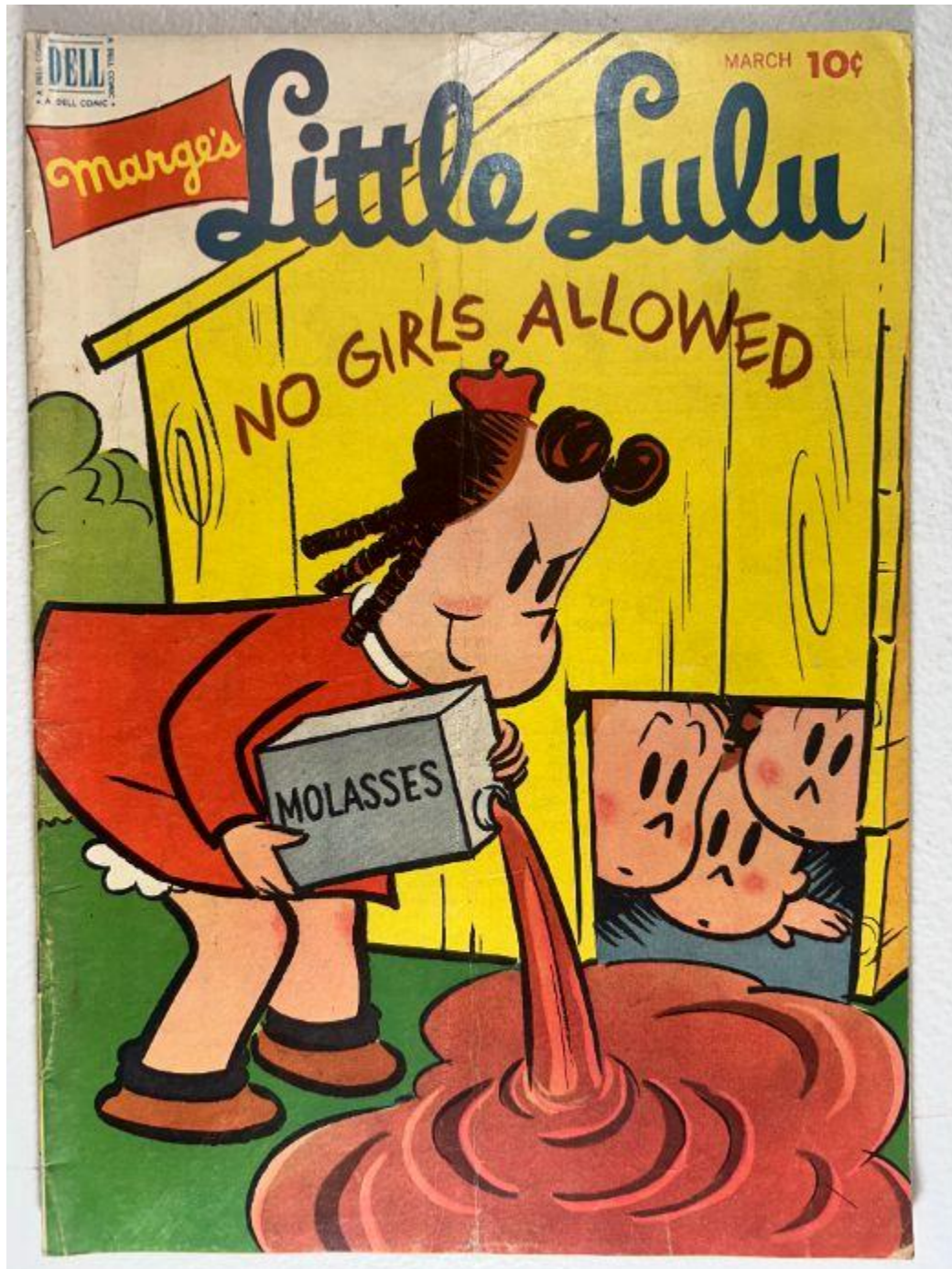


Marge's Little Lulu Vol. 1 No. 45 — March 1952



Front Cover Observations

*Marge's Little Lulu Vol. 1 No. 45 — March 1952*

---

### Cover Verification

The image matches known published descriptions of *Marge's Little Lulu #45*, including:

- The yellow wooden clubhouse with “**NO GIRLS ALLOWED**” text curved above the doorway [\[ebay.com\]](#)
  - The main character pouring **molasses** from a box toward the doorway where three individuals appear inside the clubhouse
- No discrepancies detected. [\[ebay.com\]](#)
- 

### Overall Layout & Scene Composition

- The cover depicts an outdoor setting with a bright yellow clubhouse occupying the right half of the composition.
  - The text “**NO GIRLS ALLOWED**” is hand-lettered in red above a small rectangular doorway.
  - A character in a red dress stands on the left side, leaning forward and holding a gray box labeled “**MOLASSES.**”
  - A thick, swirling stream of molasses pours downward to form a large puddle across the lower foreground.
  - Inside the clubhouse doorway, three rounded faces look outward, drawn with simple dot eyes and minimal line features.
  - The title “**Little Lulu**” appears across the top in large script-style blue lettering, with “**Marge’s**” placed on a slanted red banner at the upper left.
  - The upper-right corner shows the printed date **MARCH** and the price **10¢**.
- 

### Structural & Physical Condition

- Multiple vertical spine stress lines are present, with color breaks visible from top to bottom.
- A prominent horizontal crease spans the lower third of the cover.
- The top-left corner shows rounding and small edge wear; the bottom-left corner shows bending and abrasion.
- The cover surface exhibits loss of gloss, especially in the yellow background area, where light scuffing and dulling are visible.
- Minor color abrasion appears around the molasses puddle edge and on the red dress.
- A few tiny specks of discoloration are visible in the upper margin area.

---

### **Ink, Linework & Color Quality**

- Primary colors—yellow, red, blue, and green—remain vibrant, though slightly faded in high-exposure areas, especially the yellow shed wall.
- The black linework remains crisp around character outlines, the shed's wood grain, and the lettering.
- No noticeable ink smearing or registration shift is observed.
- The molasses stream retains strong tonal modeling, with smooth gradients and no print distortion.

---

### **Paper Quality**

- Mild overall toning is visible around the edges, consistent with early-1950s Dell publications.
  - No visible tears or missing material on any cover edge.
-

☑ Back Cover Observations

Marge's Little Lulu Vol. 1 No. 45 — March 1952

**Marge's Little Lulu**

"Look, folks! Here's a swell group picture of all the DELL COMICS gang in beautiful color. Read below how you can get yours. It's FREE!

**FREE**

Gift Offer to all my friends!"

*Little Lulu*

**Free offer!**

Subscribe to LITTLE LULU Comics and receive this big, handsome group photo as a gift. 8" x 10" — Comes in 4 lovely colors — Ideal for framing — handsome and durable. Lulu has hers right on her dresser. Hurry and get yours too!

**Another Free Gift!...**

Join the DELL COMICS CLUB, boys and girls. You will receive this swell certificate with pictures and signatures of the entire family. Also membership card. Detach it and slip it into billfold or wallet.

**PROUD DELL MEMBERS SAY!...**

"Little Lulu is my best girl. I love her because she is so clever and full of fun."

"All the girls in my club read MARGE'S LITTLE LULU. We wouldn't miss a single issue. Our parents enjoy her too."

- MARGE'S LITTLE LULU is a very famous little girl. Thousands of boys and girls and grown-ups too enjoy her pranks every single month. She is so clever she always outwits the other youngsters and gets the last laugh. You'll roar with delight too when you read LITTLE LULU. Tubby and all the gang will be on hand to bring you loads of fun. You can bet your life the new issues of LITTLE LULU will be better than ever. Only \$1.00 for a year!

Here are just a few of the big extras you receive when you become a regular subscriber to DELL COMICS.

- 12 Big Issues
- Free Membership in DELL COMICS CLUB
- Sensational New Group Picture
- Your Favorite Comic Characters Every Month.

## Overall Layout & Design

- The back cover consists of multiple advertisement blocks arranged in a collage-style layout, each with distinct shapes, colors, and tilted orientations.
  - The page background shows natural aging, with a light beige tone and scattered darkened specks across the surface.
  - The design relies heavily on bright, playful colors, including red, yellow, blue, pink, and green, consistent with promotional Dell Comics back covers from this era.
- 

### Upper-Left Red Panel

- A large red rectangular block dominates the top-left corner, featuring a stylized cartoon face with round hair-loops, dot-eyes, and a simple line mouth.
  - Below the face is a blue Dell Comics emblem.
  - Text appears in black within a yellow speech-bubble area beside the face.
  - The panel border shows small chips and faint dirt accumulation along the outer edge.
- 

### Upper-Right Yellow Panel

- A yellow block occupies the upper-right region, featuring handwritten-style mixed-color text with variations in line thickness.
  - The design includes multiple colors (blue, red, black, and pink), over a lightly mottled yellow background.
  - Minor smudging and slight abrasion appear along the right edge of this section.
- 

### Central Blue-Green "Free offer!" Panel

- A tilted rectangular panel with a muted blue-green background sits slightly right of center.
  - Black headline text begins with "Free offer!" and includes promotional content printed below.
  - A large multicolored cartoon group illustration occupies the lower half of the panel.
  - The panel's edges show mild softening and tiny spots of discoloration.
- 

### Lower-Left Pink Panel ("Another Free Gift!")

- A pink rectangular block appears in the lower-left quadrant, including text describing free Dell Comics Club membership.

- A membership card illustration in black and white sits at the bottom of the block.
  - This area shows a diagonal crease running lightly across the upper portion and slight discoloration near the border.
- 

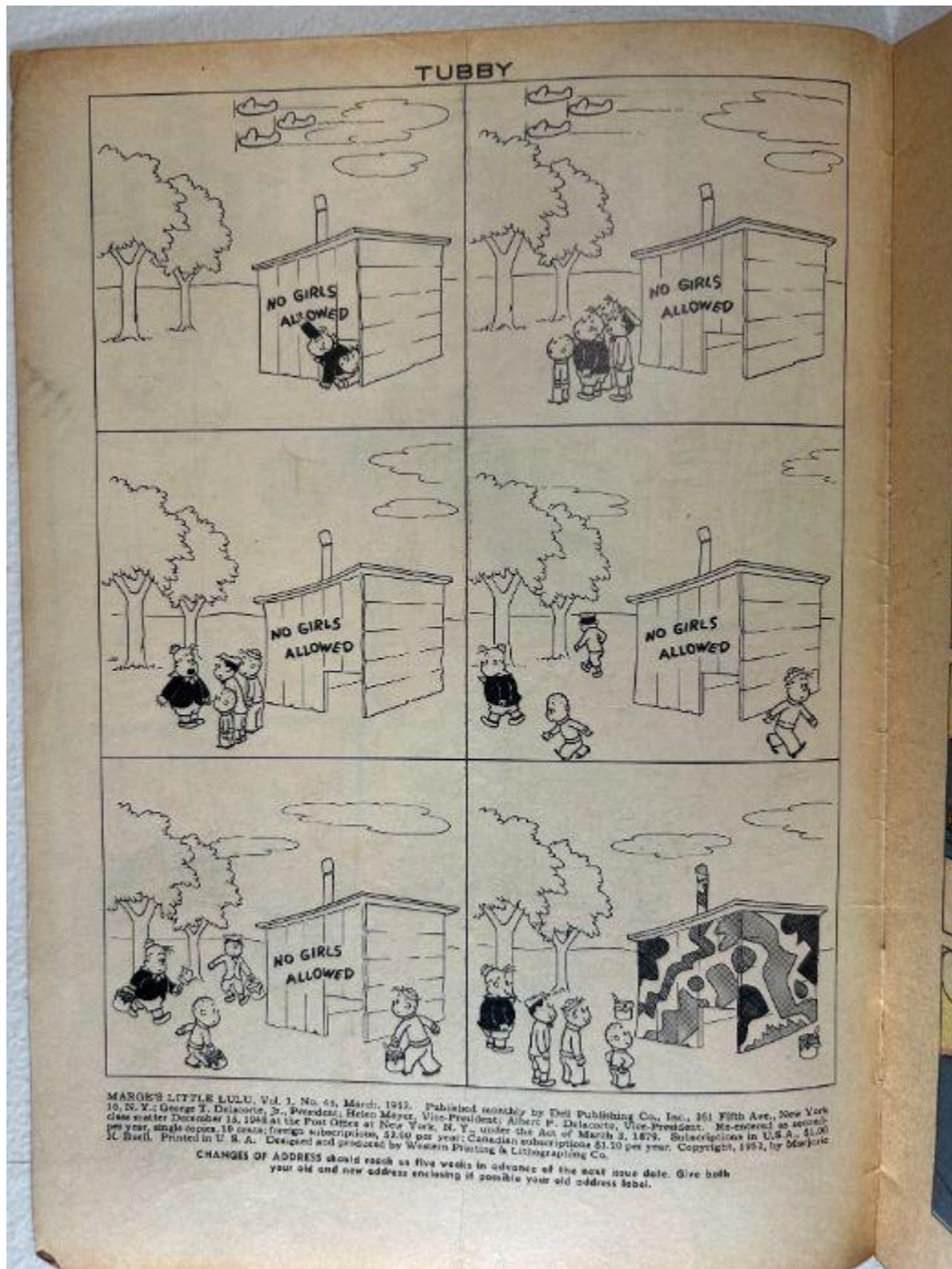
### **Lower-Right Yellow Panel (“Proud Dell Members Say!”)**

- A bright yellow panel contains speech bubbles with stylized cartoon faces positioned around them.
  - The ink remains strong in this panel, although faint smudging appears near the bottom margin.
  - Corners show mild wear and rounding.
- 

### **Condition & Surface Characteristics**

- Uniform edge toning is visible around all sides of the back cover.
  - Scattered foxing spots appear throughout the page, especially near the left and upper regions.
  - The paper surface shows small indentations and minor soiling expected of natural age-related handling.
  - No tears or missing pieces are visible in the provided image.
  - Ink remains vivid across all color panels despite general age-fading on the natural paper areas.
-

Inside Front Cover Observations  
Marge's Little Lulu Vol. 1 No. 45 — March 1952



## Indicia Verification

- The indicia at the bottom of the page clearly states:  
**“MARGE’S LITTLE LULU, Vol. 1, No. 45, March 1952...”**  
The publication date matches the known month and year. No discrepancy.
- 

## Overall Layout

- The page presents a six-panel black-and-white comic grid titled **“TUBBY”** at the top center.
  - The comic is arranged in two columns and three rows, each panel rectangular and evenly sized.
  - All panels depict a wooden clubhouse structure labeled **“NO GIRLS ALLOWED”**, a consistent visual motif repeated across the sequences.
- 

## Panel-By-Panel Structure & Elements

- **Upper Row:**
    - Three panels showing the clubhouse from slightly differing angles, with a tree line in the background and minimal cloud shapes above.
    - Characters walk or stand near the clubhouse, with consistent line thickness and simplified cartoon proportions.
  - **Middle Row:**
    - Panels repeat the clubhouse motif, with figures approaching, circling, or interacting with the structure.
    - The tree canopy and trunk shapes remain consistent, created with rounded cloud-like foliage and smooth trunk curves.
  - **Lower Row:**
    - First two panels mirror the repositioned characters and clubhouse.
    - Final panel shows a more complex illustration: the clubhouse exterior is now decorated with zig-zag and swirl patterns, with multiple figures observing the alteration.
- 

## Artwork & Line Quality

- Entire page is rendered in black ink on aging off-white paper.
- Linework remains sharp: clean outlines, consistent cross-hatching, and evenly weighted strokes.

- No ink bleeding or registration irregularities visible.
  - The text “**NO GIRLS ALLOWED**” appears within the panels multiple times, with slight variations reflecting hand-drawn reproduction.
- 

### **Paper Condition**

- Heavy toning along the right edge, with darker brown aging extending vertically from top to bottom.
  - Moderate toning along the left edge as well, though lighter than the right side.
  - Small scattered foxing spots present throughout the page interior.
  - Mild waviness appears along the gutter side, consistent with age-related moisture absorption.
  - No rips or missing sections visible.
- 

### **Indicia Block Details**

- Located across the bottom margin beneath the comic panels.
  - Contains publication data, copyright lines, printing credits, subscription statements, and change-of-address instructions.
  - Slight ink fade is visible in the lower-right corner of the text block due to paper oxidation.
-



## **Overall Layout & Structure**

- The centerfold consists of two full pages of sequential color comic panels.
  - Each page contains multiple rectangular panels arranged in a standard grid-like layout, with consistent gutters and uniform spacing.
  - The binding crease runs vertically through the middle, with visible aging, slight darkening, and small fiber lift around the staple line.
- 

## **Left Page — Panel Details & Artwork**

- Multiple comic panels show a group of illustrated characters standing outdoors in a neighborhood setting.
  - Background elements include stylized houses, trees with rounded foliage, fence lines, and simple horizon gradients.
  - Dialogue appears in speech bubbles above or beside characters, rendered in clear, black uppercase lettering.
  - The ground is depicted in muted yellow-tan tones with occasional green grass accents.
  - Character postures shift from standing in groups to walking or turning, with expressive but simplified linework.
  - Color application remains consistent, though slight misregistration is visible in some areas where outlines and fill colors shift minimally.
- 

## **Right Page — Panel Details & Artwork**

- Panels continue the storyline with additional illustrated characters interacting in the same outdoor environment.
  - One large panel prominently features a character in a red outfit with numerous round red objects surrounding them, drawn with motion lines indicating action.
  - Additional panels depict small groups of characters clustered together, engaging in conversation or reacting to events.
  - Background elements remain consistent with the left page: houses, grass, fencing, and clouds with soft curved forms.
  - Lower panels show walking figures, a simple road or walkway, and a distant landscape including green hills and minimal vegetation.
- 

## **Color, Ink & Print Quality**

- Saturation of reds, greens, yellows, blues, and browns remains strong but shows mild age fading.
  - Light dot-matrix patterning is visible in shaded or gradient regions due to vintage printing methods.
  - Thin black outlines around characters and landscapes remain generally sharp, though slight spread occurs in areas of heavier ink deposit.
  - No significant ink smearing is observed.
- 

### **Paper Condition**

- Noticeable tan aging is present throughout both pages, with heavier browning along the outer margins.
  - The inner margins closest to the staples show darker oxidation, likely from long-term metal contact.
  - Mild waviness is visible near the center binding, consistent with moisture exposure over decades.
  - Small foxing specks appear sporadically along the top and bottom margins.
  - No tears, missing pieces, or major creases appear within the visible centerfold area.
-

Spine Observations

*Marge's Little Lulu Vol. 1 No. 45 — March 1952*

---



**Overall Spine Visibility**

- The image shows a side-angled perspective of the comic resting on a white wire rack, allowing clear visibility of the spine edge from bottom to top.
  - The spine runs horizontally across the middle of the image, with the front cover facing upward and the back cover downward.
-

## **Spine Structure & Alignment**

- The spine appears generally straight, with only mild natural curvature due to age and paper memory.
  - There is no visible rolling or significant lateral misalignment, and both covers appear to meet evenly along the fold.
  - The spine fold shows moderate compression consistent with a mid-century saddle-stitched comic.
- 

## **Color Breaks & Stress Lines**

- Multiple stress lines are visible along the length of the spine, each presenting as white or lightly discolored breaks in the cover ink.
  - These lines appear at consistent intervals and reflect typical handling wear:
    - Several short stress marks near the upper spine region
    - A cluster of mid-spine color breaks, more prominent due to ink loss
    - Additional small stress lines toward the lower spine, though lighter and less severe
- 

## **Paper Condition Along Spine**

- Light fraying is present at the top and bottom edges of the spine.
  - The paper tone around the fold is slightly darker than the surrounding cover surface, showing oxidation and aging.
  - No tearing is apparent, and the spine remains fully intact without splitting.
- 

## **Staple Area (Partial Visibility)**

- Due to the angled photo and obstruction from the rack bars, staple heads are not fully visible.
  - There is no indication of rust migration or staining from this angle.
  - The spine remains firmly attached along the fold line, suggesting structural stability.
-

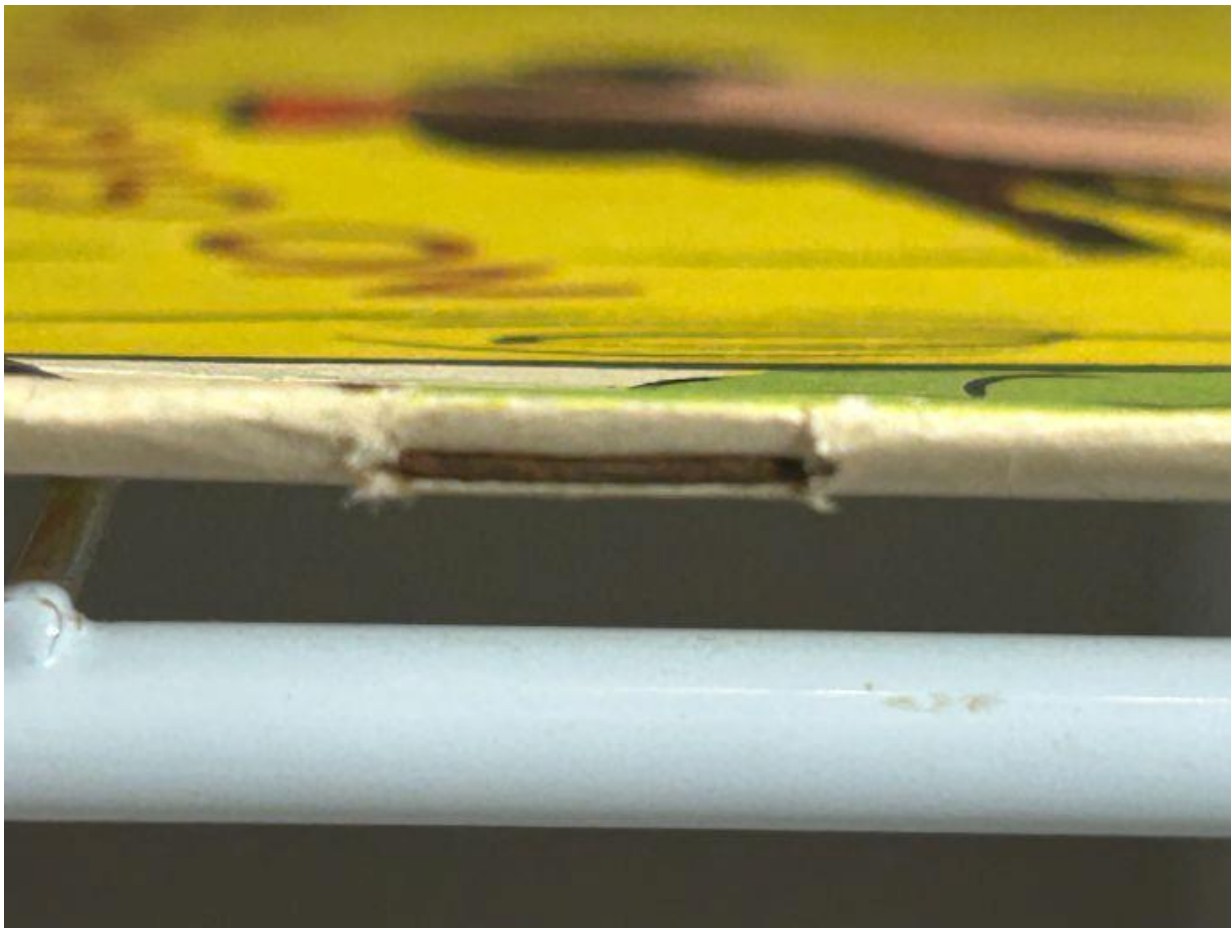
### Cover Position & Lift

- The cover shows a slight upward lift on the right side, likely due to natural warping or the way the comic is resting on the rack.
  - No pronounced warping or ripple is visible along the spine itself.
- 

### Staples Observations

*Marge's Little Lulu Vol. 1 No. 45 — March 1952*

---



### Upper Staple Area

- The upper staple is visibly recessed beneath the spine paper, indicating that the paper around the staple has worn or pulled slightly away over time.
- Small tears and fraying are present around the staple hole, with raw paper fibers exposed.
- The staple cavity appears widened, showing the inner fold beneath the cover layer.

- The surrounding spine paper displays stress-related creasing, with a shallow indentation running horizontally across the staple region.
  - No rust migration is visible from this angle; the staple appears darkened but not significantly corroded.
- 



### **Lower Staple Area**

- The lower staple shows more pronounced metal darkening, suggesting mild oxidation, though no staining appears to have transferred onto the paper.
- The paper surrounding the staple hole shows moderate abrasion, with the hole elongated horizontally and fibers pulled outward.
- A small section of the spine paper just below the staple is chipped or worn away, exposing an uneven edge.

- Color loss is present around the insertion point, with white paper visible where cover ink has broken away.
  - The staple appears tightly affixed, with no visible lifting or separation from the spine.
- 

### **General Condition Across Both Staples**

- Both staple regions show structural wear typical of Golden Age comics, including:
    - Paper fiber separation
    - Minor tearing around entry points
    - Surface abrasion and color breaks
  - Despite the wear, the staples appear to be holding the cover and interior pages securely with no signs of detachment.
  - There are no visible significant rust trails, staining, or structural failure in the provided views.
- 

### Inside Pages Observations

*Marge's Little Lulu Vol. 1 No. 45 — March 1952*

---

### **Overall Layout & Page Structure**

- All provided inside pages maintain the classic early-1950s Dell Comics panel structure: rectangular panels arranged in multi-row grids with uniform gutters and clean black outlines.
  - Color printing uses a traditional dot-matrix halftone pattern, visible particularly in sky areas, water areas, and large color fields.
  - Pages are held securely at the binding edge, with moderate browning near the inner margins.
-

Page Set 1 (Water Scene Sequence)



**Panel Composition & Artwork**

- The page depicts a sequence involving characters situated on or near a wooden raft on a body of water.
- Character motion is emphasized through directional lines and shifts in posture across panels.

- The water is represented by large blue expanses with black line ripples and shading variations.
- The shoreline, raft, and surrounding greenery are rendered in flat color blocks with simple perspective.

**Condition**

- Page shows uniform tan aging across the margins with darker brown toning along the right and bottom edges.
  - Ink registration remains mostly stable; minor shifts between black outline and color fill are visible in several panels.
  - No tears, missing pieces, or major stains.
-



## Title & Layout

- A bold story title appears at the top: **“Marge’s Little Lulu — The Case of the Exploding Cigar.”**
- Panels feature interior and exterior environments—houses, windows, chairs, doorways—drawn with simple but consistent geometric shapes.

## Artwork & Print Characteristics

- Characters remain expressive through exaggerated poses and line-weight variation.
- Color usage includes bright blues, greens, reds, and yellows, though slightly faded due to age.
- Speech bubbles are cleanly printed, with no ink bleed into panel edges.

## Condition

- The left margin shows heavier browning due to proximity to the spine.
  - A few small foxing flecks appear near the lower panels.
- 

## Page Set 3 (The Contest)

### Panel Details

- The top title reads **“Marge’s Little Lulu — The Contest.”**
- Scenes take place primarily inside a home interior with recognizable elements: a couch, table, window curtains, and door with visible hardware.
- Action sequences include door slamming, knocking, and character movement, illustrated with motion lines and sound-effect text.

### Color & Line Quality

- Reds and yellows remain strong despite age toning.
- Some mild color misalignment occurs near door edges and furniture outlines.
- Lettering inside speech bubbles is evenly printed and fully legible.

### Paper Condition

- Moderate uniform toning across the page, darker at the bottom edges.
  - No structural damage visible; page surface appears smooth with only minor waviness.
-

## Page Set 4 (Outdoor Group Sequence)

### Scene Composition

- Panels depict multiple characters interacting outdoors in a neighborhood setting.
- Repeating background elements include houses, picket fencing, ground shading, clouds, and distant greenery.
- The sequence mirrors earlier centerfold scenes but contains new dialogue and character arrangements.

### Art & Printing

- Colors remain bold in clothing and sky areas, though slightly muted compared to front-half pages.
- Black outlining is clear throughout, with only minimal dot-pattern inconsistencies in shaded zones.

### Condition

- Noticeable darkening on the right margin and lower corners.
  - Surface is generally smooth; no tears, creases, or detachment issues are visible.
-

Brittleness Test Observations

*Marge's Little Lulu Vol. 1 No. 45 — March 1952*

---



## Overall Page-Flex Behavior

- The lifted page shows **notable stiffness**, with the sheet bending in a firm arc rather than a loose, flexible curve.
  - The page does not appear to fold smoothly; instead, it maintains a resistant, semi-rigid shape typical of **high-oxidation, brittle mid-century pulp paper**.
- 

## Paper Tone & Oxidation Indicators

- The exposed interior page displays **deep tan to brown coloration**, particularly along the edges, consistent with advanced acidification common to early 1950s Dell Comics.
  - The tone is uniform and heavy, extending across the entire visible sheet, indicating **significant chemical aging** rather than isolated discoloration.
  - The upward-bent corner shows a sharp transition line, a sign that the paper fibers have lost elasticity.
- 

## Surface Condition

- Small particulate flecks and fiber debris are visible on the page surface, typical of paper that has begun to shed micro-fibers as brittleness increases.
  - The page edges appear slightly roughened, suggesting slow ongoing breakdown of the cellulose fibers.
- 

## Stress Points

- The lifted area shows **micro-cracking potential**: the tight arc of the bend suggests that the paper is near the threshold where further flexing could produce audible cracking or flaking.
  - There are no visible full tears, but the structure strongly suggests that **tearing risk is high** if flexed more sharply.
- 

## Print Stability

- The printed artwork underneath remains intact; halftone dots and color fields show no lifting or flaking.
- Despite the brittle stock, ink adhesion appears stable at this stage.