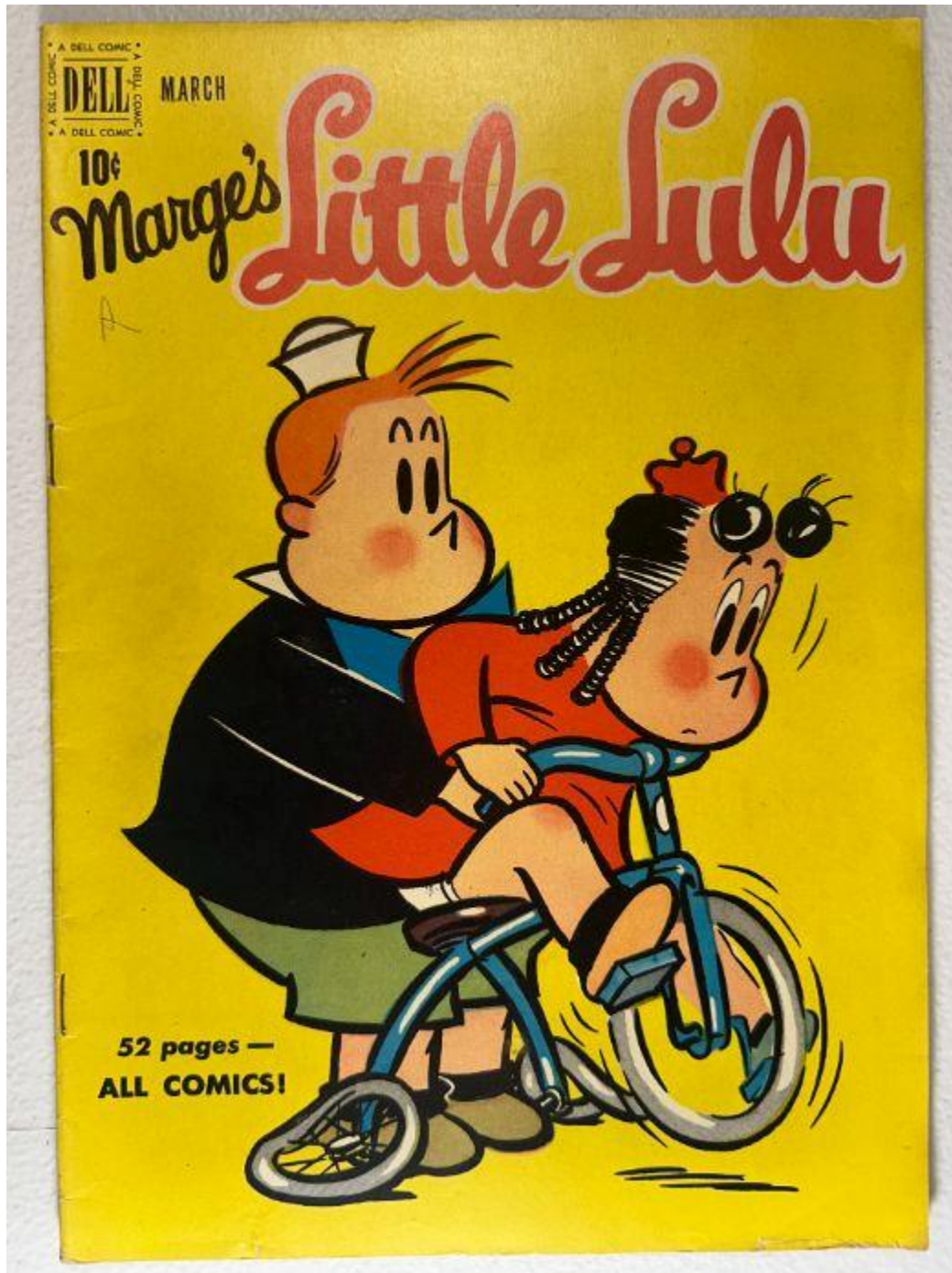


**Marge's Little Lulu Vol. 1 No. 33 – March 1951**

**Front Cover Observations**

*Marge's Little Lulu Vol. 1 No. 33 – March 1951*



## Overall Setting & Layout

The front cover displays a bright yellow background with a large, cartoon-style illustration occupying the center. Two characters appear in the foreground riding a small blue tricycle together. The cover is simple, bold, and humor-focused, in classic early-1950s Dell style, with no environmental scenery besides minimal motion accents.

## Foreground Elements

- Two figures are seated on or behind a small blue tricycle:
  - The front rider wears a red dress and dark footwear, with hair tied up in two rounded shapes decorated with small circular accessories. Hands are positioned at the handlebars.
  - The second rider stands on the back, leaning forward, with short upright hair strands and a dark coat.
- The front wheel appears to wobble, indicated by curved line strokes around it.
- Both figures are positioned on a flat plane with small black motion marks around the tires.

## Background Elements

- Solid bright yellow fill with no scenery.
- No ground details except minimal black strokes indicating movement.

## Visible Text

- **Top left:**
  - "DELL COMIC" inside the standard Dell box
  - Price **10¢**
  - **MARCH** (cover month)
- **Main title:** Large, stylized "Marge's Little Lulu" in red with black shadows
- **Bottom left:**
  - "52 pages — ALL COMICS!"

## Spine Area

- Spine shows visible stress lines near the staples.
- A small amount of chipping or fiber breakage is present along the upper spine region.
- Slight rounding of the spine edge suggests moderate handling and shelving wear.

# Condition Observations

## Corners

- **Top left:** Rounded with mild abrasion.
- **Top right:** Slightly softened, intact.
- **Bottom corners:** Rounded with light wear but no material loss.

## Edges

- Right edge shows light rubbing and faint discoloration.
- Top edge clean with a few tiny marks.
- Bottom edge shows mild scuffing.

## Surface Wear

- A few thin, non-color-breaking creases present near the lower corner.
- Small pencil mark ("A") visible to the left of the title.
- Yellow background shows minor scattered surface speckling typical of age.
- No stains or moisture marks.

## Color & Print Quality

- Title is bold with excellent red saturation.
- Characters display strong color fidelity—bright reds, blues, and flesh tones.
- Black outlines remain sharp and well-registered.

## Structural Integrity

- No tears, missing sections, or significant material loss on the cover.
- Staples appear tight though the spine paper shows mild stress.
- Paper remains flexible.

## Overall Front Cover Impression

A clean, bright, visually appealing cover with classic humor artwork. Wear is moderate and typical of a mid-grade Golden Age Dell comic—primarily along the spine and edges, with minimal surface creasing. Strong color retention and intact structure yield solid eye appeal.

---

Back Cover Observations

Marge's Little Lulu Vol. 1 No. 33 - March 1951

**READ THESE LETTERS**

**FROM MILLIONS OF READERS ALL OVER THE WORLD!**

Here's what boys and girls write in to tell us about Dell Comics . . . . .

**"I have read your Comics Books for years and still enjoy them. I like the way you keep them clean and humorous."**  
— Paul P., Port Orchard, Wash.

**"I think DELL COMICS are the best Comics I've ever read. I have about 80 Comics books and most of them are Dell Comics."**  
— Buddy B., Bryson City, N.C.

**"I thought you would like to know how much I enjoy reading DELL COMICS. The best money can buy. I never tire of reading them."**  
— Barbara T., Knoxville, Tenn.

**"Just a few lines to tell you how much I enjoy your Comics. I like the nice pictures on the covers. Am adding them to my collection."**  
— Shirley T., Northampton, Pa.

**I'M SO PROUD**  
to be a member of the **DELL COMICS FAMILY!**  
I receive so many nice letters from my readers.  
**Little Lulu**

● Little Lulu, Tubby, and their pals will bring you many exciting new adventures in the coming months. You will roar with delight as this mischievous, happy-go-lucky little prankster gets into all kinds of trouble. But she has a way all her own for getting out of tight situations. You will get a big kick when you see how clever she is in outwitting the boys! You will find every page packed with delightful fun and action. Each adventure is brand new and entirely different. You will want to read every single issue of Little Lulu. For only \$1.00, this magazine will be delivered to your home for a whole year. You receive 12 big issues, published every month — more than 600 pages of wonderful pictures and stories. Send in your subscription now!

**Also FREE membership!**

By subscribing NOW, you will also receive this attractive membership certificate to the **DELL COMICS Club**. It comes in beautiful colors, signed by all Dell Comics favorites. Certificate contains a detachable membership card with a place for your name. Just right for carrying in your wallet.

TAKE A TIP FROM MR. FOLAS. FILL IN THE HANDY FORM ON THE LAST PAGE OF THIS MAGAZINE — AND MAIL IT TODAY!

**DELL COMICS CLUB**

These exclusive photos are ideal for framing and perfect for your scrapbook. Your friends will rave about them and envy you. Get your set first while our supply lasts. Pictures come to you **FREE** with your subscription to **LITTLE LULU**.

**FREE**  
5 Gorgeous Pictures of **LITTLE LULU** and the Gang!  
In Full Color!



## Overall Setting & Layout

A full-page promotional layout designed in Dell's early-1950s "reader letter + free gift" style. The page is divided into angled white note-card shapes, bright promotional boxes, character illustrations, and text blocks. Dominant colors include yellow, red, blue, and cream. The layout appears intentionally dynamic, arranged to mimic clipped notes and posted letters.

---

## Foreground Elements

- Multiple **white letter panels** arranged at angles across the top, each containing printed text excerpts from readers.
  - A large illustrated character appears on the right side of the page, looking toward a speech-bubble-style blue shape reading "*I'M SO PROUD...*".
  - A **yellow rectangular promotional block** at bottom right displays three small sample pictures of Little Lulu scenes, advertising "FREE 5 Gorgeous Pictures."
  - A **red-and-yellow membership panel** at lower left advertises free Dell Comics Club membership.
- 

## Background Elements

- Light cream background with noticeable paper aging.
  - Overprint textures and tiny dots characteristic of Golden Age printing.
  - Slight off-white toning varies from top to bottom.
- 

## Visible Text (selected prominent elements)

- "READ THESE LETTERS" (upper left)
- "FROM MILLIONS OF READERS ALL OVER THE WORLD!"
- "I'M SO PROUD to be a member of the DELL COMICS FAMILY!"
- "FREE — 5 GORGEOUS Pictures of LITTLE LULU and the Gang!"
- "Also FREE membership!"
- Various reader-letter excerpts signed with locations (e.g., Orchard Wash., Byson City).

All text is clear and sharp.

---

## Condition Observations

### Toning

- Heavy toning across the entire page, more pronounced at the top and left margins.
- Uneven aging consistent with exposure on a storage edge.

### Corners

- **Top left:** Rounded with small abrasion and darkening.
- **Top right:** Softened but clean.
- **Bottom corners:** Rounded; slight surface wear but no material loss.

### Edges

- **Left edge:** Strong darkening and abrasion along the spine fold.
- **Right edge:** Cleaner with light rubbing.
- **Bottom edge:** Several small surface scuffs.

### Surface

- Light general scuffing on the cream background.
- No moisture staining, no foxing clusters, no pen/pencil marks.
- Slight speckling typical of 1950s newsprint aging.

### Color & Print Quality

- Yellows and reds remain bright; blacks are crisp.
- Minimal ink spread; print registration appears tight.
- No fading or heavy scuff removal.

### Structural Integrity

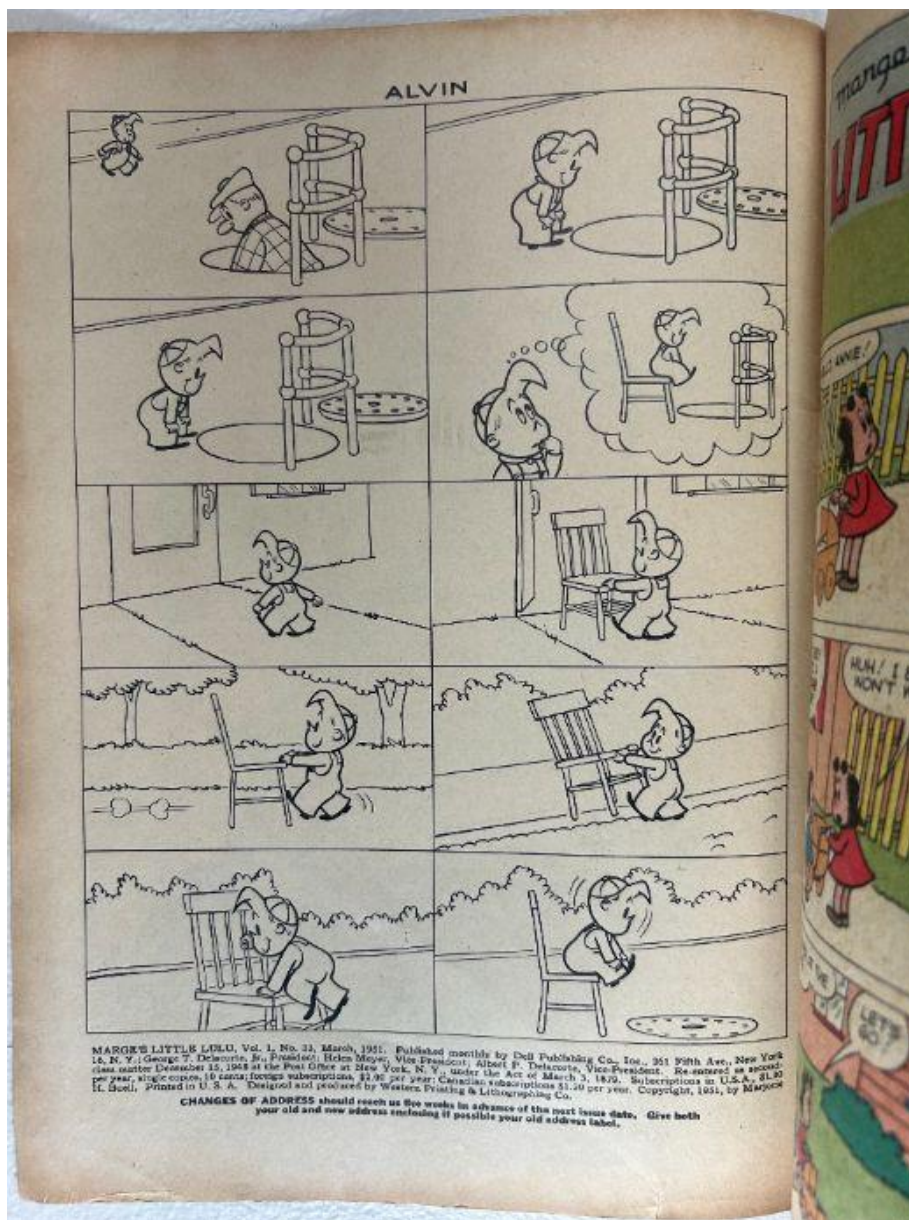
- No tears or chips.
  - Paper lies flat with no warping.
  - No dents or impressions interrupting the artwork.
-

# Overall Back Cover Impression

A colorful, well-preserved promotional back page with strong ink and very good visual clarity. Wear is typical for a mid-grade Golden Age issue—mainly corner softening, spine-edge toning, and minor surface scuffing. Structure and presentation remain solid and attractive.

## Inside Front Cover Observations

*Marge's Little Lulu Vol. 1 No. 33 – March 1951*



# Overall Setting & Layout

A full **9-panel** black-and-white pantomime strip titled "**ALVIN.**"

Panels are arranged in a **3 × 3 grid**, printed on heavily toned Golden Age interior stock.

The strip follows a single child-figure interacting with a tall, multi-tiered wooden structure, first examining it, then attempting to replicate it with a chair.

Across the bottom is the full publication block confirming the issue details.

---

## Panel-by-Panel Content Description

### Top Row (3 panels)

- **Panel 1:** A child appears from the left, observing a tall, circular multi-level structure with open sides.
- **Panel 2:** The child approaches the structure more closely with hands clasped.
- **Panel 3:** The child walks a circle around it, inspecting from another angle.

### Middle Row (3 panels)

- **Panel 4:** The child continues staring at the structure and its circular base.
- **Panel 5:** Thought bubble shows a mental image of the tall structure.
- **Panel 6:** The child retrieves a simple wooden chair from a house entryway.

### Bottom Row (3 panels)

- **Panel 7:** The child places the chair outside in the yard.
  - **Panel 8:** The child drags the chair across the grass, attempting arrangement.
  - **Panel 9:** The child places the chair upright and stands back, comparing it to the remembered structure.
- 

## Background Elements

- Indoor doorway and floor in central panel.
- Outdoor yard with grass, bushes, and horizon line in several panels.
- The tall, multi-tiered structure resembles playground equipment or scaffolding.
- Minimal shading; simple line art.

---

## Publication Block (Bottom Margin)

Includes:

- "MARGE'S LITTLE LULU, Vol. 1, No. 33, March, 1951."
- Publisher address and printing information.
- "CHANGES OF ADDRESS" instructions.

All text is complete and clearly printed.

---

## Condition Observations

### Toning

- Heavy Golden Age toning across entire page.
- Dark browning along upper edge and left gutter.
- Mild shadow toning along right edge.

### Edges

- Left edge deeply toned; slight roughness but intact.
- Right edge shows natural waviness from age.

### Corners

- Upper-left: rounded with crease.
- Bottom corners: rounded but stable.

### Surface

- Clean overall; no pen, pencil, or stains.
- Light speckling typical of early 1950s paper.

### Binding

- Inner gutter fully intact with no tearing.
- No staple stress visible from this angle.

## **Print Quality**

- Line art remains crisp.
  - No smudging or misregistration.
- 

## **Overall Inside Front Cover Impression**

A clean pantomime inside-front page with strong printing and no structural damage. Heavy but typical toning is present, while artwork and linework remain fully intact. Stable, tight gutter and clean surfaces make this a solid mid-grade interior page.

---

# ☑ Centerfold Observations

Marge's Little Lulu Vol. 1 No. 33 – March 1951



## Overall Setting & Layout

A full two-page interior story sequence presented in color. Panels run across both pages in a continuous narrative involving a new girl named *Gladys*, several children interacting with her, a torn dress incident, and mistaken identity at the end. The gutter is intact, and both pages show uniform age toning typical of early-1950s Dell newsprint.

---

### Left Page Observations

#### Panel Content & Narrative Flow

- **Top row:**
    - Lulu introduces *Gladys* to a group of children standing in front of a wooden fence.
    - Multiple children react animatedly, crowding around the newcomer.
    - Gladys appears hesitant and steps back slightly.
  - **Middle row:**
    - Children circle around Gladys, attempting to talk to her.
    - Two children grab Gladys by both arms, arguing over who gets to take Gladys somewhere.
    - As they tug, Gladys's dress tears open in the next frame — the group freezes in shock.
  - **Bottom row:**
    - Gladys is visibly embarrassed; one child covers Gladys with a coat.
    - A group of children argue about who Gladys "likes best."
    - A chase ensues across the yard as characters sprint after one another. Motion lines emphasize running.
-

## ☑ Right Page Observations

### Panel Content & Narrative Flow

- **Top row:**
    - The chase continues into a yard area with grass and small house structures in the distance.
    - Children argue about who gets to keep the coat around Gladys and who caught her first.
    - Running figures move from left to right across the scene.
  - **Middle row:**
    - Lulu runs quickly away, clutching the coat, with large arcing motion lines behind.
    - The pursuing group of children stops abruptly near a walkway.
  - **Bottom row:**
    - The group discusses Gladys again; one child questions what Gladys “looks like” or whether anyone has actually seen her running around.
    - The final frame shows a character speaking from behind a fence, revealing a misunderstanding among the group.
- 

### Background Elements

- Wooden fencing with vertical slats throughout many panels.
  - Simple early-1950s suburban setting: grass fields, pathways, house facades, bushes.
  - Panel borders evenly spaced with stable color printing.
- 

### Condition Observations

- **Toning:** Heavy Golden Age toning on both pages; darker concentrated along gutter and top margins.
  - **Edges:** Smooth with minor waviness; no chips or tears visible.
  - **Corners:** Rounded but intact, typical for the era.
  - **Surface:** Clean printing with no stains, pencil marks, fingerprints, or moisture effects.
  - **Color:** Strong saturation — reds, blues, flesh tones, and fence yellows remain vivid.
  - **Binding:** Gutter appears firm; no centerfold separation or stress tears at staples.
-

## **Overall Centerfold Impression**

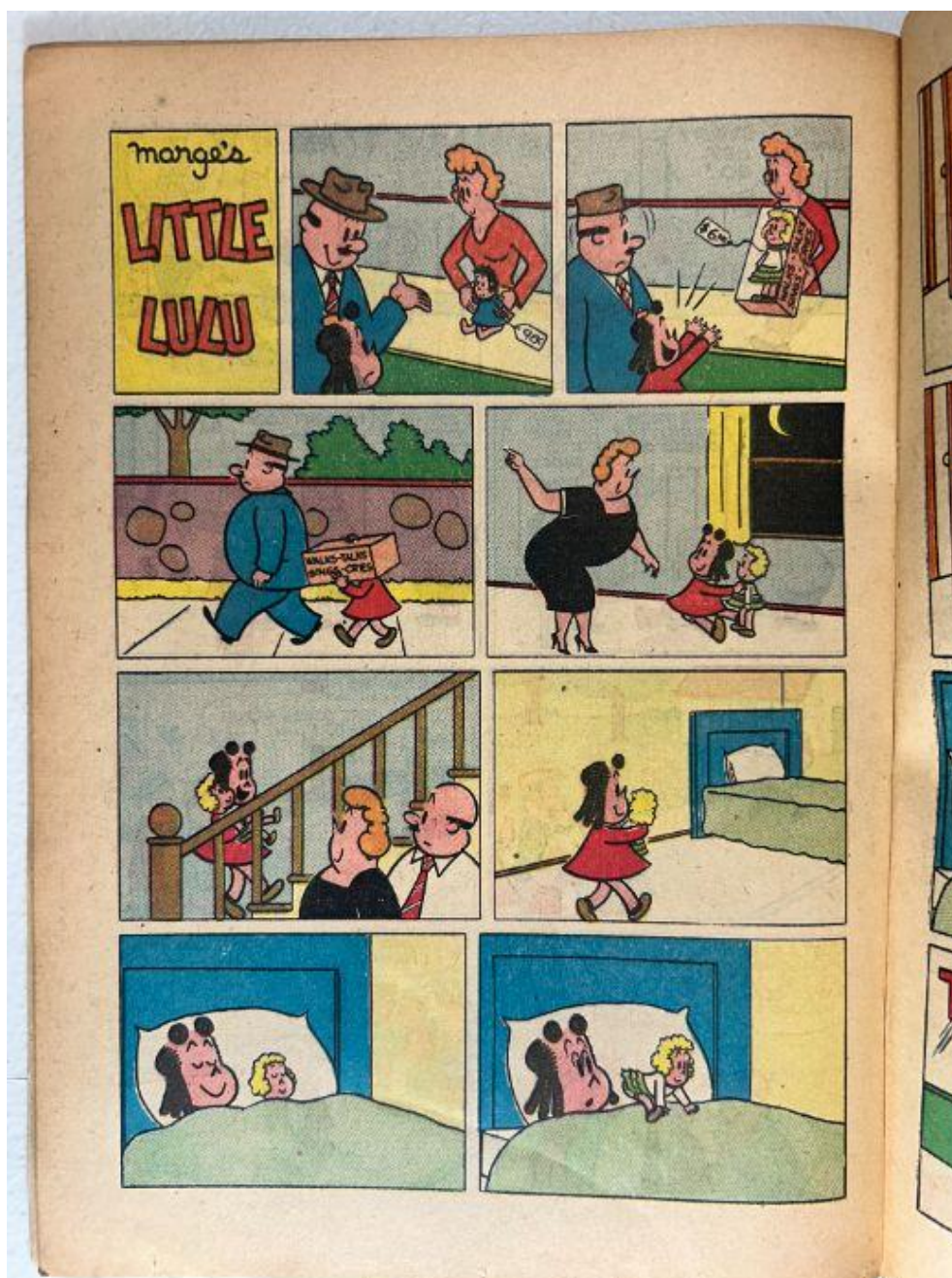
A complete, bright, and structurally sound centerfold with vivid color and well-preserved artwork. Toning is heavy but uniform. No tears, stains, writing, or staple stress are present. Overall presentation is consistent with a solid mid-grade Golden Age interior.

---

# ☑ Inside Pages Observations

Marge's Little Lulu Vol. 1 No. 33 – March 1951

## 📄 Inside Page 1 (IMG\_0899.jpeg)



## Overall Setting & Layout

A full-color nine-panel story page opening with the "Marge's Little Lulu" title box in red and yellow. The narrative follows a child figure who receives money, delivers an item, travels home with an adult, and ultimately ends up in bed with another figure.

## Panel Content Highlights

- A child hands an item (looks like a book or folder) to an adult who exchanges money.
- The child returns home, shown walking beside an adult on the sidewalk.
- Indoors, an adult figure scolds or gestures strongly while the child responds.
- The child climbs stairs and is seen entering a bedroom with another small figure.
- Final two panels: both are lying in bed; the second figure reveals money in hand.

## Background Elements

- Outdoor sidewalk with short wall and greenery.
- Indoor staircase railing, wall frames, and a simple bedroom with a blue headboard.

## Condition Observations

- Heavy toning with darker outer margins.
  - Corners rounded; edges slightly rough.
  - No tears or stains.
  - Strong color retention.
-

## 📄 Inside Page 2 (IMG\_0900.jpeg)



## Overall Setting & Layout

A nine-panel full-color story page featuring a small figure caught in a rainstorm who hides inside a discarded tin can. The page is highly expressive, using large sound effects and close-ups.

## Panel Content Highlights

- Child finds a tin can and climbs inside to stay dry.
- Rain pours heavily; the child waits for it to stop.
- Internal monologue panels show fear and uncertainty.
- After rain clears, the child exits the can into tall grass.
- The world appears oversized relative to the child ("Everything was so big!").
- Child walks home along a large sidewalk curb.

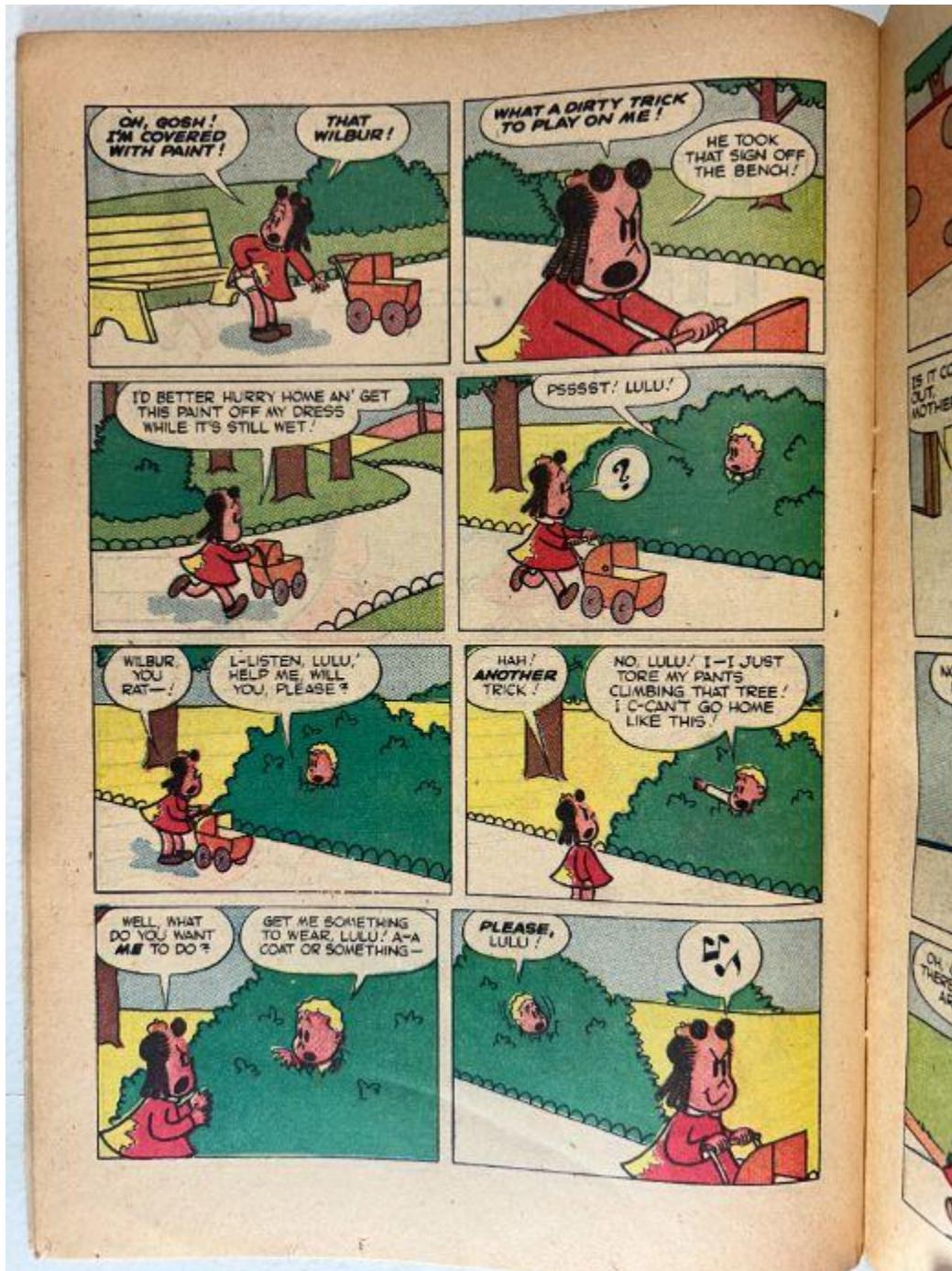
## Background Elements

- Heavy rain, puddles, grass reeds, tin can interior.
- Oversized curb and sidewalk create forced-perspective story gag.

## Condition Observations

- Strong toning; heavier at edges.
  - Clean surface with no marks.
  - Very stable color, especially greens and yellows.
-

## 📄 Inside Page 3 (IMG\_0901.jpeg)



## Overall Setting & Layout

A nine-panel story page involving a character who becomes covered in paint and seeks help from another figure. The setting is largely park-like with paths, benches, and hedges.

## Panel Content Highlights

- Child becomes covered in red paint after sitting on a freshly painted surface.
- Attempts to hurry home before the paint dries.
- Another figure secretly calls out from behind bushes.
- A misunderstanding begins; the hidden figure asks for help because their pants tore.
- The two negotiate: one wants help removing paint; the other wants a coat for covering torn pants.
- Page ends with the hidden figure pleading repeatedly.

## Background Elements

- Park benches, sidewalks, bushes, house walls, simple trees.

## Condition Observations

- Heavy toning.
- Rounded corners.
- Clean, no staining or tears.
- Good saturation on reds, greens, and blues.

---

## Inside Page 4 (IMG\_0896.jpeg)

## Overall Setting & Layout

A title page for a story titled “**Little Lulu — Treasure Hunt.**” Features outdoor scenery, a wooden fence, and two figures talking about a treasure hunt plan.

## Panel Content Highlights

- Lulu meets another child (Annie) and discusses overhearing boys planning a treasure hunt.
- They decide to follow the boys and possibly join them.
- They walk together past a fence and go toward a clubhouse area.
- Page ends with both heading out determinedly.

## Background Elements

- Yellow picket fencing, green lawns, houses, shrubbery.
- Simple backgrounds highlighting character motion.

## Condition Observations

- Heavy toning; darker upper margin.
  - Smooth edges; corners rounded.
  - Clean surface, no marks.
- 

### Inside Page 5 (IMG\_0898.jpeg)

*(This is the continuation page previously seen in the centerfold sequence.)*

## Overall Setting & Layout

A nine-panel story conclusion involving the character Gladys, a torn dress, embarrassment, and mistaken identity.

## Panel Content Highlights

- Children arguing over who should escort Gladys.
- Tugging incident tears her dress.
- Characters cover Gladys and send her home quickly.
- Gladys runs across yard; group discusses what she looks like.
- A character (Wilbur) nervously denies seeing her.
- "The End" appears in final panel.

## Background Elements

- Wooden fencing, lawn area, pathways, house exterior.
- Indoor doorway and wall in last row.

## Condition Observations

- Heavy toning.
  - Rounded corners.
  - No tears, stains, or writing.
  - Strong color.
- 

## Overall Inside Pages Impression

Across all inside pages:

- Heavy but uniform Golden Age toning
  - Clean artwork, no staining, writing, or moisture damage
  - Strong color across all pages
  - Corners rounded but intact
  - Good binding strength, no gutter splitting
  - Consistent mid-grade preservation
-

## ☑ Spine Observations

*Marge's Little Lulu Vol. 1 No. 33 – March 1951*



## Overall Setting & Layout

The comic is shown resting horizontally on a white wire rack, photographed from a low side-angle that emphasizes the spine contour, cover lift, and lower-edge alignment. The wire rack creates a clear separation between the book and the background, making spine shape easy to evaluate.

---

## Spine Shape & Roll

- A **moderate spine roll** is present, tilting the front cover downward toward the camera.
- The roll extends **evenly from top to bottom**, with the cover curving away from the page block.
- Back cover appears flatter, confirming a forward-leaning roll rather than lateral warping.

---

## Spine Surface Condition

- The visible spine edge shows **multiple color-breaking stress lines**, particularly near the staple regions.
- Light abrasion is present along the fold, removing small flecks of the yellow background ink.
- No deep chips, but small **paper nicks** are visible intermittently along the length.

---

## Cover Lift & Edge Behavior

- The front cover is lifting slightly away from the interior pages due to the spine roll.
- Bottom edge shows slight **waviness**, consistent with aged newsprint, but no tears or breaks.
- The tricycle front tire area appears visually lower because of the roll, not damage.

---

## Staple Region (as visible from this angle)

- Upper and lower staple areas show outward pressure but **no staple pop** or metal lifting.
- Paper tension around the staples appears affected by roll but still intact.
- No visible splitting or tearing into the gutter from this angle.

---

## Spine Ends

- **Top spine end:** rounded with mild compression; no missing paper.
- **Bottom spine end:** slightly more compressed, showing typical shelf wear, but intact.

---

## Structural Integrity

- No spine splits visible.
  - The fold retains full structural connection even with moderate roll and surface wear.
  - Paper fibers appear aged but stable.
-

## ☑ Overall Spine Impression

A structurally sound spine with **moderate roll**, light abrasion, and typical Golden Age edge wear. No splits or staple pops visible. Cosmetic wear is moderate but stable, consistent with a **mid-grade** copy.

---

## ☑ Staples Observations

*Marge's Little Lulu Vol. 1 No. 33 – March 1951*

---

## 📌 Upper Staple (IMG\_0903.jpeg)



## Metal Condition

- Metal shows **moderate oxidation**, presenting as a dull, darkened surface.
- No active rust bloom or flaking is visible.
- Staple crown is **straight and flush**, not lifted or bent.

## Surrounding Paper Condition

- Multiple **color-breaking stress lines** radiate outward from the staple, especially upward into the yellow field.
- Small **paper fractures** appear at both ends of the staple opening.
- The cover ink layer shows **minor thinning** immediately adjacent to the staple on both sides.
- Slight **fiber lift** is visible at the left edge of the staple cavity.

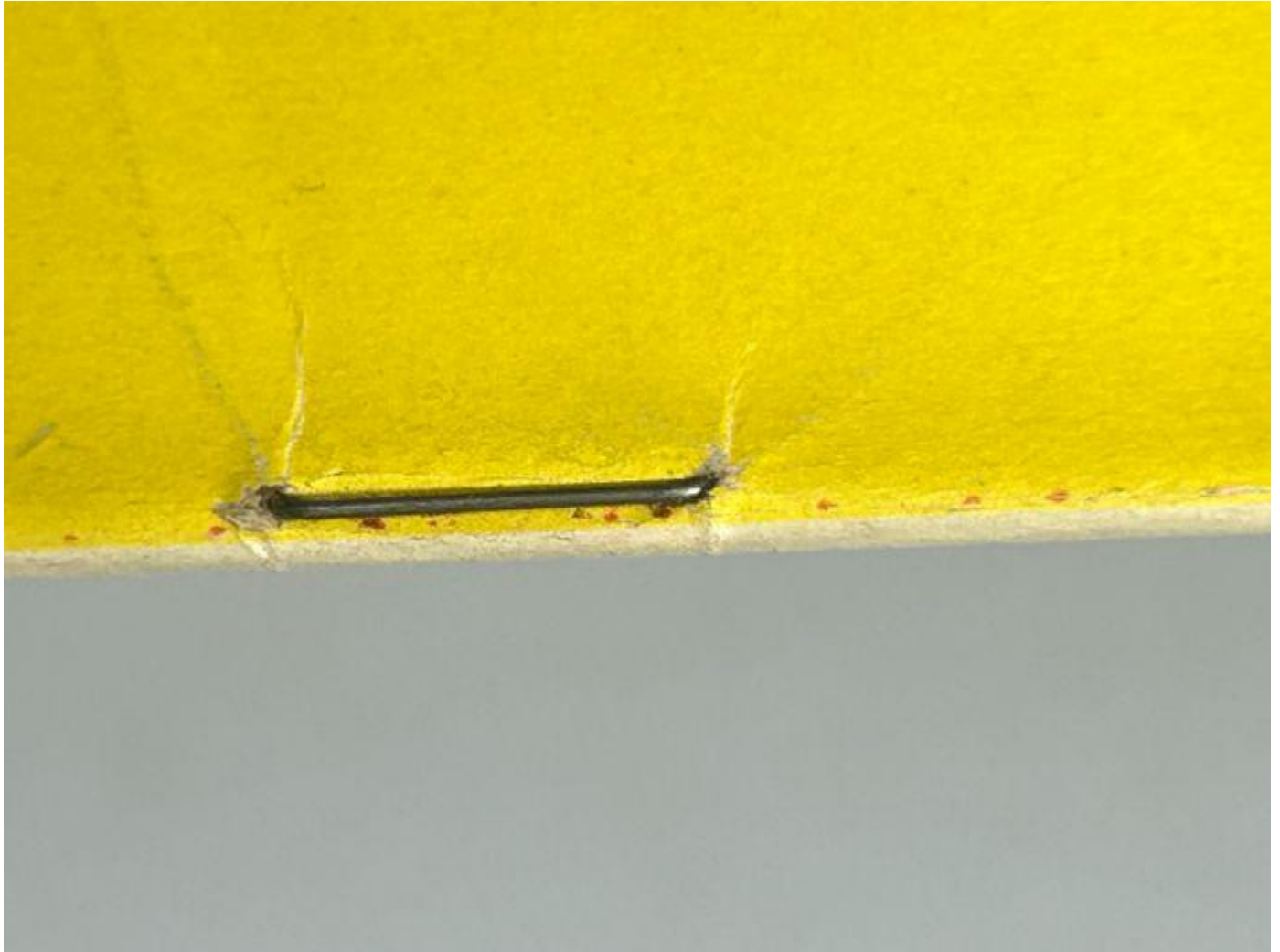
## Tears & Fiber Disturbance

- A shallow **split** forms at the right end of the staple line, extending slightly along the spine fold.
- Paper fibers appear slightly rough and open along the crack.
- No large tears, but several **micro-fissures** indicate repeated flexing.

## Structural Integrity

- Despite stress marks, the staple remains **fully anchored**.
  - No sign of staple pop or detachment.
  - Damage is cosmetic rather than structural.
-

## Lower Staple (IMG\_0904.jpeg)



### Metal Condition

- Staple displays **light oxidation**, slightly less pronounced than the upper staple.
- Crown remains straight, tight, and clean with no lift.

### Surrounding Paper Condition

- Noticeable **abrasion** on the left side of the staple hole where cover ink has been rubbed or eroded.
- Small **indentation marks** appear along the spine fold just above and below the staple.
- Color-breaking creases extend outward horizontally from the staple.
- Tiny red-orange specks under the staple may indicate original printing artifacts, not rust.

## Tears & Fiber Disturbance

- Very small **fiber breaks** at each end of the staple hole.
- No major tears; all damage is minor and confined to the immediate staple area.
- Paper fibers appear slightly hardened, typical for 1950s spine folds.

## Structural Integrity

- Staple is securely in place.
- No sign of pulling through or enlargement of the staple cavity.
- Overall structurally stable despite visible wear.

---

## Overall Staples Impression

Both staples remain **secure and structurally sound**, but surrounding paper shows:

- Moderate oxidation
- Color-breaking stress lines
- Minor tears and fiber lift
- Abrasion and ink thinning at staple holes

These defects are typical of **mid-grade Golden Age Dell comics** and will factor into both evaluation reports under structural and spine-related deductions.

---



## Overall Bend Behavior

- The lifted corner curls in a **smooth, rounded arc** with no stiffness, cracking, or sudden snapping.
- The paper flexes normally and returns toward flat position when released, indicating **retained elasticity**.

## Edges & Fibers

- The exposed outer edge shows **heavy Golden Age toning**, deep tan-to-brown in coloration.
- Despite oxidation, the fibers remain **cohesive** — no crumbling, flaking, or powder residue along the edge.
- No fiber splitting is visible at the bend.

## Surface & Color Layer Response

- The color layer bends without producing **color-break cracks**.
- No new crease lines appear during the bend.
- The underside sheet shows equally aged but stable paper.

## Structural Integrity

- No micro-tears or delamination develop at the corner.
- Page layers remain unified, with no internal separation.
- The paper does not exhibit crisp brittleness; instead, it moves flexibly and consistently with well-preserved 1951 interior stock.

**Brittleness Rating: 8 / 10 — aged but flexible**