

Marge's Little Lulu Vol. 1 No. 31 – January 1951



Front Cover Observations

Marge's Little Lulu Vol. 1 No. 31 – January 1951

Overall Setting & Layout

The image shows the complete front cover of *Marge's Little Lulu Vol. 1 No. 31*. The scene is set outdoors in a snowy urban environment beside a brick building. A bus has stopped at a street-side **BUS STOP** sign, and a group of three snow figures stands waiting as the bus driver looks out toward them. A small childlike figure in a red winter outfit approaches from the left side of the cover.

Foreground Elements

- A small figure wearing a red coat, red boots, yellow scarf, and red hair accessory stands at the left, raising one hand to the face.
 - The figure's boots and the ground beneath show **blue-tinted snow patches**, suggesting packed or refrozen snow.
 - At the right side of the scene, **three snow figures** of varying heights stand in a line:
 - One large snow figure wearing a dark cap
 - A mid-sized snow figure with defined facial features
 - A small rounded snow figure with texture indicating a hat or hair-like snow top
-

Background Elements

- A green bus is stopped behind the snow figures.
 - The **bus driver**, in a brown coat and brimmed hat, is visible through the open bus door and the window.
 - The bus windows show white streaks, indicating reflections or frost.
 - A brick building occupies the upper left portion of the cover.
 - Snow on the ground includes footprints and irregular patches.
-

Visible Text

- **Top Left:**
 - "DELL COMIC" inside the Dell logo box
 - "10¢"
 - "JAN."
- **Main Title:**
 - "Marge's Little Lulu" with "Marge's" in red cursive and "Little Lulu" in dark blue stylized script
- **Lower Right:**
 - "52 pages — ALL COMICS!"
- **Mid-Left:**
 - "BUS STOP" printed inside a circular sign

All text is fully legible and well-printed.

Spine Area

- The spine shows **significant wear**, including:
 - Multiple small chips revealing white paper beneath
 - Vertical color breaks along the fold
 - Abrasion near the upper staple
 - The top and bottom spine ends are visibly rounded with some loss of surface ink.
-

Condition Observations

Corners

- **Top left:** Rounded with noticeable abrasion.
- **Top right:** Rounded; mild softening.
- **Bottom corners:** Rounded, intact, no tears.

Edges

- Left edge (spine side): Most wear; chipping and color loss.
- Right edge: Light rubbing, generally clean.
- Top and bottom edges: Mild wear and small surface nicks.

Surface Wear

- Minor non-color-breaking creases around the lower left area.
- Light scuffing near the BUS STOP sign region.
- Slight darkened discoloration near upper right edge.

Color & Print Quality

- Strong overall color saturation (bright red, green, blue, and yellow).
- Linework is sharp, with no registration misalignment.
- No evidence of fading, water staining, or ink lift.

Structural Integrity

- No tears or missing sections.
- Cover lies flat with light warping typical of 1950s newsprint.
- Staples appear intact beneath the spine wear.

Overall Front Cover Impression

A visually appealing, mid-grade Golden Age cover with excellent color and intact artwork. The primary defects consist of spine wear, corner rounding, and minor surface abrasions, all consistent with typical handling for an early 1950s Dell comic.

☑ Back Cover Observations

Marge's Little Lulu Vol. 1 No. 31 – January 1951



Overall Setting & Layout

The back cover is a full-page **holiday-themed subscription advertisement**, dominated by bright reds, greens, and yellows. A large illustrated figure in a red coat occupies the top right, gesturing toward promotional content. The layout consists of layered images, gift card graphics, subscription details, and text blocks arranged vertically down the page.

Foreground Elements

- Large illustrated holiday figure in red clothing at the upper right, positioned above the promotional message "A Christmas GIFT Every Month...!"
 - Two inserted image panels angled near the center-left:
 - **A group portrait illustration** featuring numerous cartoon characters.
 - **A Dell Comics Club membership certificate** featuring stylized character icons along the border.
 - Lower portion includes two large ornament-shaped graphics:
 - **A red-and-green ornament** containing text.
 - **A pink ornament** labeled "Gift Card..."
 - A smaller illustrated figure at lower left holds a circular sign with promotional wording.
-

Primary Text Elements (as printed)

- **Top Header:**
"A Christmas GIFT Every Month...!"
- **Subscription Offer:**
 - Promises a full year of *Little Lulu* issues as a gift.
 - Describes that additional "surprise gifts" accompany a subscription.
- **FREE Section:**
 - Highlights the Dell Comics Family album pictures and club membership card.
- **Middle Paragraph:**
 - Explains the appeal of Little Lulu comics, emphasizing monthly enjoyment and character antics.
- **Savings Box (left side):**
 - "In just 1 minute you can arrange for your gift..."
- **Bottom Pricing Section:**
 - 1-year subscription for **\$1.00**
 - 2-year subscription for **\$1.85**
- **Gift Card Ornament:**
 - Indicates an attractively designed card accompanies the subscription.

All text remains fully readable.

Illustrated Panels & Decorative Elements

- A holiday-themed figure at the top uses hand gestures to direct attention to the subscription benefits.
 - Ornaments hang from attached strings, adding to the seasonal theme.
 - The certificate illustration is printed at a slight tilt and includes small character heads around the border.
 - The character at the bottom-left appears to be making a promotional statement, standing on snow or white ground.
-

Condition Observations

Toning

- Moderate toning across the page.

- Slight darkening near the edges, especially top and lower-left regions.

Corners

- **Top left:** Rounded with visible discoloration.
- **Top right:** Light edge wear, rounded.
- **Bottom corners:** Both softened but intact, no missing material.

Edges

- **Left edge:** Noticeable darkening and mild abrasion.
- **Right edge:** Light wear, generally clean.
- **Bottom edge:** Small surface rubs, no tears.

Surface

- Some minor scuffing, mainly in lighter color fields.
- No stains, moisture ripples, or foxing marks.
- No writing or pencil impressions.

Color Quality

- Strong saturation on reds, greens, and yellows.
- Black text remains crisp.
- No fading or smudging.

Structural Integrity

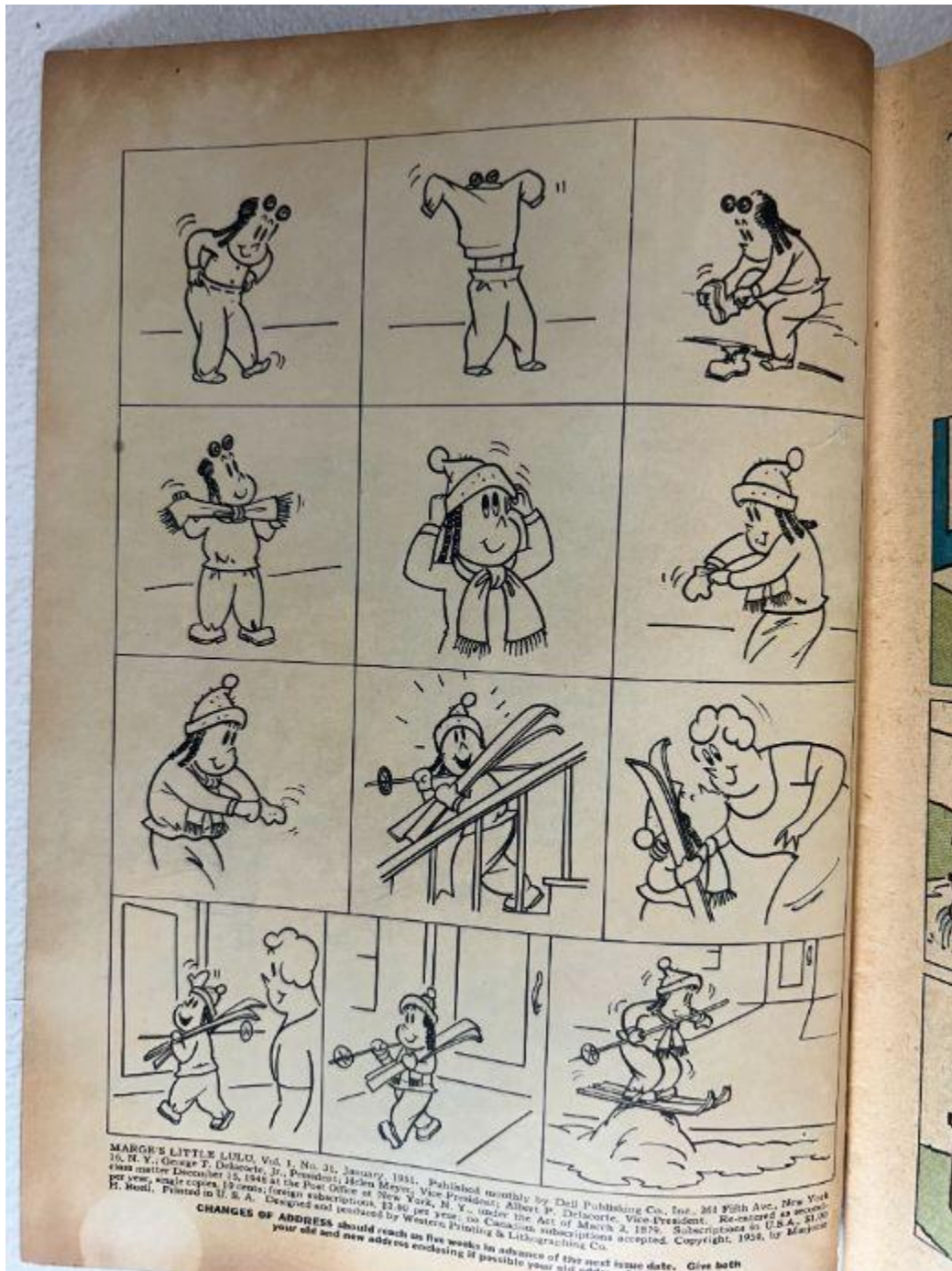
- Page lies flat without warping.
- No tears or chips.
- No dents or impressions affecting artwork.

Overall Back Cover Impression

A vibrant, seasonally themed Dell subscription advertisement with excellent color and clear print quality. Aging is visible primarily through corner rounding and edge toning, but the surface remains clean and structurally strong — consistent with a **mid-grade Golden Age back cover**.

Inside Front Cover Observations

Marge's Little Lulu Vol. 1 No. 31 - January 1951



MARGE'S LITTLE LULU, Vol. 1, No. 31, January 1951. Published monthly by Dell Publishing Co., Inc., 361 Fifth Ave., New York 18, N. Y.; George F. Delacorte, Jr., President; Helen Meyer, Vice President; Albert P. Delacorte, Vice President. Re-estimated as second-class matter December 15, 1948 at the Post Office at New York, N. Y., under the Act of March 3, 1879. Subscriptions in U.S.A., \$1.00 per year; single copies, 10 cents; foreign subscriptions, \$2.50 per year, no Canadian subscriptions accepted. Copyright, 1951, by Margaret H. Bond. Printed in U. S. A. Designed and prepared by Western Printing & Lithographing Co.

CHANGES OF ADDRESS should reach us five weeks in advance of the next issue date. Give both your old and new address enclosing if possible your old address label.

☑ Inside Front Cover Observations

Marge's Little Lulu Vol. 1 No. 31 – January 1951

Overall Setting & Layout

A full **black-and-white 12-panel pantomime gag strip** arranged in a **3 × 4 grid**, featuring a single child figure performing a sequence of winter-themed actions. The page is printed on heavily toned Golden Age newsprint with a publication block along the bottom margin confirming the issue details.

Panel-by-Panel Content Description

Top Row (3 panels)

- **Panel 1:**
A child wearing a winter hat with pom-poms leans forward and begins fastening or inspecting outerwear.
- **Panel 2:**
The child raises both arms, appearing to adjust clothing or collar.
- **Panel 3:**
The child bends down, tying or checking footwear.

Second Row (3 panels)

- **Panel 4:**
The child pulls both sleeves outward as if tightening or shaking snow from them.
- **Panel 5:**
The child places both hands to the cheeks, standing upright and centered.
- **Panel 6:**
The child extends both arms while twisting the torso slightly.

Third Row (3 panels)

- **Panel 7:**
The child steps forward with arms bent, preparing for an action.
- **Panel 8:**
The child places a long wooden pole onto a small staircase-like platform.

- **Panel 9:**
Another figure (larger adult-sized body shape) approaches the child with arms extended toward the pole.

Bottom Row (3 panels)

- **Panel 10:**
The adult figure begins walking away as the child follows behind with the pole.
 - **Panel 11:**
The child carries the pole confidently while walking forward.
 - **Panel 12:**
Both figures cross paths again, now holding their respective objects while moving opposite directions.
-

Background Elements

- Minimal line backgrounds emphasize character motion.
 - A staircase-like structure appears in one panel.
 - Indoor architectural outlines include doorway frames and interior walls.
-

Publication Block (Bottom Margin)

Includes:

- "MARGE'S LITTLE LULU, Vol. 1, No. 31, January, 1951."
- Publisher listing, address, printing location
- Subscription and change-of-address instructions

All text is intact and legible.

Condition Observations

Toning

- Heavy brown Golden Age toning across entire page.

- Strong darkening along the top edge and inner gutter.

Edges

- Left edge heavily darkened; lightly brittle in appearance but stable.
- Right edge shows slight waviness but no tearing.

Corners

- Upper-left: Rounded with noticeable creasing.
- Other corners: Rounded and worn but intact.

Surface

- Clean interior artwork; no stains, smudges, ink transfer, or writing.
- Paper grain visible from age but surface remains smooth.

Binding

- Inner gutter fully intact with no tearing or separation.
- No staple pull or structural stress visible from this angle.

Print Quality

- Line art sharp and consistent.
- No misprints, smears, or registration issues.

Overall Inside Front Cover Impression

A solid inside-front gag page with heavy but uniform aging. Artwork is fully intact with no structural damage, maintaining strong clarity and clean presentation despite Golden Age toning.

Centerfold Observations

Marge's Little Lulu Vol. 1 No. 31 - January 1951



Overall Setting & Layout

A full-color **two-page story sequence** with a vertical-panel arrangement. The left page continues a chase and group interaction story, while the right page begins the titled feature **"Little Lulu — CRY BABY."** The centerfold gutter is intact with no detachment, and both pages show uniform Golden Age toning.

Left Page Observations

Panel Content & Narrative Flow

- **Top left panel:**
A figure opens a door while another figure outside lunges forward, arms extended toward the first as speech balloons indicate pursuit ("C'mere, you!").
- **Second panel:**
The figure inside flees across an interior floor toward an exit, followed by the pursuer.
- **Third panel:**
A small figure runs outside in the snow, footprints emphasized with curved motion lines.
- **Fourth panel:**
A larger group gathers, one speaking and gesturing toward a safety pin while others stand around.
- **Fifth panel:**
The group begins some coordinated action, shown by clustered figures in discussion.
- **Bottom panels:**
Characters sit in a group circle indoors, one reading aloud, while others gather around in a storytelling or activity setting.

Background Elements

- Indoor walls and doorframes with heavy black outlines.
- Snow-covered ground outdoors near brick surfaces.
- Group scene with a low table or gathering area.

Condition Observations

- **Toning:** Heavy brown toning throughout; darker along the gutter and bottom margin.
- **Edges:** Intact; no chips or tears.
- **Corners:** Rounded but stable.
- **Surface:** Clean print; no staining or pencil/pen marks.
- **Color:** Bold and consistent; reds, blues, and yellows remain vivid.

Right Page Observations (Story Title Page)

Header & Title

- Large stylized title: **"Little Lulu — CRY BABY"**
- The title appears on a pale background above the first row of panels.

Panel Content & Narrative Flow

- **Top row:**
A small figure stands behind wooden stair railings addressing another figure off-panel, asking to go outside. A speech balloon denies permission ("You're to stay in your room the rest of the day!").
- **Second row:**
The child begins to cry dramatically, emphasized by oversized red lettering: **"BAW!"**
- **Third row:**
The child continues crying at the base of the stairs, now outdoors or in a porch-like space, shown shouting **"WAH!"** while holding the railing.
- A small bubble "Sniff..." appears as the child regains composure before continuing the crying sequence.
- A final expression with "?" indicates a pause or response to an unexpected reaction off-panel.

Background Elements

- Indoor stair landing with golden-brown slats.
- Exterior walkway with blue shading.
- Purple-toned wall and floor shadows.

Condition Observations

- **Toning:** Heavy and even; deeper browning along the top and gutter edges.
- **Edges:** Slight waviness; no tears or chips.
- **Corners:** Rounded but fully intact.
- **Surface:** No moisture marks, stains, foxing, or writing.
- **Color:** Very strong saturation, especially in reds, blues, and large "crying" lettering.

Overall Centerfold Impression


A structurally strong centerfold with:

- Fully attached pages
- Strong, clean color
- Heavy but typical Golden Age toning
- No tears, stains, writing, or water damage
- Crisp linework and intact panel registration

A solid mid-grade example with excellent visual presentation.

Inside Pages Observations

Marge's Little Lulu Vol. 1 No. 31 - January 1951

 Inside Page 1 (IMG_0871.jpeg)



Overall Setting & Layout

A half-page concluding story sequence followed by a full-width **subscription form**. The upper portion contains four rectangular panels depicting characters engaged in a chase and rescue scene on floating ice platforms. The lower section presents a Dell subscription advertisement and cut-out form.

Panel Content Highlights

- A group of figures rushes onto the scene, exclaiming they've found "the big B!"
- A character is lifted or assisted by others in the group.
- A sudden chase takes place — characters jump across floating ice, shouting "YAAAA! GET HIM!"
- Final panel shows all characters stranded on the ice block, expressing confusion about what to do next. A yellow "**THE END**" box sits at bottom-right.

Subscription Section

- Prominent "**Free!**" text describes bonus items with a *Little Lulu* subscription.
- Form includes lines for subscription length, payment, and mailing address.
- Also lists the Dell Comics Club membership card and picture premiums.

Condition Observations

- **Toning:** Heavy, with deeper browning along lower margin.
 - **Edges:** Clean, no tears; slight roughness bottom-left.
 - **Corners:** Rounded and worn.
 - **Surface:** Clean; no markings, stains, or warping.
 - **Color:** Strong and stable in all comic panels.
-

📄 Inside Page 2 (IMG_0873.jpeg)



Overall Setting & Layout

A nine-panel, full-color schoolroom sequence featuring a child managing a conflict between winning money and commitments to share.

Panel Content Highlights

- A teacher instructs a child to take her seat after the child promises to place funds “in my piggy bank.”
- The child worries that classmates will expect her to share winnings.
- Highlights include dramatic facial reactions, hallway runs, and anxious pacing.
- The tension centers around a group of boys waiting after school.
- Final panel shows the character exiting the building, glancing cautiously.

Background Elements

- Classroom desks, chalkboard, doorframes.
- Hallway and stairwell areas with simple architectural outlines.

Condition Observations

- **Toning:** Heavy and even.
 - **Edges:** Smooth; no chips.
 - **Corners:** Rounded, slightly softened.
 - **Surface:** Clean, no writing or stains.
 - **Color:** Bright and well-preserved.
-

📄 Inside Page 3 (IMG_0874.jpeg)



Overall Setting & Layout

A title page introducing a story called "Little Lulu — ADVENTURES IN AFRICA." Panels emphasize a playful visual gag involving bucket-based cleaning that escalates comically.

Panel Content Highlights

- Child carries a bucket and mop, sweeping water across the floor.
- The character tips over a chair, rearranges it, then continues spreading water.
- Water spreads through the room, forming a long puddle.
- Final panel shows the child resting on a chair, appearing to wait after finishing the cleaning setup.

Background Elements

- Blue doorframe and wall trim.
- Chairs, doorway, and wooden flooring.

Condition Observations

- **Toning:** Heavy across all panels.
 - **Edges:** Clean outer edge, slight waviness.
 - **Corners:** Rounded, intact.
 - **Surface:** No stains or foxing; artwork clean.
 - **Color:** Excellent saturation; no fading.
-

Inside Page 4 (IMG_0875.jpeg)

Overall Setting & Layout

The title page to “**Little Lulu — CRY BABY.**” The story depicts a child being reprimanded and reacting with escalating wailing across panels.

Panel Content Highlights

- Adult figure instructs the child to go to her room for misbehavior.
- Child produces large red stylized sobbing text: “**BAW!**”, “**WAAAAAHHH!**”, “**WAH!**”
- Stair railings, room doorway, and character positioning emphasize isolation and emotional outburst.
- Adult repeatedly instructs child to close the door.

Background Elements

- Staircase with warm-toned railings.
- Exterior walkway or landing area.
- Indigo and lavender shading behind character silhouettes.

Condition Observations

- **Toning:** Strong and even, darker at top and gutter.
 - **Edges:** Clean; slight waviness.
 - **Corners:** Rounded but intact.
 - **Surface:** No writing or stains.
 - **Color:** Very strong saturation, especially in the large cry-sound lettering.
-

Inside Page 5 (IMG_0876.jpeg)

Overall Setting & Layout

A nine-panel birthday-themed story page introducing a character celebrating a birthday and anticipating games at a party.

Panel Content Highlights

- Child announces “Today is my birthday!”
- Enthusiastic scenes of planning games, washing face in preparation.
- Character notes there will be “nothin’ but kissin’ games,” excitedly anticipating the event.
- Outdoor and indoor environments vary by panel, including sinks, rooms, and windows.

Background Elements

- Bathroom sink and mirror.
- Interior wall lines, doorframes.
- Outdoor light through windows.

Condition Observations

- **Toning:** Heavy typical Golden Age toning.

- **Edges:** Stable; no chips.
 - **Corners:** Rounded, mild wear.
 - **Surface:** Clean; no pen or pencil.
 - **Color:** Rich hues; excellent retention.
-

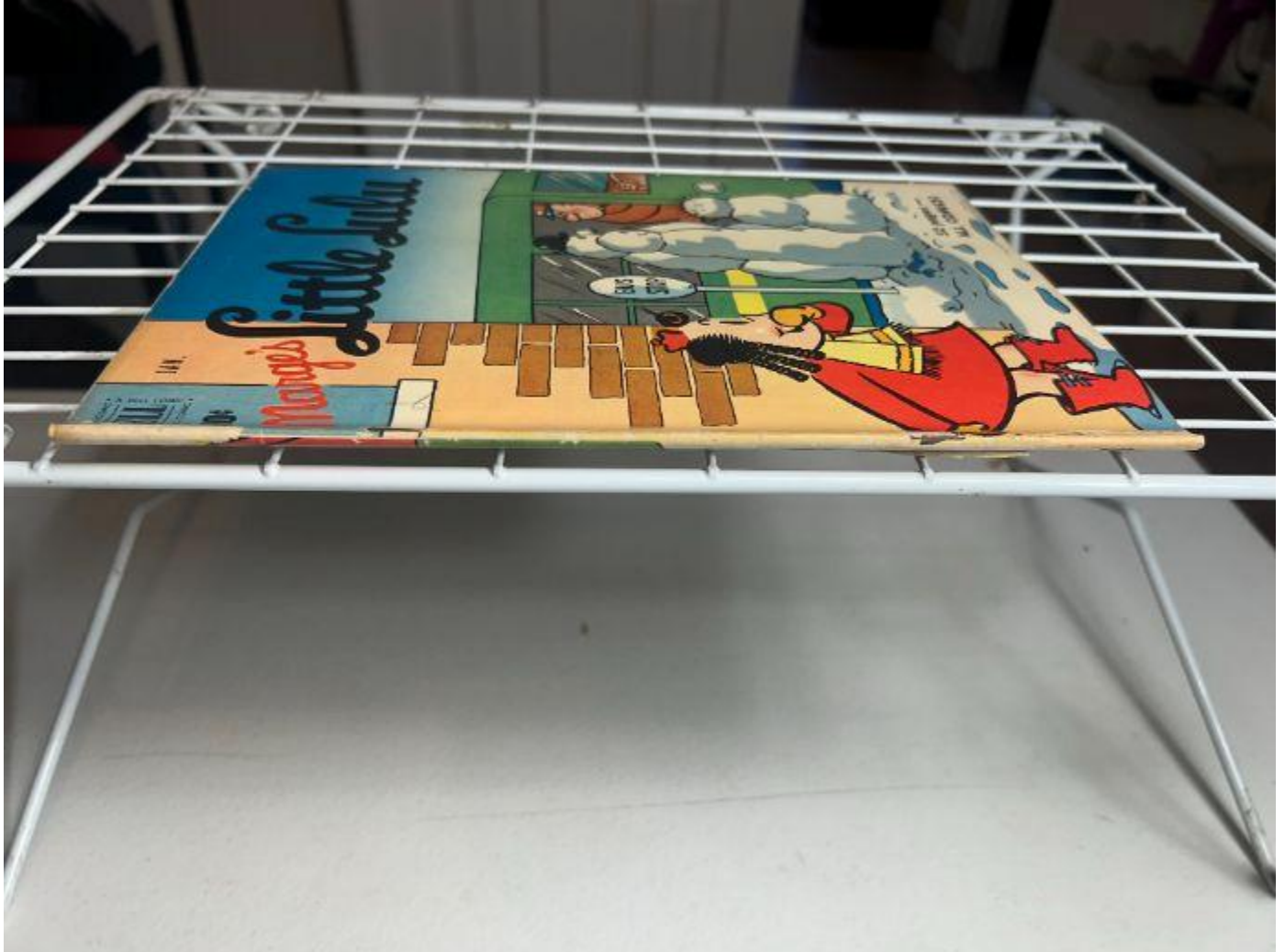
Overall Inside Pages Impression

All inside pages show:

- Heavy but consistent Golden Age toning
 - Strong, clear printing and color saturation
 - Clean surfaces with **no stains, writing, or moisture damage**
 - Tight gutters and structurally sound attachment
 - Rounded but intact corners
 - Typical mid-grade wear consistent with early 1950s Dell comics
-

Spine Observations

Marge's Little Lulu Vol. 1 No. 31 – January 1951



Overall Setting

The comic is placed horizontally on a white wire rack, photographed from a low left-side angle. This view provides a clear look at the spine edge, the curve of the book, and the condition of both spine ends.

Spine Shape & Roll

- A **moderate forward spine roll** is visible, causing the front cover to tilt downward toward the viewer.
 - The roll extends the entire length of the spine and is smooth rather than sharply creased.
 - The back cover lies noticeably flatter, consistent with handling-based roll toward the front.
-

Spine Surface Condition

- Multiple **vertical color-break lines** appear along the length of the spine fold.
 - The printed color layer shows **rubbing and thinning**, especially near mid-spine.
 - Small **paper chips** and loss spots are visible near the top and bottom areas.
 - The spine pattern (Dell branding strip) shows fading and general age wear.
-

Staple Region (General View)

- Staple impressions are slightly raised beneath the cover surface.
 - No staple popping or protrusion is visible from this angle.
 - The surrounding paper shows mild distortion, consistent with age and repeated opening/closing.
-

Spine Ends

- **Top spine end:** Rounded, with small chips and light fraying.
 - **Bottom spine end:** More compressed, with visible flattening but no splitting.
-

Cover Alignment & Lift

- The front cover lifts noticeably due to the spine roll.
 - Alignment at the bottom edge slopes downward toward the right side.
 - The cover remains attached and lies flat against the rack with no severe bulging.
-

Structural Integrity

- No visible spine splits at either end.
 - Cover remains firmly attached along the spine despite cosmetic wear.
 - Paper fibers show aging but remain intact overall.
-

Overall Spine Impression

A stable but **moderately rolled** spine with typical Golden Age wear: color breaks, abrasion, and slight material loss at the ends. Despite the cosmetic defects, the spine retains good structural strength and shows no detachment or splitting.

Staples Observations

Marge's Little Lulu Vol. 1 No. 31 – January 1951

Upper Staple (IMG_0879.jpeg)



Metal Condition

- The staple shows **moderate oxidation**, visible as a darkened, slightly roughened metal surface.
- No active rust flaking or red residue is present.
- The staple crown remains **straight**, not bent or lifted.

Surrounding Paper Condition

- **Significant material loss** surrounds the staple entry area.
A large patch of cover stock is missing, exposing beige inner fibers.
- The printed red artwork above the staple shows **severe color loss** along the break line.
- The bottom of the staple opening shows **compressed paper fibers** and fraying.
- A horizontal abrasion line runs partially beneath the staple, indicating friction over time.

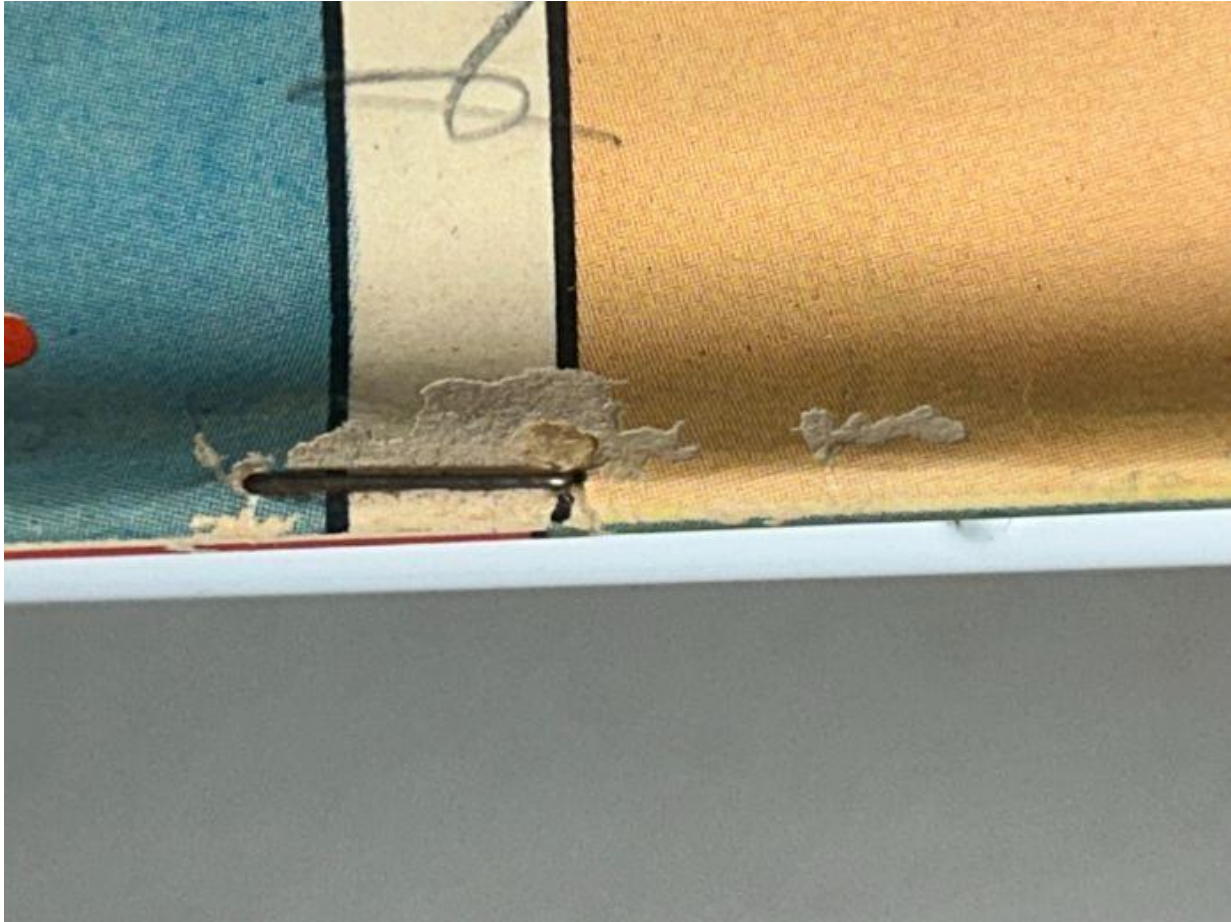
Tears, Cracks & Fiber Lift

- A shallow **horizontal tear** is visible at the upper edge of the staple hole.
- Considerable **fiber lift** along all sides of the staple cavity.
- Multiple flakes and loose paper fragments visible around the damage site.

Structural Integrity

- Despite the heavy cosmetic damage, the staple appears to **remain firmly seated**.
 - No indication of looseness or page detachment from this close-up.
-

Lower Staple (IMG_0878.jpeg)



Metal Condition

- The staple shows **light-to-moderate oxidation**, slightly less severe than the upper staple.
- Metal is intact and fully seated; no lifting of the legs.

Surrounding Paper Condition

- **Large areas of missing cover stock**—one of the more severe staple-zone losses seen in this run.
The cover layer is torn away on both sides of the staple.
- The torn region extends beyond the staple cavity, showing:
 - Exposed tan fiber layer
 - Flaking fragments
 - Rough edge contour indicating repeated stress or abrasion

Tears, Cracks & Fiber Lift

- A **horizontal tear** extends outward from the staple hole.
- Paper fibers around the staple exhibit **heavy lifting and shredding**.
- Ink loss is extensive; the area around the staple is nearly fully devoid of original color layer.

Structural Integrity

- Even with extensive material loss, the staple remains **structurally functional**.
- No evidence of cover detachment or staple popping.
- Damage is **highly cosmetic**, but not yet structurally catastrophic.

Overall Staple Impression

Both staples are **structurally holding**, but the **paper around them is heavily damaged**:

- Severe cover-layer loss
- Multiple tears and exposed fiber regions
- Moderate oxidation
- color-break fracturing around staple holes
- No detachment, no loose staple legs

These are **major grade-impacting defects** for both the Golden Age and 100-Point evaluations.

Brittleness Test Observations

Marge's Little Lulu Vol. 1 No. 31 – January 1951



Overall Bend Behavior

- The lifted page forms a **smooth, even curve** without showing any signs of snapping, cracking, or stiff resistance.
- The sheet flexes naturally and returns toward flat alignment when released, indicating retained elasticity.

Edges & Fibers

- Outer edge displays **deep Golden Age toning**, moving into a rich brown typical of early 1951 Dell newsprint.
- Despite the heavy oxidation, **paper fibers remain cohesive**—no powdering, crumbling, or edge fragmentation is visible.
- No fiber splitting along the fold line.

Surface & Color Layer Response

- Color layer bends cleanly with **no color-break cracking** in the printed panel.
- No new crease lines form while the page is lifted.
- The underlying page shows identical toning and stable structure.

Structural Integrity

- No small tears appear at the bend point or along the edge.
- The page layers remain unified with no delamination.
- The test shows no sign of dryness fracture, even near the corner where brittleness would first appear.

Brittleness Rating: 8 / 10 — aged but flexible

Paper is heavily toned but retains very solid flexibility for a 1951 interior sheet.