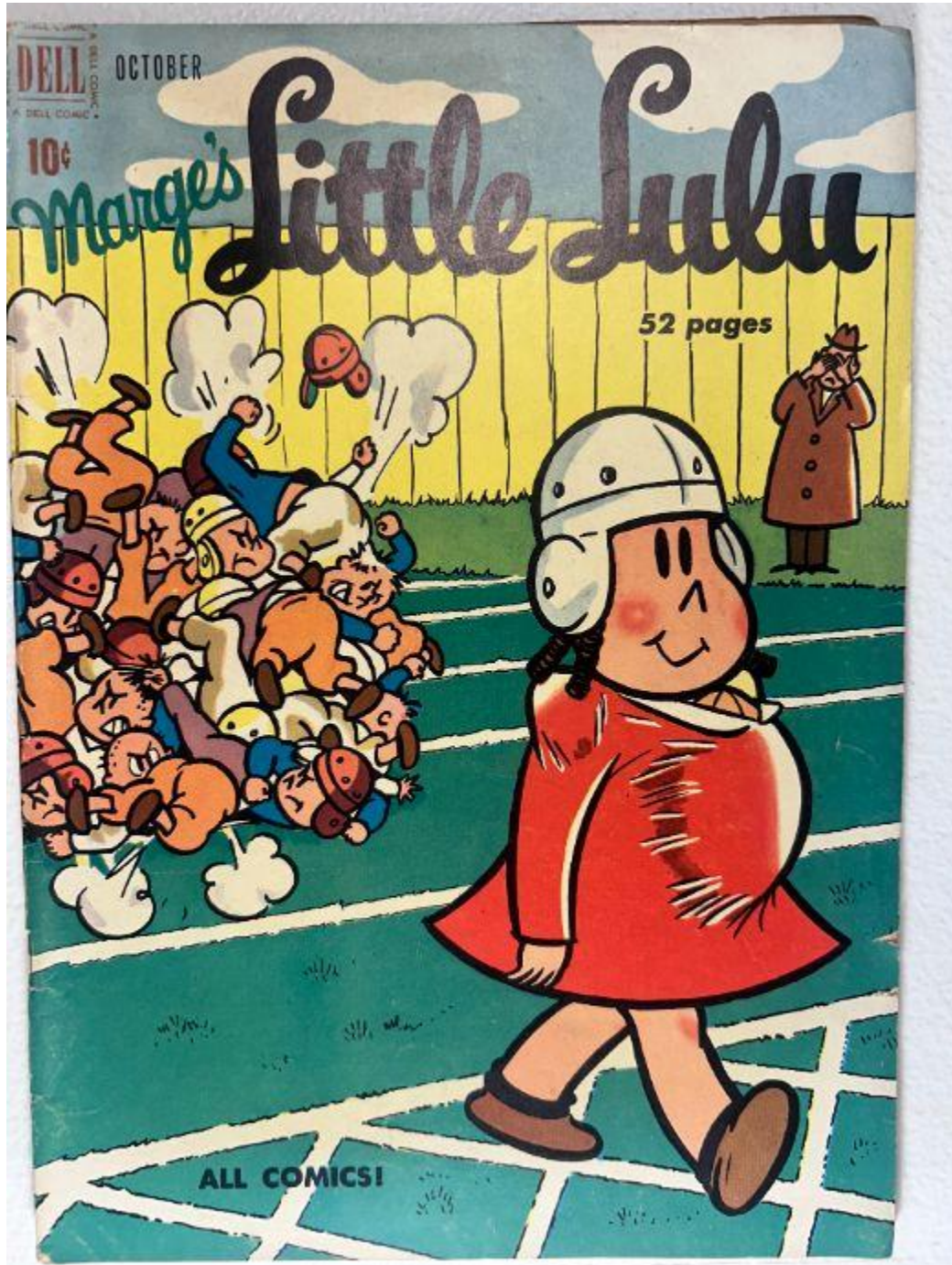


Marge's Little Lulu Vol. 1 No. 28 – October 1950

Front Cover Observations



## Overall Setting & Layout

The image shows the full front cover of *Marge's Little Lulu Vol. 1 No. 28*. The artwork depicts a humorous football-field scene with a large central figure walking confidently in the foreground wearing a helmet and red garment. Behind this figure, a chaotic pile-up of football players is shown mid-collision. The background includes a tall yellow fence and cloudy sky. A coat-wearing observer stands to the right, holding an item near their face.

## Foreground Elements

- A single figure dominates the right lower half of the cover, walking with head slightly turned.
- The figure wears a white football helmet with black dots, a red dress with heavy scuffing/abrasion depicted as artistic distress marks, and simple brown shoes.
- The character's posture suggests calm movement across a football field grid.

## Background Elements

- A massive pile-up of football players occupies the left side:
  - Multiple players in varied uniforms (orange, blue, brown tones) tumble together.
  - Several helmets fly upward, illustrated with motion clouds and arcs.
- A tall yellow vertical-slat fence spans the entire width behind the action.
- A figure in a long brown coat stands behind the central character, positioned near midfield.
- Thick white clouds are drawn above the fence line, partly obscuring the sky.
- The field has clearly illustrated yard-line striping in a grid pattern.

## Visible Text

- Top left corner: **"DELL COMIC"** logo with price **10¢**
- Above the logo: **"OCTOBER"**
- Main title: **"Marge's Little Lulu"** in stylized red and dark-blue lettering
- Mid-right: **"52 pages"**
- Bottom left: **"ALL COMICS!"**

All text is fully legible and cleanly printed.

## Spine Area

- Left spine shows light wear with visible rounding near top and lower edges.
- Color breaks visible along the fold, though overall intact.
- No major splits or paper loss visible from the front-facing view.

# Condition Observations

## Corners

- **Top right:** Rounded with mild abrasion.
- **Top left:** Slight rounding and softening.
- **Bottom corners:** Rounded but intact, no material loss.

## Edges

- Right edge: Mild abrasion; generally smooth.
- Top edge: Light wear, slight darkening.
- Bottom edge: Very slight soiling.

## Surface Wear

- The most noticeable surface wear is shown as printed scuffing on the red garment (part of the original artwork).
- Actual physical cover surface shows minor handling lines along the right and bottom areas.
- No staining, writing, or moisture exposure visible.

## Color & Print Quality

- Very strong saturation throughout: bright reds, blues, yellows, greens.
- Black outlines crisp and sharp.
- No fading or misregistration is visible.

## Structural Integrity

- No tears, punctures, or creases breaking color.
- Paper exhibits light vintage toning but holds shape well.

## Overall Front Cover Impression

Bright, clean, and visually appealing with excellent color strength. Wear is mild and contained mostly to spine rounding and light edge abrasion. A solid, attractive Golden Age cover consistent with a mid-grade example.

---

# ☑ Back Cover Observations

☑ Marge's Little Lulu Vol. 1 No. 28 – October 1950



I JUST LOVE TO  
MAIL ALL MY  
FRIENDS A  
**FREE GIFT**  
*Little Lulu*

*Marge's Little Lulu comics*  
Dear Friends:

We just posed for five of the cutest pictures and I want to send a set of them to all the boys and girls who read this magazine.

The pictures are a scream! They are the funniest of the gang that I have ever seen. Your set will not cost you a single penny. It comes to you **FREE** with a subscription to **LITTLE LULU Comics**. You will receive 12 big issues for only \$1.00.

Goodbye now until next month. Tubby and I will be looking for you!

Like millions of boys and girls who read **DELL COMICS** every month, I hope you got a lot of fun out of this issue of **LITTLE LULU**.

No matter what Tubby and his gang may be up to, she has always had something up her sleeve to out-smart them. She always has the last laugh! You just can't put anything over on Little Lulu!

Don't miss the adventures of Little Lulu and Tubby and their friends during the coming year. Every issue will be packed with loads of fun and side-splitting laughs. And, of course, we know you will get a great kick out of reading Little Lulu's "DIRTY" and other exciting short features every month.

To make sure that you will not miss a single issue, mail subscription form on other side of this page right now. Saves you money. You get 12 big issues for only \$1.00.

*Little Lulu*

KIDS! SUPPLY OF THESE BEAUTIFUL PICTURES IS LIMITED. BETTER HURRY AND SEND FOR YOUR SET RIGHT AWAY, BEFORE THEY'RE ALL GONE!



**5** 6½" x 7¾" full color illustrations of Little Lulu and her friends **FREE**

Be the first to get your set of pictures. RUSH BACK FORM ON OTHER SIDE TODAY.

1 yr. 12 issues	\$1.00
2 yrs. 24 issues	1.85
3 yrs. 36 issues	2.70



## Overall Setting & Layout

The back cover is a full-page promotional advertisement dominated by bold primary colors (yellow, red, green, black). It follows the classic **Dell "Free Gift" Little Lulu** subscription-style design used across early 1950s issues.

The layout includes:

- A large illustrated character mailing a letter into a **green U.S. MAIL** box
- A black angled text-panel announcing a **FREE GIFT**
- A detailed letter addressed "Dear Friends"
- A right-column paragraph promoting Dell Comics
- A pricing subscription section
- A bottom strip with **5 full-color Little Lulu illustrations**
- A cartoon spokesperson pointing to the subscription deals
- A character holding a Little Lulu comic in the lower right

---

## Foreground Elements

- A character holds a letter raised overhead and reaches toward a green mailbox labeled "**U.S. MAIL.**"
- A large angled black rectangle displays:  
**"I JUST LOVE TO MAIL ALL MY FRIENDS A FREE GIFT — Little Lulu"**
- A note or letter graphic addressed to readers appears below, with handwritten-style signature.
- A character pointing upward announces the scarcity of the "beautiful pictures," encouraging quick ordering.
- Another character on the bottom right holds an open comic book.

---

## Primary Text Elements

### Offer Headline

- *I JUST LOVE TO MAIL ALL MY FRIENDS A FREE GIFT — Little Lulu*

### Letter Block

- Introduction to “Marge’s Little Lulu comics”
- Commentary about new posed photos and free pictures
- Signature: “Little Lulu”

## Promotional Paragraph

Discusses:

- How boys and girls enjoy Dell Comics
- The humor of Lulu and Tubby stories
- The fun and comedy of the monthly comic
- The “DIRY” (diary) page
- A nudge to subscribe using the coupon on the opposite side

## Subscription Prices

- **1 yr., 12 issues — \$1.00**
- **2 yrs., 24 issues — \$1.85**
- **3 yrs., 36 issues — \$2.70**

## Bottom Strip

“5 full color illustrations ... FREE”

---

## Illustrated Panels (Bottom Section)

Five small color illustrations showing characters in various poses, arranged horizontally. These represent the free collectible pictures referenced in the offer.

---

## Condition Observations

### Toning

- Moderate age toning over the full page.
- Slight darkening at upper edge and left margin.

### Corners

- **Top left:** Rounded with light wear.
- **Top right:** Softened; mild abrasion.
- **Bottom corners:** Moderately worn but intact.

## Edges

- **Left edge:** Slightly toned with small rub marks near spine.
- **Right edge:** Clean with minimal wear.
- **Bottom edge:** Light scuffing.

## Surface

- General light scuffing throughout but no color loss.
- No staining, moisture ripples, foxing, or writing.
- All ink is intact.

## Color & Print Quality

- Excellent saturation in yellows, reds, greens, and blacks.
- Lettering is crisp.
- No fading detected.

## Structural Integrity

- Flat, stable paper.
- No tears.
- No missing pieces.
- No dents or impressions.

---

## Overall Back Cover Impression

A clean, bright advertisement page with strong color preservation and no structural flaws. Wear is limited to natural Golden Age toning and corner softening. An above-average example for a 1950 issue.

---

# ☑ Inside Front Cover Observations

☑ *Marge's Little Lulu Vol. 1 No. 28 – October 1950*



MARGE'S LITTLE LULU, Vol. 1, No. 28, October, 1950. Published monthly by Dell Publishing Co., Inc., 261 Fifth Ave., New York 16, N. Y. George T. DeLoach, Jr., President; Helen Sawyer, Vice-President; Albert P. DeLoach, Vice-President. (Reinstated as second-class matter December 15, 1948 at the Post Office at New York, N. Y. under the Act of March 3, 1879. Subscriptions in U.S.A., \$1.00 per year; single copies, 10 cents; foreign subscriptions, \$2.00 per year; no Canadian subscriptions accepted. Copyright, 1950, by Marge H. Bush. Printed in U.S.A. Designed and prepared by Western Printing & Lithographing Co.

**CHANGES OF ADDRESS** should reach us two weeks in advance of the next issue date. Give both your old and new address enclosing if possible your old address label.

# Overall Setting & Layout

A full **9-panel black-and-white gag strip** titled **"LULU"** printed on heavily toned interior newsprint. The panels are arranged in a uniform **3 × 3 grid**, following Lulu through a sequence of mischievous or playful interactions involving posters, an advertisement wall, an aquarium, and several expressive fish.

A complete **publication block** appears along the bottom margin confirming:  
*"Marge's Little Lulu, Vol. 1, No. 28, October 1950."*

---

## Panel-by-Panel Content Description

### Top Row (3 panels)

- **Panel 1:**  
Lulu walks left along a wooden fence with visible vertical lines.
- **Panel 2:**  
Lulu pastes or interacts with a poster reading:  
**"VOTE FOR HONEST BILL BALLOT."**
- **Panel 3:**  
Lulu steps back from the same poster, hands behind back, evaluating the placement.

### Middle Row (3 panels)

- **Panel 4:**  
Lulu passes a new sign displaying:  
**"FOR A PERFECT SUN TAN USE LARDO."**  
A figure in swimwear is pictured on the sign.
- **Panel 5:**  
Lulu walks away from the sign, hands clasped behind back.
- **Panel 6:**  
Lulu glances again at the advertisement from a distance.

### Bottom Row (3 panels)

- **Panel 7:**  
Lulu approaches a facility marked **"AQUARIUM"** with double doors.
- **Panel 8:**  
Lulu views large fish through a tank window, including an expressive large fish with pronounced lips and an eye ring.

- **Panel 9:**

Lulu continues watching as multiple fish press close to the glass; a staff member or adult figure walks into frame on the right.

---

## Background Elements

- Vertical-board wooden fence
  - Advertisement posters with bold lettering and simple illustrations
  - Brick or tile patterns on the aquarium façade
  - Interior tank background suggesting water depth and aquatic environment
- 

## Publication Block (Bottom Margin)

The bottom text includes:

- Title and issue number
  - Publication statement
  - Publisher's address
  - Printing location
  - Subscription and "**CHANGES OF ADDRESS**" guidelines
- All text is intact and fully legible.
- 

## Condition Observations

### Toning

- Heavy, even Golden Age toning across entire page.
- A pronounced **diagonal darkened band** extends across the upper central area.
- Left edge shows significant deep brown oxidation.

### Edges

- Left edge: darkened, slightly brittle in appearance but not fragmented.
- Right edge: mild waviness from age, no tearing.

## Corners

- **Upper-left:** rounded with creasing and darkening.
- **Upper-right:** softened with moderate toning.
- **Lower corners:** rounded but structurally sound.

## Surface

- Clean interior artwork with **no stains, foxing, writing, or moisture marks.**
- No smearing of ink or handling grime beyond natural paper aging.

## Binding

- Inner gutter shows **tight attachment**, no tears or pull-through around the staple area.

## Print Quality

- Line art is crisp.
- Shading consistent; no misregistration.
- Poster lettering clearly reproduced.

---

## Overall Inside Front Cover Impression

A clean, structurally intact interior page displaying heavy but typical 1950 toning. No writing, stains, or structural damage. Print quality strong. A well-preserved example for its age.

---

# ☑ Centerfold Observations

☑ Marge's Little Lulu Vol. 1 No. 28 – October 1950



# Overall Setting & Layout

A two-page interior story sequence printed in full color. Panels are arranged in a **three-row vertical layout** across both pages, following a comedic narrative involving a child figure, a shadow, a sewing spool, and interactions on sidewalks, inside storefronts, and among other characters.

Both pages show consistent color saturation, clear black outlines, and heavy Golden Age toning.

---

## Left Page Observations

### Panel Content & Narrative Flow

- **Top row:**
  - A figure walks toward another standing near a shaded doorway.
  - Conversation begins about someone being a “stoop.”
  - Dialogue escalates into an argument with large, bold speech balloon lettering.
- **Middle row:**
  - The central figure interacts dramatically, leaning close to another child.
  - The argument intensifies through repeated statements: “I WILL NOT!!” / “YOU WILL TOO!!”
  - A cardboard carton or crate appears behind them marked with a large “S.”
- **Bottom row:**
  - A scene about shadows begins—one figure inspects a long black shape cast across the ground.
  - The figure steps back, commenting on the shadow.
  - Another character approaches, surprised at how “cute” the shadow is.

### Background Elements

- Residential walkway with green grass and wooden fence panels.
- Indoor hallway with a blue door in opening panels.
- Yellow flat background in shadow-focused panel.
- A counter or low furniture piece appears in the final left-page panel.

### Condition Observations

- **Toning:** Heavy throughout, strongest at the gutter and outer edges.
- **Corners:** Rounded; lower corners show mild wear.
- **Edges:** Clean outer edge; no chips or tears.
- **Surface:** No staining or writing; small age speckles only.

- **Color:** Full saturation; reds, yellows, blues, and flesh tones are bright.
- 

## Right Page Observations

### Panel Content & Narrative Flow

- **Top row:**
  - The child names the shadow and leads it along a walkway.
  - Speech balloons show dialogue about retrieving thread and making a new head for a doll.
  - Figures pass storefront windows with multiple adults visible inside.
- **Middle row:**
  - The child attempts to guide the shadow toward a counter area.
  - Several adults cluster around with noticeable curiosity.
  - A line of feet in high-heeled shoes is shown, forming a border of observers.
- **Bottom row:**
  - Characters comment on the mysterious behavior of the shadow.
  - The shadow follows the child; dialogue notes the shadow “always being there.”
  - A final scene shows the child addressing another figure who is reacting with surprise.

### Background Elements

- Storefront glass panes showing reflected figures.
- Light brown tiled floors and pastel walls.
- Long counter area with crowds of onlookers.
- Minimal horizon detail; focus on characters and shadow.

### Condition Observations

- **Toning:** Heavy brown age toning, with darker concentration along the gutter.
  - **Edges:** Slight waviness, otherwise intact.
  - **Corners:** Rounded; lower-right corner lightly softened.
  - **Surface:** Clean; no foxing, moisture rippling, or marks.
  - **Color:** Excellent saturation throughout; no fading or ink lift.
-

## **Overall Centerfold Impression**

A fully intact, well-printed centerfold with strong color fidelity and clean surfaces. Panels show no tears, stains, writing, or moisture intrusion. Heavy but typical Golden Age toning is present throughout. Excellent structural preservation with tight gutter and no detachment.

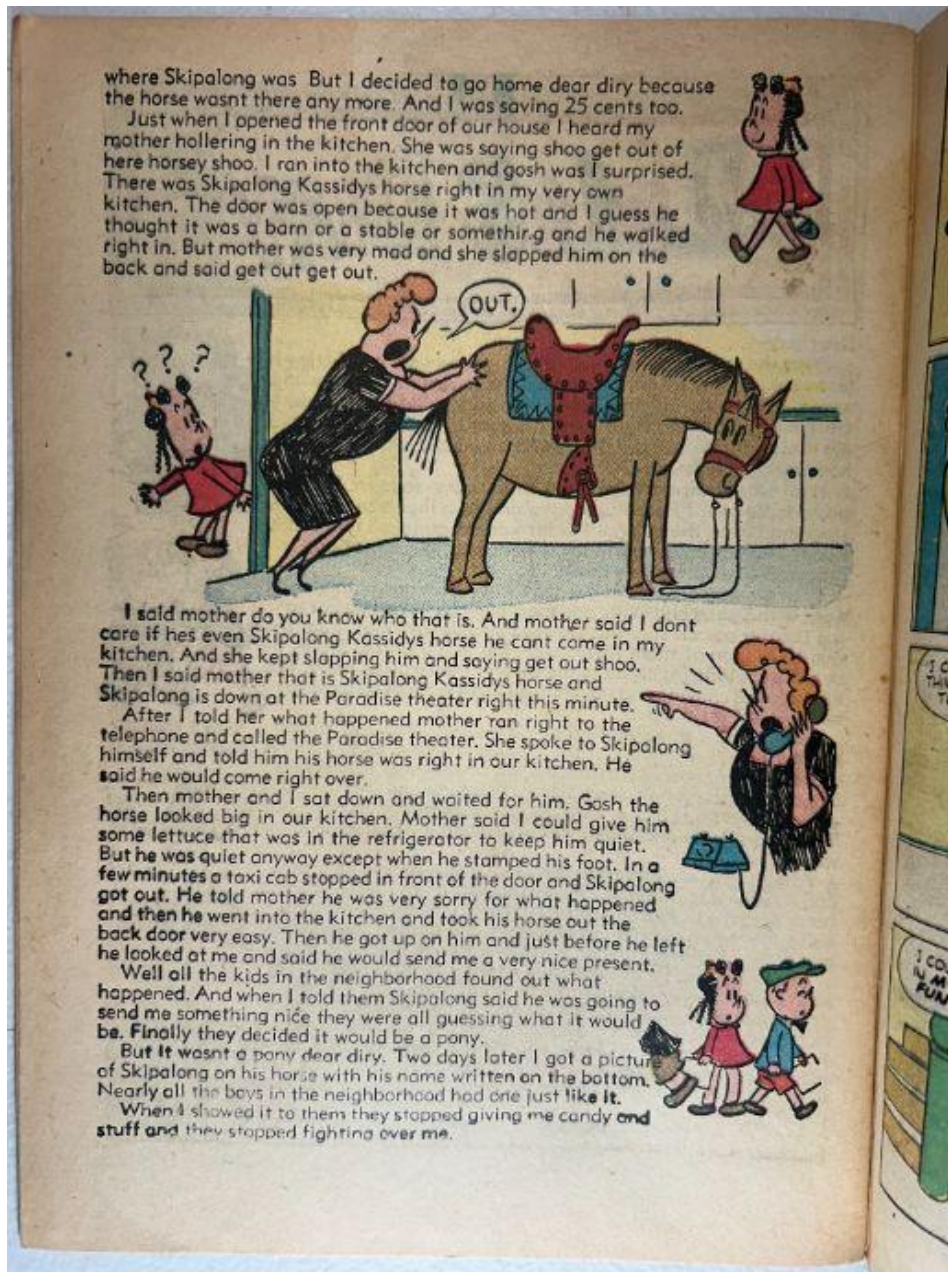
---

## ☑ Inside Pages Observations

☑ *Marge's Little Lulu Vol. 1 No. 28 – October 1950*

(You uploaded **four** inside-page images. Observations follow in order.)

### 📄 Inside Page 1 (IMG\_0859.jpeg)



## Overall Setting & Layout

A full-page prose story accompanied by two large illustrations. The page contains continuous text describing a humorous misadventure involving a horse in a kitchen and interactions with various characters. Illustrations at the top and mid-page show dynamic cartoon movement.

## Illustration Details

- **Upper illustration:**  
A person pushes a saddled horse out of a kitchen doorway. Another smaller figure stands behind, reacting with visible surprise.
- **Lower illustration:**  
A person gestures emphatically while another character stands to the right in a dress. A horse appears in the background.

## Text Block

Large, dense prose text with no paneling. Describes mother, a character named "Skipalong Cassidy," a mistaken entry into a kitchen, and a comedic chain of events.

## Condition Observations

- **Toning:** Very heavy brown toning throughout, deeper at edges and gutter.
  - **Edges:** Smooth but darkened; no tearing.
  - **Corners:** Rounded with mild creasing.
  - **Surface:** Clean; no stains or markings.
  - **Color:** Illustrations bright and fully intact.
-

📄 Inside Page 2 (IMG\_0861.jpeg)



### Overall Setting & Layout

A nine-panel full-color story page following a character reacting to a damaged item (likely a hat) and searching the house for materials to repair or recreate it.

## Panel Highlights

- Character expresses distress over something being “chewed to pieces.”
- Runs indoors seeking materials.
- Searches upstairs hallway and sewing basket.
- Considers glue, rice, and other items for crafting.
- Final panel shows a small box and vase of flowers, with the character relieved to have more time before mother returns.

## Background Elements

- Stairway with green flooring.
- Dresser with drawers and framed wall hanging.
- Simple domestic interiors.

## Condition Observations

- **Toning:** Heavy overall with darker edge toning.
  - **Edges:** Intact; no chips.
  - **Corners:** Rounded and worn.
  - **Surface:** Clean and undamaged.
  - **Color:** Strong saturation; blues, reds, and yellows vivid.
- 

## Inside Page 3 (IMG\_0862.jpeg)

### Overall Setting & Layout

A nine-panel sequence repeating part of the centerfold shadow storyline.

### Panel Highlights

- Characters argue in early panels about being called a “stoop.”
- Large expressive shouting balloons: “YOU!” “I WILL NOT!!” “YOU WILL TOO!!”
- A figure explains how another child “lost her shadow.”
- Character tests various ways of observing the shadow and finds it “cute.”
- Concludes with commentary about the shadow always being present when needed.

### Background Elements

- Indoor area with crates labeled “SOAP” and “SUGAR.”

- Yellow wall with brick detail.
- Outdoor sidewalk and grass.

## Condition Observations

- **Toning:** Heavy throughout; darker near bottom edge.
  - **Edges:** Clean and stable.
  - **Corners:** Rounded; slight softening.
  - **Surface:** No stains or pencil/pen marks.
  - **Color:** Solid, well-preserved.
- 

## Inside Page 4 (IMG\_0863.jpeg)

### Overall Setting & Layout

A six-panel full-color story page beginning a conversation between two characters about neighborhood boys planning to run away from home.

### Panel Highlights

- Character runs in saying “I got some big news!”
- News delivered: “All the boys are going to run away from home — all together!”
- Dialogue covers: school start, a truant officer, and avoiding trouble.
- Closing panels show characters walking under a tree discussing wanting boys in their class.

### Background Elements

- Large tree, grass areas, wooden posts.
- Simple outdoor neighborhood landscape.

### Condition Observations

- **Toning:** Heavy tan/brown aging; darkest along gutter.
  - **Edges:** Slight waviness; intact.
  - **Corners:** Rounded but undamaged.
  - **Surface:** Clean; no smudges, stains, or marks.
  - **Color:** Very strong with deep reds and greens.
-

## Overall Inside Pages Impression

Across all pages:

- Heavy but typical 1950 Golden Age toning
- Strong color fidelity
- No tears, chips, stains, writing, or moisture exposure
- Tight binding, no gutter splits
- Rounded but intact corners

---

## Spine Observations

*Marge's Little Lulu Vol. 1 No. 28 – October 1950*



## Overall Setting

The comic is positioned horizontally on a white wire rack, captured from a low side-profile angle. This angle clearly exposes the shape of the spine, curvature, cover lift, and lower-edge alignment.

## Spine Shape & Roll

- A **moderate to strong forward spine roll** is present, causing the front cover to slope downward toward the viewer.
- The roll is continuous from the top of the book to the bottom, without a sharp crease—typical of Golden Age shelf compression or long-term storage pressure.
- The downward slope makes the right edge (front cover outer edge) sit significantly lower than the spine edge.

## Spine Surface & Edge Condition

- Along the left edge visible from this angle, the spine fold shows:
  - Multiple **vertical color-breaking stress lines**
  - General **surface abrasion** along the fold
  - Small areas where the printed layer is thinned due to rubbing
- Lower edge of the cover shows slight waviness but remains flat overall.

## Cover Lift & Panel Alignment

- The forward roll causes the front cover to **lift upward** slightly away from the interior pages.
- The back cover (not visible here) is likely flatter due to the direction of the roll.

## Staple Region (From This Angle)

- While not directly visible, the underlying staple points create faint distortions to the spine contour, confirming stable but tensioned binding.
- No outward staple protrusion or buckling is visible from this view.

## Corners & Spine Ends

- **Bottom spine end:** minor compression but intact.
- **Top spine end:** mild rounding; no material loss detected.

## Structural Integrity

- No visible spine splits.
- No popped staples apparent from this angle.
- The spine fold retains structure despite pattern wear and curvature.

## Overall Spine Impression

A structurally sound but **moderately rolled** spine with typical Golden Age wear: color breaks, light abrasion, and minor edge compression. No structural failures visible from this angle.

---

## ☑ Staples Observations

☑ *Marge's Little Lulu Vol. 1 No. 28 – October 1950*

---

### 📌 Upper Staple (IMG\_0866.jpeg)



### Metal Condition

- The staple metal shows **moderate oxidation**, visible as darkening along the crown.
- No flaking or red-rust residue is present.
- The staple legs remain **flush and fully seated** against the spine.

## Surrounding Paper Condition

- There is **significant abrasion** directly around the staple hole.
- The color layer surrounding the staple is **broken**, exposing light under-paper.
- A **small tear** or split runs horizontally from the staple entry, consistent with age-and-stress wear.
- The printed artwork (cream-colored arm area) shows **ink thinning** immediately around the staple.

## Fiber Structure & Stress

- Fibers are **raised and frayed**, especially on the lower side of the staple.
- Mild paper compression is visible directly underneath the staple.
- No pull-through or enlarging of the staple hole is visible from this angle.

## Structural Integrity

- Despite cosmetic wear, the staple is **structurally sound** and firmly holds the cover.
  - No indication of detachment or weakness at this binding point.
-

## 📌 Lower Staple (IMG\_0865.jpeg)



### Metal Condition

- Metal exhibits **mild surface oxidation**, similar to the upper staple.
- Crown is straight and the staple legs are tight—no lifting or shifting.

### Surrounding Paper Condition

- More severe abrasion than the upper staple:
  - Color layer worn away to beige stock.
  - Notable **ink loss** along the staple's lower edge.
  - A shallow **paper gouge** or scrape sits just under the staple crown.
- The adjacent printed artwork (yellow and orange areas) shows multiple **color breaks**.

## Tearing & Fiber Disturbance

- A small **stress tear** appears on the left side of the staple hole.
- Paper fibers are visibly **roughened** on both sides of the opening.
- Vertical color-break lines radiate upward through the artwork.

## Structural Integrity

- Staple remains tightly attached.
- No cover detachment or looseness detected.
- Damage is cosmetic but more pronounced than the upper staple.

---

## Overall Staple Impression

Both staples display typical Golden Age wear:

- Mild–moderate oxidation
- Abrasion, color loss, and visible fiber lift
- Small localized tears at the staple holes
- No staple popping
- No detachment of cover or interior

Structurally solid, cosmetically worn — consistent with **VG-range spine stability**.

---

## Brittleness Test Observations

*Marge's Little Lulu Vol. 1 No. 28 – October 1950*



### **Overall Bend Behavior**

- The lifted corner bends in a **smooth arc** without cracking or snapping.
- The paper flexes naturally and does **not** resist or spring sharply.

### **Edges & Fibers**

- Heavy Golden Age toning is visible along the outer edge, but the fibers remain **cohesive**.
- No flaking, crumbling, or separation occurs at the bend point.
- The lower sheet beneath the lifted page shows consistent coloration and stable structure.

### **Surface & Color Layer Response**

- No color-layer breakage occurs along the fold.
- No brittle micro-fractures appear in the inked areas.
- The paper returns to a mostly flat position when released.

### **Structural Integrity**

- No tearing at the corner or along the edge during bending.
- No signs of dry rot or layer splitting.
- Page remains fully flexible for 1950 newsprint.

**Brittleness Rating: 8 / 10 — aged but flexible**