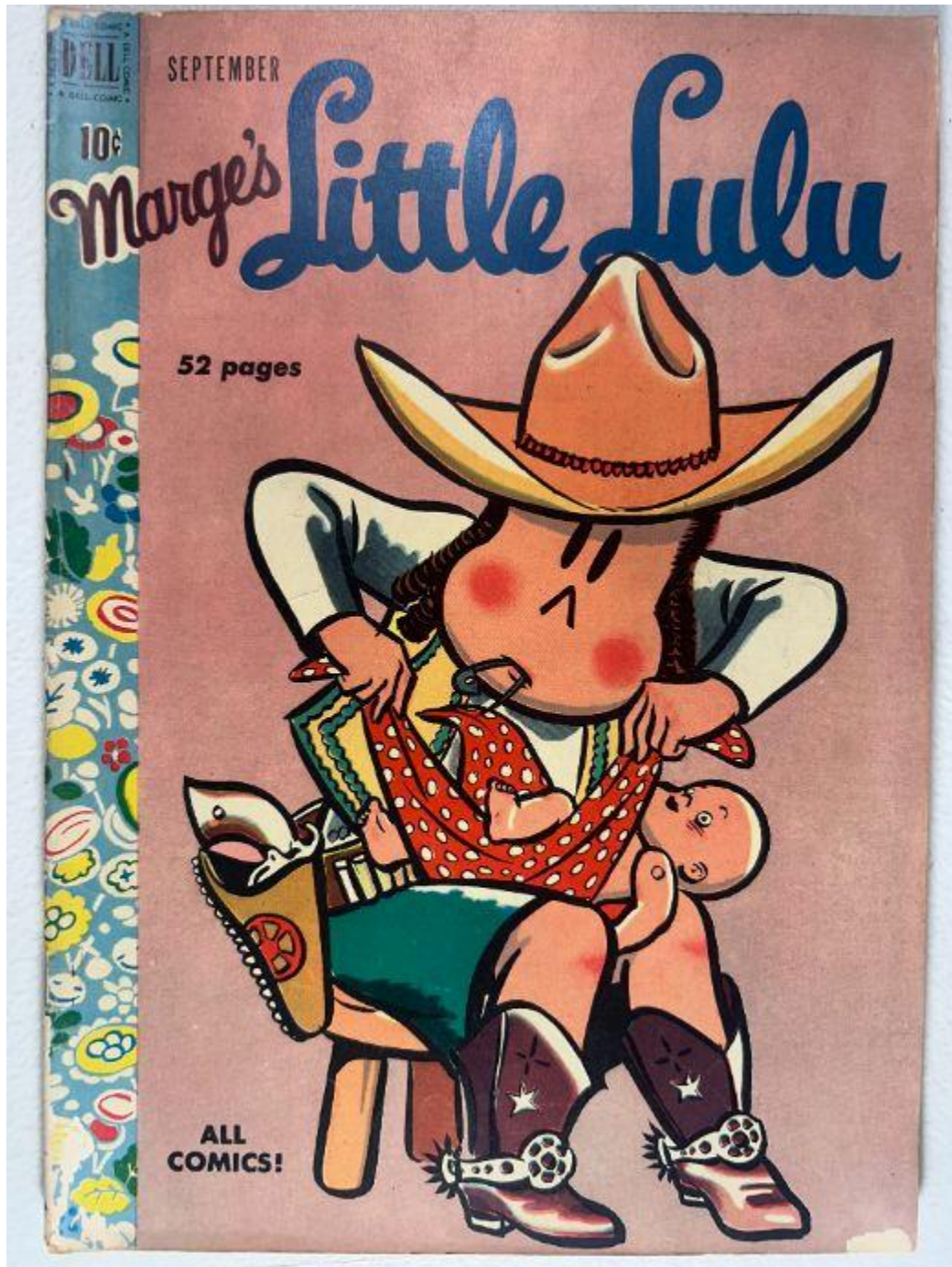


- ✓ Marge's Little Lulu Vol. 1 No. 27 – September 1950
- ✓ Front Cover Observations



## Overall Setting & Layout

The cover presents a brightly colored illustration set against a muted rose-pink background. The scene shows a seated figure dressed in a Western/cowboy outfit while holding a diapered infant. The composition is centered and fills most of the page, with text elements placed along the top and left margins.

## Foreground Elements

- A seated figure wears a large tan cowboy hat, star-studded cowboy boots, a neckerchief, and a holstered toy revolver.
- The figure is pulling a red polka-dot garment over an infant sitting on their lap.
- The infant is loosely wrapped, with expressive linework showing activity and movement.
- The seated figure sits on a simple wooden chair with visible front legs.

## Background Elements

- Solid rose-pink background with no environmental detailing.
- Left spine strip displays a floral and geometric repeating pattern in bright blues, yellows, reds, and whites.
- Behind the central figure, faint shading outlines create depth against the flat background.

## Visible Text

- Top left: "SEPTEMBER"
- Title: "**Marge's Little Lulu**" in large script lettering (red "Marge's," blue "Little Lulu").
- Mid-left: "52 pages"
- Lower-left: "ALL COMICS!"
- Price box at upper left: **10¢** with Dell logo.

## Spine Area

- Decorative patterned spine featuring stylized flowers and shapes, common to Dell issues.
- Noticeable spine wear:
  - Creasing and color breaks along the entire length
  - Small chips through the floral pattern
  - Mild rounding at both the top and bottom edges

## Condition Observations

## Corners

- **Top right:** Rounded with a small crease and faint wear.
- **Top left:** Rounded, mild abrasion near the price box.
- **Bottom corners:** Both rounded but intact with no material loss.

## Edges

- Right edge shows light rubbing and minimal roughness.
- Top edge relatively clean with minor wear.
- Bottom edge shows subtle soiling but no tears.

## Surface Wear

- Light non-breaking surface creases near the lower right quadrant.
- Slight discoloration or mottling along the bottom left area.
- Overall surface remains smooth with no staining or writing.

## Color & Print Quality

- Colors remain vivid:
  - Strong reds, greens, yellows, and blues
  - Clear linework and rich black outlines
- No fading or major ink loss visible.

## Structural Integrity

- No tears, punctures, or missing pieces on the cover.
- Paper quality shows mild age toning but retains flexibility.
- Spine remains structurally intact despite wear.

## Overall Front Cover Impression

A visually appealing and sharply printed cover with strong color retention. Wear is typical for a mid-grade Golden Age comic: moderate spine abrasion, rounded corners, and light surface creasing. The artwork is clean and undamaged, and the cover presents very well.

---

# ☑ Back Cover Observations

☑ *Marge's Little Lulu Vol. 1 No. 27 – September 1950*

## Free for BOYS for GIRLS

**MEMBERSHIP IN "DELL COMICS CLUB"**

Hey—look what Little Lulu brings you here! It's your membership certificate for the new **DELL COMICS CLUB**. And it's **FREE**—with your subscription to **LITTLE LULU COMICS**. What a wonderful idea! It gives you an opportunity to get acquainted with all the principal characters of the various Dell Comics Magazines. Saves you money too! But wait. You'll also get—

**FREE—BEAUTIFUL MEMBERSHIP EMBLEM!**

**For BOYS**



**For GIRLS**





Marge's  
*Little Lulu*

- TOPS IN COMICS ENTERTAINMENT
- THE LATEST DOINGS OF LITTLE LULU AND HER GANG
- THE ADVENTURES OF MISCHIEVOUS TUBBY
- LULU'S EXCITING "DIRY"
- SPECIAL FUNNY SHORT FEATURES

It's a bright green baseball emblem for boys! It's a bright red heart-shaped emblem for girls! It is attractively designed and made of long-wearing felt. Comes to you ready to be sewed on. Ideal for your sweater—your polo shirt—your swim suit or jacket! It's decorative! **AND REMEMBER, EACH EMBLEM WILL BEAR YOUR FIRST NAME.**

Be among the first to join the **DELL COMICS CLUB**. Show off your beautiful membership emblem and certificate to your friends. They will envy you!





DON'T WASTE A MINUTE!  
 ACT NOW!  
 RUSH COUPON ON OTHER SIDE WITHOUT DELAY!

They call her **LITTLE LULU**—she's acting sweet and innocent . . . but she is a smart little Imp at heart. Faster than you can say D-E-L-L, she turns every occasion into a laugh riot. She's funny all right—with a capital F. Assure yourself a whole year of fun—subscribe to **LITTLE LULU COMICS**. It's only \$1.00—including **DELL COMICS CLUB** certificate and emblem!

# Overall Setting & Layout

A full-page **Dell Comics Club** advertisement printed in bright yellow, red, green, and black ink. The layout mirrors other 1950 Dell back-cover promotions: large membership emblems, a certificate illustration, a descriptive paragraph, conversational comic panels, and subscription-style urgency text. The page is vertically organized with bold text blocks and colorful emblem graphics.

---

## Foreground Elements

- A central illustrated figure stands at the right, holding up a **Dell Comics Club membership certificate** containing thumbnail portraits of various Dell characters.
  - A small dog appears beside the figure, positioned under the certificate.
  - Two large emblem shapes:
    - A **green circle** labeled "YOUR NAME" for boys
    - A **red heart** labeled "YOUR NAME" for girls
  - A black feature box titled "**Marge's Little Lulu**", listing the comic's recurring features.
  - Two circular illustrated panels near the bottom, each depicting a child-like figure speaking about the membership emblems.
  - A lower-right figure holds a *Little Lulu* issue and looks downward toward it.
- 

## Primary Text Elements

Found exactly as printed:

### Header & Promotional Lead-In

- **"Free for BOYS for GIRLS"**
- **"MEMBERSHIP in 'DELL COMICS CLUB'"**
- Invitation to obtain a personalized membership emblem bearing the reader's first name.

### Feature List (Black Box)

- Marge's Little Lulu
- TOPS IN COMICS ENTERTAINMENT
- THE LATEST DOINGS OF LITTLE LULU AND HER GANG
- THE ADVENTURES OF MISCHIEVOUS TUBBY
- LULU'S EXCITING "DIRY"

- SPECIAL FUNNY SHORT FEATURES

## Bottom Promotional Command

- “DON’T WASTE A MINUTE! ACT NOW!”
- “RUSH COUPON ... WITHOUT DELAY!”

All text is crisp and fully legible.

---

## Illustrated Panels (Bottom Section)

- **Left circular panel:** A child expresses admiration for the emblem (“I just love...”) while another observes.
  - **Right circular panel:** A second child comments on the emblem’s appeal.
  - **Lower right figure:** Holding and examining a *Little Lulu* comic.
- 

## Condition Observations

### Toning

- Moderate age toning throughout, slightly darker near the upper margin.
- Light cream coloration consistent with 1950 Dell back covers.

### Corners

- **Top left:** Rounded with mild wear.
- **Top right:** Rounded; slight dulling.
- **Bottom corners:** Softened but free of tears or material loss.

### Edges

- **Left edge:** Slight discoloration near spine; minimal abrasion.
- **Right edge:** Clean with almost no wear.
- **Bottom edge:** Light scuffing, no chips.

### Surface

- Light scuffing but no staining or spotting.

- No pencil, pen, crayon, or marks of any kind.
- No moisture rippling or tide marks.
- Small scattered age specks in lighter color fields.

### **Color Quality**

- Excellent saturation: reds, greens, yellows very bold.
- Black text boxes dark and consistent.
- No signs of fading.

### **Structural Integrity**

- Paper lies flat.
- No tears, impressions, or creases.
- No missing pieces.

---

## **Overall Back Cover Impression**

A clean, vivid, well-preserved Dell back cover with strong color retention and no structural damage. Wear is limited to natural toning, corner softening, and minor edge rub — a solid **mid-grade Golden Age back cover** with excellent eye appeal.

---

# Inside Front Cover Observations

Marge's Little Lulu Vol. 1 No. 27 - September 1950



## Overall Setting & Layout

The page presents a **9-panel black-and-white + red duotone "ALVIN" gag strip** arranged in a **3 × 3 grid**. The artwork uses solid red shading for backgrounds and clothing, with black line art for characters and outlines. The page is printed on heavily toned interior stock typical of 1950 Dell issues.

The **title "ALVIN"** appears centered at the top margin.

Along the bottom, a full **publication block** confirms:

*MARGE'S LITTLE LULU, Vol. 1, No. 27, September 1950.*

This matches the issue you provided — **no discrepancy detected**.

---

## Panel-by-Panel Content Description

### Top Row (3 panels)

- **Panel 1:**  
A small figure approaches a flowerbed containing tulips. A posted sign reads "**DO NOT PICK FLOWERS.**"
- **Panel 2:**  
The figure tiptoes away, glancing at an adult figure in a dark uniform standing near a building corner.
- **Panel 3:**  
The small figure hurries toward the right as the uniformed figure observes silently.

### Middle Row (3 panels)

- **Panel 4:**  
Another child approaches from the opposite direction, walking toward the first child.
- **Panel 5:**  
The children meet in front of the adult figure; the second child gestures animatedly.
- **Panel 6:**  
The first child points emphatically upward while the other child watches.

### Bottom Row (3 panels)

- **Panel 7:**  
The uniformed adult stands calmly as the small figure approaches from behind.

- **Panel 8:**  
The child jumps or startles suddenly, with motion lines rising above the head.
  - **Panel 9:**  
The child flees toward the right while another child laughs or reacts behind them.
- 

## Background Elements

- A curved sidewalk/pathway behind characters.
  - A building wall with circular window-like patterns in several panels.
  - Tulip flowerbed in the first panel with clear petal and leaf shapes.
  - Minimal horizon lines; backgrounds rely mainly on flat red shading.
- 

## Publication Block (Bottom Margin)

Includes:

- Title
- Volume and issue number
- Date: **September 1950**
- Publishing address
- Copyright
- Subscription and "Changes of Address" instructions

All text is clear and fully legible.

---

## Condition Observations

### Toning

- Heavy Golden Age interior-page toning.
- Darker brown banding along the top and left margins.
- Gutter area shows deep aging but no cracking.

### Edges

- Left edge shows heavy darkening consistent with oxidation.
- Right edge (near the cover) shows lighter toning and mild waviness.

## Corners

- Upper-left corner: rounded with soft creasing.
- Lower corners: rounded but intact.
- Upper-right corner: moderate toning from exposure.

## Surface

- Clean artwork; no stains, no foxing clusters.
- No pen, pencil, crayon, or erasure marks.
- No moisture ripples or tide lines.

## Binding

- Inner margin gutter shows **tight attachment** with no staple tearing.
- No paper pull or splitting visible.

## Print Quality

- Red shading is strong and consistent.
- Black line art prints cleanly with no smearing or ink lift.
- Panels are uniformly aligned.

---

## Overall Inside Front Cover Impression

A structurally solid and clean inside front cover page with heavy but typical toning, intact printing, and no writing, stains, or moisture damage. Wear is limited to natural Golden Age oxidation and corner softening.

**Volume and publication date match your comic's title — no mismatch detected.**

---

**please upload the Centerfold**

## Provide your feedback on BizChat

**You said:**

Don't include "Volume and publication date match your comic's title — no mismatch detected." in the output

**Copilot said:**

Copilot

Understood — that line will **not** appear again in any future Inside Front Cover observations.



# Overall Setting & Layout

A two-page full-color story sequence with rectangular panels arranged in a vertical-stack format. The narrative follows a single figure walking through a neighborhood attempting to determine where they live, inspecting houses, yards, and doors. Both pages show consistent print quality and strong color saturation typical of Dell's early 1950s interior stock.

---

## Left Page Observations

### Panel Content & Narrative Flow

- A figure walks along a sidewalk bordered by a tall yellow fence and grassy yard.
- The figure examines a small house with a brown roof and red trim, expressing uncertainty.
- The figure approaches a blue-trimmed home but dismisses it as "too small."
- In the bottom row, the figure finally spots a yellow multi-windowed house with a long walkway and declares: "OBOY! This is it!!"

### Background Elements

- Yellow wood-board fencing
- Green lawns, scattered trees
- Mixed residential structures with different architectural styles
- Light blue sky in many panels

### Condition Observations

- **Toning:** Heavy, most prominent along outer edges and gutter.
  - **Corners:** Rounded; lower corners worn but intact.
  - **Edges:** Minor roughness, no chips.
  - **Surface:** Clean; no stains or writing.
  - **Color:** Bright, stable, vivid hues throughout.
  - **Binding:** Gutter shows aging but no tearing or separation.
- 

## Right Page Observations

### Panel Content & Narrative Flow

- Figure approaches a tall black metal fence and declares the place “familiar.”
- The figure walks toward a yellow porch with blue window frames and knocks at the door.
- The figure questions why “everybody’s takin’ their time to—”
- In the final panels, the figure uses a long pull-cord doorbell and prepares to read a message.

## Background Elements

- Decorative fencing
- Yellow house siding with blue trim
- Trees with thick green canopies
- Wooden porch railings and front steps

## Condition Observations

- **Toning:** Heavy darkened margins, especially at the gutter.
- **Edges:** Smooth outer edge with faint waviness.
- **Corners:** Rounded but intact.
- **Surface:** No foxing, stains, or moisture rippling.
- **Color:** Strong saturation; reds, yellows, and blues vivid.
- **Binding:** Both pages firmly attached; no centerfold stress tears.

---

## Overall Centerfold Impression

A clean, bright, structurally stable centerfold with strong color preservation and no tears, writing, stains, or moisture marks. Toning is heavy but typical for 1950 newsprint, and binding remains tight. The centerfold presents well and aligns with solid mid-grade Golden Age condition.

---

## ☑ Inside Pages Observations

☑ *Marge's Little Lulu Vol. 1 No. 27 – September 1950*

(You uploaded **four** inside-page images here. Observations follow in the order received.)

### 📄 Inside Page 1 (IMG\_0846.jpeg)



## Overall Setting & Layout

A full-color **six-panel** story page titled “**Marge’s LITTLE LULU — GILBERT THE GORILLA.**” The page begins inside a zoo exhibit area and transitions into a chaotic indoor sequence caused by loose oranges or balls rolling across the floor.

## Panel Content

- **Title Panel:** Little Lulu walks past a zoo enclosure containing a gorilla resting behind bars.
- **Panels 2–3:** Lulu approaches the elephant house and sees oranges/objects rolling out the doorway. Children run and collide as the floor becomes covered.
- **Panels 4–5:** A supervising adult scolds the children (“YOU LITTLE ROUGHNECKS!”). More oranges spill into the hall.
- **Panel 6:** Lulu is swept away by a wave of oranges, pushed out the door with a long motion streak.

## Background Elements

- Zoo-style architecture with barred cages.
- Wooden interior doorframes.
- Repeating orange circular objects rolling throughout.

## Condition Observations

- **Toning:** Heavy edge toning, especially top and gutter.
  - **Corners:** Rounded; upper corner slightly creased.
  - **Edges:** Minor abrasion.
  - **Surface:** Clean; no stains or foxing.
  - **Color:** Strong saturation; no fading.
-

📄 Inside Page 2 (IMG\_0850.jpeg)



**Overall Setting & Layout**

A **nine-panel** continuation page showing Lulu using a flute, leading to a slapstick crowd-dancing sequence inside a hall filled with people.

## Panel Content

- Lulu walks past a meeting hall saying she wants to practice the flute.
- Lulu plays a few notes, causing the mayor to dance uncontrollably, followed by the entire audience.
- Crowd scenes show dozens of figures dancing in exaggerated poses.
- Lulu attempts to escape as the entire group stampedes chaotically.
- A wealthy onlooker offers Lulu "FOURTEEN BILLION DOLLARS" for her flute.
- Lulu returns home, breathless, as the hall doors burst open.

## Background Elements

- Rows of seats and wooden stage.
- Crowd artwork filling entire mid-page.
- Brick homes and interiors in later panels.

## Condition Observations

- **Toning:** Heavy tan/brown toning throughout.
  - **Edges:** Smooth; no tears.
  - **Corners:** Rounded; upper-left very soft.
  - **Surface:** Clean; no stains or marks.
  - **Color:** Deep, vivid, and stable.
- 

## Inside Page 3 (IMG\_0848.jpeg)

(This page repeats part of the centerfold storyline already captured, but appears again as a single-page view.)

## Overall Setting & Layout

A nine-panel page where the figure attempts to locate the correct house. This matches the right-page storyline of the centerfold but is captured here as a standalone page.

## Panel Content

- Lulu approaches a gated area saying the location feels familiar.
- Lulu approaches the porch of a yellow/blue house and knocks repeatedly.
- Lulu questions why no one answers.
- Lulu discovers a note on the door reading "**Away for the Summer.**"

## Background Elements

- Wooden porch with yellow siding and blue door trim.
- Metal fence, distant grass and trees.
- Shadowed interiors behind the door.

## Condition Observations

- **Toning:** Heavy throughout, especially at gutter.
  - **Edges:** Clean outer edge; mild waviness.
  - **Corners:** Rounded but intact.
  - **Surface:** No staining or marks.
  - **Color:** Well preserved; very bright.
- 

## Inside Page 4 (IMG\_0849.jpeg)

### Overall Setting & Layout

A nine-panel page concluding the "Gilbert the Gorilla" storyline. The plot involves Lulu escorting a gorilla through scenes involving a strong-arm act and a comedic escape through various zoo areas.

### Panel Content

- Gorilla protects a smaller figure from an adult aggressor.
- Gorilla uses strength to bend metal bars and toss an adult.
- Characters run through zoo grounds, including brick walls and fences.
- Gorilla and child walk together at dusk, forming a humorous resolution.
- Final panel: Lulu speculates how the gorilla escaped.

### Background Elements

- Outdoor pathways, brick walls, iron fencing.
- Night scene in panel eight with stars and hills.

### Condition Observations

- **Toning:** Consistent darkening around edges.
- **Edges:** Slight rub on outer edge; intact overall.
- **Corners:** Rounded; mild wear.
- **Surface:** Very clean; no foxing, stains, or pencil marks.

- **Color:** Strong saturation, especially browns, reds, and greens.
- 

## Overall Inside Pages Impression

Across all four pages:

- Strong color retention
  - Heavy but typical Golden Age toning
  - No tears, chips, stains, writing, or moisture damage
  - Tight binding and clean gutters
  - Rounded corners but structurally intact
  - Good page flexibility
- 

## Spine Observations

*Marge's Little Lulu Vol. 1 No. 27 – September 1950*



## Overall Setting

The comic is placed horizontally on a white wire rack, giving a clear **side-profile** view of the entire spine. The angle strongly reveals curvature, cover lift, spine wear, and edge compression.

---

## Spine Shape & Roll

- A **moderate spine roll** is present, curving toward the front cover.
  - The front cover visibly **lifts upward** along its entire length, while the back cover lies flatter—classic Golden Age handling wear.
  - The roll is smooth and uniform, not sharp or kinked.
- 

## Spine Surface Condition

- The patterned Dell spine strip (floral/abstract multicolor theme) shows **multiple color breaks**.
  - Visible **abrasion** along the entire spine edge, especially toward the center.
  - Small **paper chips** are present, exposing light inner stock.
  - Print layer on the patterned strip shows dulling in several sections.
- 

## Staple Region (General View)

- Both staple zones appear slightly raised under the cover, indicating tension but **no protrusion**.
  - No obvious tearing or spine-split shadows appear in this angle, though wear suggests expected stress when viewed close-up.
- 

## Corners & Spine Ends

- **Top spine end:** rounded, with minor paper fray along the edge.
  - **Bottom spine end:** slightly more compressed, showing gentle blunting but intact.
  - Both ends retain full material with **no splitting**.
- 

## Structural Integrity

- Spine remains fully connected with no visible detachment.
- No evidence of hinge cracking from this angle.
- Despite cosmetic wear, the structural fold appears strong.

---

## Overall Spine Impression

A solid but **moderately worn** Golden Age spine showing:

- noticeable spine roll
- multiple color-break abrasions
- minor chipping
- edge compression at ends
- intact structure with no splits

Consistent with **VG-range** mid-grade Dell condition.

---

## ☑ Staples Observations

☑ *Marge's Little Lulu Vol. 1 No. 27 – September 1950*

(You provided **two** close-up staple photos. Observations below reflect each staple individually.)

---

### 📌 Upper Staple (IMG\_0853.jpeg)



### Metal Condition

- Slight oxidation visible as dulling along the staple crown.
- No active rust migration into surrounding paper.
- Staple legs lie **flat and tight**, not lifting or bent.

## Surrounding Paper

- Moderate **abrasion** directly around the staple entry point.
- The patterned spine area (floral blue/yellow/white design) shows **color break** and mild **ink wear** around the staple.
- Minor **fiber compression** beneath the staple.
- No tearing or elongated staple holes visible.

## Structural Integrity

- Staple is firmly seated, holding cover and interior securely.
- No signs of cover detachment or weakness at the hinge.

---

### Lower Staple (IMG\_0852.jpeg)



## Metal Condition

- Similar mild oxidation to upper staple—darkened but stable metal.
- No flaking or red rust residue.

## Surrounding Paper

- More pronounced abrasion compared to the upper staple.
- Color layer is broken around the staple, showing **white exposed fibers**.
- A small **surface-level tear** or **chip** at the lower edge of the staple opening.
- Patterned spine artwork shows noticeable rubbing and thinning of ink.

## Structural Integrity

- Staple remains firmly attached, with no cover lift around the entry area.
- No interior page pull-through visible.
- Damage is cosmetic rather than structural.

---

## Overall Staple Impression

Both staples show:

- Mild, stable oxidation
- Moderate abrasion around staple holes
- Some color loss and exposed paper fibers
- No separation, no loose staple legs, and no significant tearing

Structural attachment remains solid, with wear consistent with **mid-grade Golden Age condition**.

---

## Brittleness Test Observations

*Marge's Little Lulu Vol. 1 No. 27 – September 1950*



**Overall Bend Behavior**

- The lifted page folds into a smooth, controlled curve with **no snapping, no cracking, and no stiff resistance**.
- The page returns toward flat when released, indicating continued flexibility in the paper fibers.

### **Edges & Fibers**

- The outer edge shows **heavy Golden Age toning** (deep tan/brown), but fibers remain cohesive.
- No edge crumbling, flaking, or powdering is visible.
- The fold point shows no fiber separation or layered splitting.

### **Surface & Color Layer Response**

- Color layer bends without cracking.
- No new crease lines appear during the flex.
- Under-page shows the same natural toning with stable structure.

### **Structural Integrity**

- No micro-tears or stress marks form during bending.
- No brittleness fracture at the corner or along the edge.
- Paper retains adequate elasticity despite oxidation and aging.

**Brittleness Rating: 8 / 10 — aged but fully flexible**