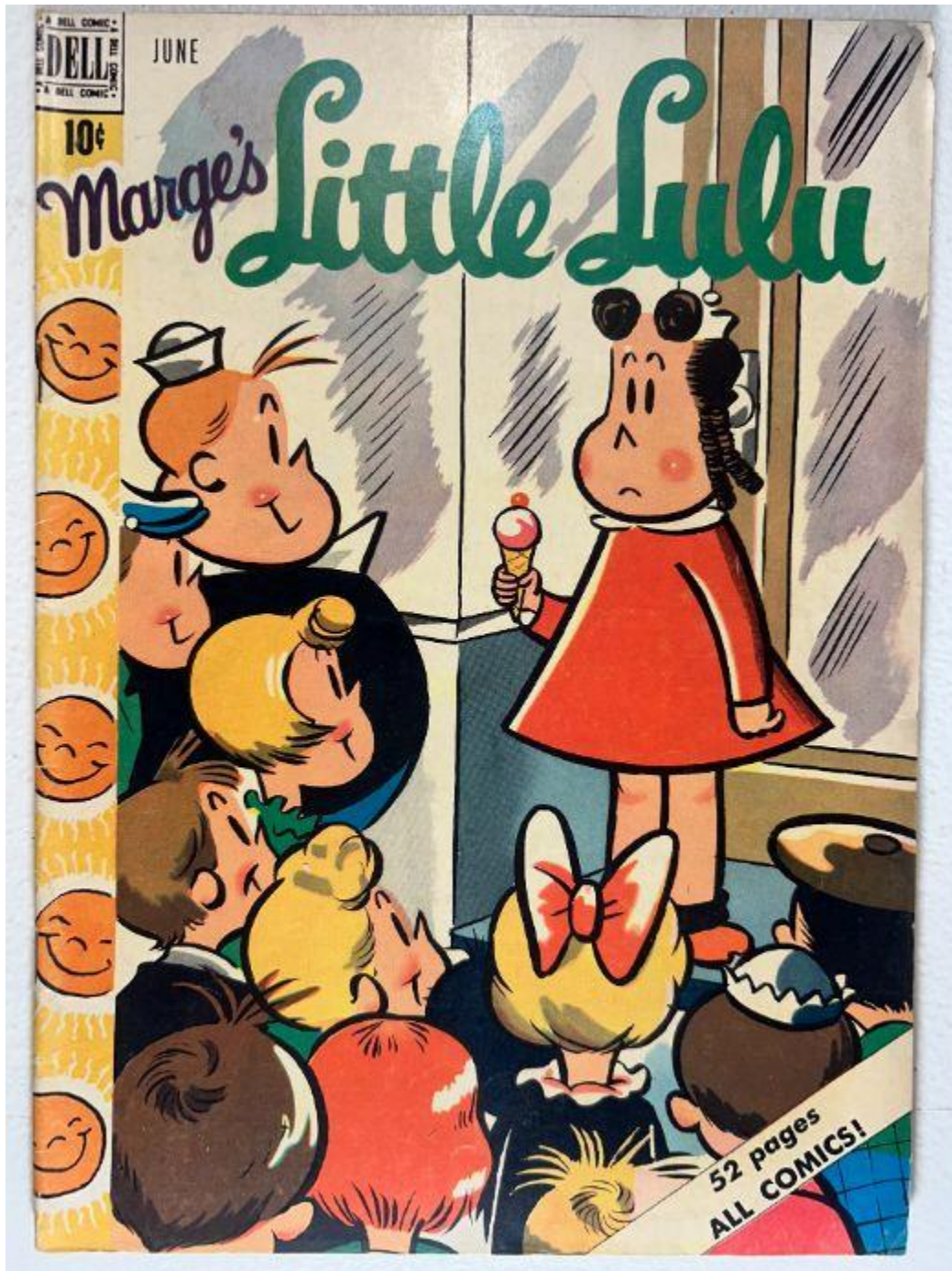


Marge's Little Lulu Vol. 1 No. 24 – June 1950

Front Cover Observations



## Overall Setting & Layout

The cover depicts a brightly colored indoor scene, likely an ice-cream parlor or shop interior. A large crowd of figures appears gathered in the foreground, facing a single central figure holding a small ice-cream cone. The background shows tall window panes with diagonal streaking patterns. The composition emphasizes the contrast between the single figure on a raised platform and the crowd below.

## Foreground Elements

- A central figure stands elevated on a circular platform while holding a small, single-scoop ice-cream cone.
- The figure wears a bright red, long-sleeved garment and dark footwear.
- Hair is styled in several rounded shapes with bows or ties.
- The crowd below includes numerous figures, each with distinct hairstyles or hats, looking upward.
- One figure near the left foreground wears a rounded cap and holds a round object wrapped in paper.
- Another figure near the center foreground wears a large bow-shaped accessory atop the head.

## Background Elements

- The wall behind the central figure consists of large glass windows divided into vertical frames.
- Diagonal line shading on the glass suggests reflection or weather streaking.
- A portion of a wooden counter or structure appears behind the central figure.
- Shadows and interior tones indicate an indoor retail space.

## Visible Text

- Top-left area:
  - "JUNE"
  - Price box showing **10¢**
  - "DELL COMIC" imprint
- Main title in stylized, multi-color lettering: "**Marge's Little Lulu**"
- Lower right corner text on a diagonal banner: "**52 pages ALL COMICS!**"

## Spine Area

- Spine displays a repeating pattern of circular faces with simple features against an orange/yellow background.
- Wear includes:
  - Noticeable **stress lines and color breaks**
  - Mild **chipping** along the upper and lower spine
  - Slight **rounding and abrasion** at the spine edge

## Condition Observations

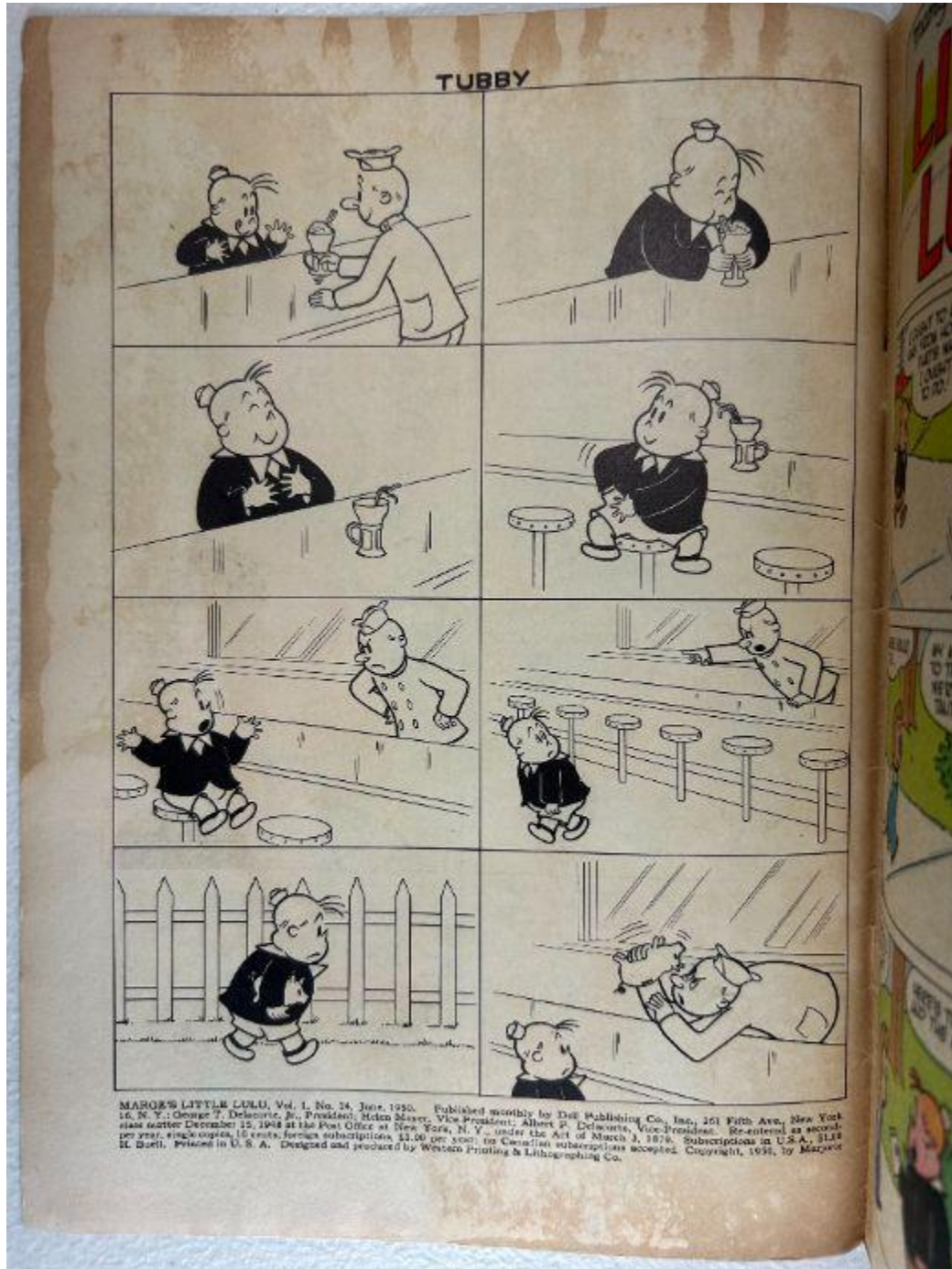
- **Corners:**
  - Top right corner has a visible crease and rounding.
  - Other corners moderately rounded but intact.
- **Edges:**
  - Light abrasion along the right edge.
  - Bottom edge shows minimal wear, no tearing.
- **Surface Wear:**
  - Several light, non-color-breaking wrinkles visible in the lower left region.
  - Very light soiling near the bottom.
- **Color Quality:**
  - Colors remain bright and fully saturated across the entire cover.
  - No sun fading visible.
- **Structural Integrity:**
  - No tears or missing material on the cover.
  - Paper exhibits mild age toning near the top edge.
- **Gloss:**
  - Low sheen typical of Dell covers from this period.

## Overall Impression

A strong, vivid front cover with solid eye appeal. Wear is concentrated along the spine and corners, with scattered surface creases. Structurally intact, with excellent color strength and no stains or tears.

# ☑ Inside Front Cover Observations

☑ *Marge's Little Lulu Vol. 1 No. 24 – June 1950*



# Overall Setting & Layout

A full black-and-white **eight-panel “TUBBY” gag strip** arranged in a **2 × 4** grid. Panels show a continuous sequence featuring one primary character in what appears to be a café or soda-counter environment, with long countertop surfaces, stools, a fence, and a window reflection used as comedic elements. The page includes a full publication block along the bottom margin listing the issue details.

## Panel-by-Panel Content Description

### Top Row (Panels 1–2)

- A small figure seated at a long counter looking upward at another figure behind the counter who is handing over a mug-shaped object.
- In the next panel the seated figure holds the mug with both hands, facing right, seated alone on one of several circular stools.

### Second Row (Panels 3–4)

- The figure appears pleased, holding the cup with both hands while sitting upright.
- Next panel: The character places the cup on the counter and begins to twist or adjust their midsection, as if preparing to move.

### Third Row (Panels 5–6)

- The character now sits on the floor to the left of the stool, arms raised outward, possibly reacting to something spilled or dropped.
- Next: The figure stands beside the counter pointing toward the right where the stools recede into perspective.

### Bottom Row (Panels 7–8)

- The figure stands behind a white picket fence, facing left.
- Final panel shows the character leaning over the counter surface from the customer side, gripping the rim and peering inside, suggesting curiosity or disappointment.

## Background Elements

- Long counter surface present in most panels, drawn with diagonal perspective.
- Circular stools evenly spaced under the counter.
- Picket fence appears in one panel, indicating exterior location or change of scene.

- Reflected window or glass surface visible in multiple panels, showing faint reversed lines.

## Publication Block (Bottom Margin)

Text includes:

- "MARGE'S LITTLE LULU, Vol. 1, No. 24, June, 1950."
- Dell Publishing Co. information, printing location, copyright, and subscription details.  
All text is clean and intact.

## Condition Observations

- **Toning:**  
Heavy Golden Age toning, especially along the left margin and top edge where darker discoloration forms an uneven band.
- **Corners:**  
Upper-left corner moderately rounded with creasing; bottom corners worn but intact.
- **Edges:**  
Left edge shows pronounced dark staining; top edge shows similar water-stain-like discoloration but does not appear puckered.
- **Surface:**  
Interior art remains clear; no ink smearing, writing, or pencil marks.  
Light foxing-like speckles appear near the top margin.
- **Binding:**  
Inner gutter shows stable attachment with no tearing or stress marks.
- **Print Quality:**  
Lines are crisp and uniformly inked; no registration flaws.

## Overall Impression

A solid but visibly **age-toned** inside front cover page with pronounced left-side staining. Despite heavy toning, structural integrity is good, artwork is undamaged, and the page remains fully readable with clean linework.

---

# ☑ Centerfold Observations

☑ Marge's Little Lulu Vol. 1 No. 24 – June 1950



# Overall Setting & Layout

A full two-page interior story sequence presented in a tightly packed grid of rectangular, full-color panels. The centerfold gutter is visible and intact, with no separation. Both pages lie flat, showing uninterrupted continuity of artwork and text from left to right.

Each page contains multiple stacked rows of narrative panels depicting an extended comedic storyline involving a small figure attempting to imitate birds, climbing into a nest, falling, and later awakening in a bush before encountering additional confusion outdoors.

---

## Left Page (IMG\_0819 – left side)

### Scene & Panel Content

- Sequence begins with the small figure concealed behind bushes or inside shaded foliage.
- Several panels include small flying birds, a nest, and outdoor natural scenery.
- Mid-page panels show the character perched inside a nest, attempting to “peep” like a bird.
- Subsequent panels depict an attempt to launch or fly:
  - The figure stands at nest’s edge
  - Leans forward
  - Loses footing
  - Drops downward
- A large red text sound effect “**AWFUL THUD!**” appears prominently in the impact panel, with starburst symbols around the landing.

### Background Elements

- Rolling green hills
- Brown tree trunks
- Light blue sky gradients
- Occasional fence lines and simple environmental shading

### Condition Observations

- **Toning:** Heavy and even, particularly dark near the top and outer edges.
- **Edges:** Right edge slightly rough; no chips.
- **Corners:** Rounded; lower corners more softened.
- **Surface:** Clean except for slight speckling inherent to 1950s newsprint.
- **Color:** Strong saturation; greens and reds remain vivid.
- **Gutter:** Fold shows mild darkening but no tearing or stress marks.

---

## Right Page (IMG\_0819 – right side)

### Scene & Panel Content

- Begins with the character buried in or emerging from a dense bush, covered in leaves.
- A search sequence follows:
  - Character looks upward (“She searched high...”)
  - Character looks downward (“...and low.”)
- A panel shows the character shouting toward the sky/world, using wide open mouth and bold line art.
- Additional panels depict a bird perched on a distant tree limb, and later the figure observing a nest high up on a trunk.
- Bottom panel shows a tree path with a figure sitting at distance.

### Background Elements

- Tall tree trunks with textured bark lines
- Bushes and large leaf clusters
- Sparse grass in mid-panels but more detailed lawn in lower panels
- Red textured bark tones in the largest tree panel
- Blue sky with natural uneven hue

### Condition Observations

- **Toning:** Uniform, moderate-to-heavy, slightly darker at the upper inner edge.
- **Edges:** Smooth outer edge with no chips or tears.
- **Corners:** Rounded but intact.
- **Surface:** Clean overall; no ink transfer or moisture spots.
- **Color:** Consistent saturation throughout; no fading or misregistration.
- **Gutter:** Fully intact; staples remain tight.

---

## Overall Centerfold Impression

A clean, vivid, and structurally intact centerfold with:

- Excellent color retention
- No tears, stains, writing, or moisture effects
- Stable gutter with tight staple support

- Only expected Golden Age toning and corner rounding

A solid, attractive mid-grade centerfold showing no structural issues beyond normal age wear.

---

# ☑ Back Cover Observations

☑ Marge's Little Lulu Vol. 1 No. 24 – June 1950

## Free for BOYS for GIRLS

### MEMBERSHIP IN "DELL COMICS CLUB"

Hey—look what Little Lulu brings you here! It's your membership certificate for the new **DELL COMICS CLUB**. And it's **FREE**—with your subscription to **LITTLE LULU COMICS**. What a wonderful idea! It gives you an opportunity to get acquainted with all the principal characters of the various Dell Comics Magazines. Saves you money too! But wait. You'll also get—

FREE—BEAUTIFUL MEMBERSHIP EMBLEM!

For BOYS



For GIRLS





Marge's  
Little Lulu

- TOPS IN COMICS ENTERTAINMENT
- THE LATEST DOINGS OF LITTLE LULU AND HER GANG
- THE ADVENTURES OF MISCHIEVOUS TUBBY
- LULU'S EXCITING "DIRY"
- SPECIAL FUNNY SHORT FEATURES



I just love little Lulu! She's clever! It's a riot to watch her out-smart everybody!



It's so much fun to read the confessions and inside story of Little Lulu's life in her own "Diry"!





DON'T WASTE A MINUTE!  
ACT NOW!  
RUSH COUPON ON OTHER SIDE WITHOUT DELAY!

They call her **LITTLE LULU**—she's acting sweet and innocent . . . but she is a smart little imp at heart. Faster than you can say **D-E-L-L**, she turns every occasion into a laugh riot. She's funny all right—with a capital **F**. Assure yourself a whole year of fun—subscribe to **LITTLE LULU COMICS**. It's only \$1.00—including **DELL COMICS CLUB** certificate and emblem!

# Overall Setting & Layout

A full-page promotional advertisement dominated by bright primary colors and multiple illustrated figures. The theme is **membership in the “Dell Comics Club,”** with the central character presenting a certificate and inviting readers to join. The layout is divided into distinct text blocks, emblem areas, illustrated panels, and subscription-style promotional graphics.

---

## Foreground Elements

- A large figure on the right holds up a **Dell Comics Club certificate.**
  - A small dog stands beside the figure, facing left toward the promotional emblems.
  - Two large circular and heart-shaped emblem spaces appear in green (“For Boys”) and red (“For Girls”), each labeled **“YOUR NAME.”**
  - A solid black feature box on the right lists highlights of the *Little Lulu* comic content.
  - Two small circular illustrated panels near the bottom show characters speaking conversationally about the club and its items.
  - A figure in the lower-right corner holds an open *Little Lulu* comic book with decorative motion-lines above the head.
- 

## Primary Text Elements

Prominent headings include:

- **“Free for BOYS for GIRLS”**
- **“MEMBERSHIP in ‘DELL COMICS CLUB’”**
- **“Marge’s Little Lulu”** (in the black feature box)

The promotional text highlights:

- Instructions for obtaining a personalized membership emblem
- Benefits of club membership
- Emphasis that **each emblem will bear the reader’s first name**
- Steps to mail in the coupon

A small red arrow panel near the bottom instructs readers to **“ACT NOW!”** and directs them to a coupon on the reverse side of the ad.

---

## Illustrated Panels (Bottom Row)

Two conversation-style circular panels:

- Left: a seated figure expressing admiration for the emblem: "I just love this fancy new emblem... just everybody!"
- Right: another figure saying the emblem matches Dell Comics Club apparel in a humorous, promotional tone.

At the lower right, a figure reads a Little Lulu comic with a wide, open-mouthed expression.

---

## Condition Observations

### Toning

- Light-to-moderate toning across entire page.
- Slight darkening along the top and left margins.

### Corners

- **Top left:** rounded with light edge darkening.
- **Top right:** slightly worn and softened.
- **Bottom corners:** moderately rounded but fully intact.

### Edges

- **Left edge:** Slight vertical waviness and soft darkening.
- **Right edge:** Clean with minimal abrasion.
- **Bottom edge:** Slight roughness, no chips.

### Surface

- Light overall scuffing but **no stains, fingerprints, or moisture effects.**
- No pen, pencil, crayon, or foreign markings.
- Clear printed detail throughout.

### Color Quality

- Very strong saturation: reds, greens, yellows, and blues remain vibrant.
- Black text blocks are dense and clean.

- No fading or color distortion detected.

## **Structural Integrity**

- Paper lies flat; no rippling.
  - No tears or missing sections.
  - No dents, folds, or impressions affecting art or text.
- 

## **Overall Impression**

A bright, highly intact back cover with strong color fidelity and clean printing. Wear is limited to typical Golden Age age-toning, corner rounding, and light edge abrasion. Structurally solid and free of tears, stains, or writing.

---

## ☑ Inside Pages Observations

☑ *Marge's Little Lulu Vol. 1 No. 24 – June 1950*

(You uploaded **four** inside-page photos. Observations follow in the order received.)

### 📄 Inside Page 1 (IMG\_0818.jpeg)



## Overall Setting & Layout

A full-color story page titled “**Marge’s LITTLE LULU**” at the top, with a nine-panel grid below. Scenes take place outdoors along sidewalks, grassy areas, and beneath trees. Two recurring figures engage in dialogue about errands, running away, responsibilities, and exchanging favors.

## Panel-by-Panel Content Highlights

- A figure walks alone near the street, muttering about feeling ashamed.
- Another figure spins a jump rope while counting aloud (“twenty-two... twenty-three...”).
- Conversation begins, with concern about what’s wrong and what chores must be done.
- The jump-rope figure explains being pressured by a parent to attend a club meeting.
- Negotiation occurs: one character offers to run errands for the other.
- A small shopping list and money are handed over.
- Both figures walk off in different directions, closing the page.

## Background Elements

- Sidewalks with angled perspective
- Trees, bushes, and a fenced residential background
- Small patch of red-roofed houses in distant panels
- Shadows cast by figures and ground contours

## Condition Observations

- **Toning:** Heavy, especially along right and bottom edges.
  - **Edges:** Slight abrasion; no tears.
  - **Corners:** Rounded and slightly soft.
  - **Surface:** Clean with no stains or writing.
  - **Color:** Strong saturation; blues, reds, and greens well preserved.
  - **Binding:** Gutter intact, no stress lines.
-

## 📄 Inside Page 2 (IMG\_0822.jpeg)



## Overall Setting & Layout

A full-color nine-panel layout focused on errands, planning, and interpersonal conflict. Scenes shift between outdoor areas, a yard, stairs, and a front doorway.

## Panel-by-Panel Content Highlights

- A figure sits behind a fence reading a folded paper (“I’ll feel better when all these chores are in my pocket!”).
- The character strategizes about whom to help first.
- Approaches a house and rings the doorbell.
- A pair of figures opens the door; dialogue exchanged about assisting with tasks.
- A comedic miscommunication results in a chase sequence down the porch stairs.
- One figure dramatically announces affection before being rejected.

## Background Elements

- Yellow painted fence
- Outdoor walkways and grass patches
- House exterior with green stairs and doorframe
- Residential details such as mailboxes and wall lines

## Condition Observations

- **Toning:** Noticeable brown toning throughout page.
  - **Edges:** Light rub at bottom; right edge smooth.
  - **Corners:** Moderate rounding.
  - **Surface:** Clean; no staining.
  - **Color:** Uniform saturation; no fading.
  - **Binding:** Good stability in gutter.
- 

## Inside Page 3 (IMG\_0821.jpeg)

## Overall Setting & Layout

A full-color story page with eight rectangular panels showing errand-running gone wrong, misunderstandings, and a humorous plot involving a bag mix-up (lima beans vs. grasshoppers).

## Panel-by-Panel Content Highlights

- A figure pleads for help carrying a bag “for my mother!”
- The bag is exchanged repeatedly; characters run across outdoor paths and park areas.

- A comedic misunderstanding leads one character to believe a bag of insects was given instead of beans.
- At a vegetable stand, the shopkeeper interacts with the figure, who presents the wrong bag.
- A slapstick scene occurs when the shopkeeper is startled, with items flying from the counter.
- The final panel shows the character determined to avoid further mistakes while running across the storefront.

## Background Elements

- Parks, trees, fences, and walkways
- A produce counter with fruit displays
- Wooden posts and signboards

## Condition Observations

- **Toning:** Heavy, especially along spine edge.
- **Edges:** Mildly worn but intact.
- **Corners:** Rounded; upper corner slightly creased.
- **Surface:** Clean except for faint speckling.
- **Color:** Good intensity; no registration issues.
- **Binding:** Secure; no centerfold stress.

---

## Inside Page 4 (IMG\_0820.jpeg)

*(Page is displayed upside-down in the photo; observations adjusted accordingly.)*

## Overall Setting & Layout

A full-color nine-panel sequence featuring a continuation of the bird-nest storyline (matching the centerfold theme): climbing trees, interacting with birds, falling, and comedic mishaps.

## Panel-by-Panel Content Highlights

- A figure sleeps in a nest at the top of a tree; small birds gather around.
- Attempts to copy bird behavior lead to leaning forward, flapping arms, and ultimately falling.
- The fall panel includes a large, bold **"AWFUL THUD!"** sound effect.
- Later panels show the character stuck in foliage, encountering a bird nest with a large bird present, and escaping.

- End of page shows the character walking away from the tree at twilight.

## Background Elements

- Multiple trees with patterned bark structure
- Bushes and grassy terrain
- Dawn or evening sky gradient in final panel
- Nest structures and detailed foliage lines

## Condition Observations

- **Toning:** Heavy throughout; darker top and spine edges.
  - **Edges:** Outer edge smooth; no chips.
  - **Corners:** Rounded and soft.
  - **Surface:** No stains, writing, or moisture marks.
  - **Color:** Bright and evenly printed.
  - **Binding:** Stable; no tearing.
- 

## Overall Inside Pages Impression

Across all inside pages:

- Strong, consistent color retention
  - No tears, chips, writing, or moisture damage
  - Stable binding, clean gutters
  - Heavy Golden Age toning but no brittleness
  - Rounded corners and mild abrasion consistent with mid-grade condition
-

## ☑ Spine Observations

☑ *Marge's Little Lulu Vol. 1 No. 24 – June 1950*



### Overall Setting

The comic is positioned horizontally on a white wire rack, allowing a clear side-profile view of the entire spine, from the top corner to the bottom edge. This angle reveals curvature, abrasion patterns, color breaks, and cover lift.

### Spine Shape & Alignment

- A **moderate spine roll** is present, leaning toward the front cover.
- The front cover arches upward slightly, while the back cover rests lower and flatter.
- The roll is even from top to bottom, not sharply creased or folded.

### Spine Surface Condition

- The patterned spine (yellow/orange with repeating smile faces) shows **consistent abrasions**, including:
  - Numerous **white color-break lines** along the entire length.
  - Small **chips** where the top color layer has rubbed away.
  - General dulling and scuffing consistent with handling.
- The edges of the spine appear slightly compressed, particularly near the bottom.

### Staple Region (General / Not Close-Up View)

- The staple positions produce slight outward bumps but appear fully seated beneath the cover.
- No bulging or misaligned staple lines visible from this vantage point.
- No spine splitting evident along staple locations.

## Corners & Edges

- **Top spine corner:** mildly rounded with small abrasions.
- **Bottom spine corner:** more compressed but still intact.
- Spine edge shows mild fraying.

## Structural Integrity

- No full tears or cracks along the spine edge.
- Cover remains firmly attached on both sides.
- Despite cosmetic wear, the spine maintains solid structure.

## Overall Spine Impression

A structurally sound spine with moderate spine roll and notable cosmetic wear—including color breaks, scuffing, and small chips—consistent with mid-grade Golden Age condition.

---

## ☑ Staples Observations

☑ *Marge's Little Lulu Vol. 1 No. 24 – June 1950*

### Upper Staple (IMG\_0826.jpeg)



#### Metal Condition

- Mild oxidation, visible as darkening along the staple surface.
- Metal remains straight and fully seated.

#### Surrounding Paper

- Noticeable **paper tear** directly beneath the staple, extending horizontally.
- Small **fiber lift and fraying** along both entry and exit points.
- Color layer (orange face graphic) shows **abrasion and flaking** around the puncture.
- A small portion of the cover has been pulled away, exposing lighter paper.

### Structural Integrity

- Despite tearing, the staple still anchors the cover securely.
  - No detachment or loosening visible.
- 

### Lower Staple (IMG\_0825.jpeg)



### Metal Condition

- Slight oxidation; no rust migration into surrounding paper.
- Staple lies flat and flush against the spine.

### Surrounding Paper

- Minor **chipping** at the staple exit point.
- Small **crease radiating** outward from the lower edge of the staple.

- Patterned spine area (“smiley face” graphic) shows color rub and light ink loss around the staple hole.
- Paper slightly compressed, but no full tear as seen at upper staple.

### **Structural Integrity**

- Staple remains firmly attached.
- Cover shows no signs of pull or interior separation.

---

## **Brittleness Test Observations**

- Marge's Little Lulu Vol. 1 No. 24 – June 1950*



## Overall Bend Behavior

- The lifted corner curls smoothly with a gentle arc and **does not snap**, resist, or create a sharp fold.
- The page maintains flexibility even with **deep brown toning**, which is typical of early-1950 newsprint.

## Edges & Fibers

- The outer edge shows pronounced oxidation but remains **structurally intact**.
- No fiber separation, chipping, or crumbling is visible.
- The corner folds cleanly without shedding fragments.

## Surface Response

- No cracking in the color layer at the bend point.
- No new crease lines are formed as the page is flexed.
- The paper behaves uniformly across both the upper sheet and the sheet beneath.

## Structural Integrity

- No splitting between paper layers.
- No micro-tears appear at the bend.
- Paper retains elasticity and resilience despite age.

## Brittleness Test Rating: 8 / 10

*Fully flexible for Golden Age stock; toned but not brittle.*