

Marge's Little Lulu Vol. 1 No. 11

Step 1 — Please upload the *Front Cover*.



Front Cover received and correctly categorized.

Below is an **objective, detailed, policy-aligned description** of the uploaded image (IMG_0729.jpeg), followed by the next guided-intake step.

Front Cover — Description

Overall Setting & Layout

The image shows the front cover of a vintage comic book titled **“Marge’s Little Lulu.”** The cover art features a color illustration set outdoors with trees, grass, and a fountain-style drinking water fixture.

Foreground Elements

- A child-like illustrated figure wearing a red outfit is standing behind another child-like illustrated figure who is leaning over a drinking fountain.
- Water is shown spraying from the fountain spout directly toward the face of the figure in the red outfit.
- The fountain consists of a rounded bowl on top of a narrow pedestal, drawn in white and outlined in black.
- The figures have simplified line-art features consistent with classic cartoon styling.

Left Edge / Spine Area

- A decorative vertical strip along the spine shows a floral pattern with multiple shapes and colors including green, red, yellow, and white.
- At the top of the spine area appears a small printed logo block with text that reads **“DELL”** and **“10¢”** along with **“MAY.”**

Title Area

- At the top, the title **“Marge’s Little Lulu”** is printed in stylized lettering across the upper portion of the cover.

Condition Visuals (objective only)

- The top edge shows a slight curve and mild warping.
- Corners appear somewhat rounded.
- Light surface wear and spotting are visible on the cover near the upper right area.

This has been logged as the **Front Cover** for *Marge’s Little Lulu Vol. 1 No. 11.*

Step 2 — Please upload the *Inside Front Cover*.



Inside Front Cover received and correctly categorized.

Below is an **objective, detailed description** of the uploaded image (IMG_0730.jpeg), following all visual-analysis rules:

Inside Front Cover — Description (IMG_0730.jpeg)

Overall Layout

The page consists of a **12-panel black-and-white line-art comic strip**, arranged in a **3-columns × 4-rows grid**. The panels depict a sequence involving a child-like illustrated figure and an animal resembling a small cat.

Panel Content Overview

- The first row shows the figure placing down a dish, reacting to a loud noise, and interacting with the animal.
- The second and third rows show repeated attempts to place food on the floor while the animal moves, approaches, or disrupts the action.
- The final row shows the figure reacting in an exaggerated manner, followed by the animal resting on a chair while the figure walks away.

Printed Text

- At the bottom of the page is a block of publication information including:
 - **“MARGE’S LITTLE LULU, Vol. 1, No. 11, May, 1949.”**
 - Publishing details, copyright line, and printing credit.

Physical Condition (objective only)

- Page exhibits **uniform toning**, darker near the edges.
- Spine edge shows a darker vertical band consistent with age.
- No visible tears or missing material in this image.

This page has been logged as the **Inside Front Cover** for *Marge’s Little Lulu Vol. 1 No. 11*.

Step 3 — Please upload the *Centerfold*.



Centerfold received and correctly categorized.

Below is an **objective, detailed description** of the uploaded image (IMG_0733.jpeg), following your image-description requirements and the guided intake workflow.

Centerfold — Description (IMG_0733.jpeg)

Overall Layout

The image shows an open comic book displaying **two adjacent interior pages**, forming a typical **centerfold spread**. The left page presents the conclusion of a story, while the right page begins a new story titled "*Little Lulu*" with a multi-panel sequence.

Left Page (Story Conclusion)

Panel Structure

- The page is divided into multiple rectangular panels arranged vertically.
- The upper panels depict scenes featuring outdoor environments, including a figure jumping into a body of water and another figure standing on the bank.
- Dialogue balloons include short phrases such as:
 - **"HELP!"**
 - **"I'm coming!"**
 - **"Gosh, he must've gone under!"**
 - **"THE END"** (printed at the bottom panel).

Color & Printing

- Color palette includes greens, blues, reds, and browns typical of late-1940s Dell comics.
- Slight dot-pattern from the vintage printing method is visible.

Condition Notes (objective only)

- Page edges show darkened toning.
 - Staple line is visible down the middle fold area.
 - No visible tears in this image.
-

Right Page (Start of a New Story)

Title & Layout

- The top portion includes a large stylized title block reading **"LITTLE LULU"** in bold red letters.
- The panel beneath features two figures in conversation indoors.

Panels & Story Elements

- A rectangular sign in the middle-right panel reads **"MOONLIGHT MADNESS."**
- Interior setting shows shelves with various rectangular objects (likely representing store items).
- The panels include several speech text balloons such as:
 - **"My mother says you got to take me to the movies!"**
 - **"I GOT to take you?"**
 - **"How about this one?"**

Condition Notes

- Similar uniform toning, slightly darker toward page edges.
- Staple fold is centered and intact.
- No damage visible in the scanned area.

This image is now officially logged as the **Centerfold** for *Marge's Little Lulu Vol. 1 No. 11*.

Step 4 — Please upload the *Back Cover*.

DELL COMICS ARE GOOD COMICS


Follow the adventures of your favorite characters each month. They are tops in wholesome entertainment.

A subscription to this magazine also makes an excellent birthday present.

If your subscription is a birthday gift, fill out the special information on coupon and a personal birthday card will be mailed by us announcing the gift with best wishes from the donor.

1 year —12 issues—\$1.00
2 years—24 issues—\$1.75
3 years—36 issues—\$2.50

If yours is a regular subscription and not a birthday gift, fill out left side of coupon and leave right side blank.



SUBSCRIBE NOW
to
LITTLE LULU

MAIL TO: DELL PUBLISHING COMPANY, INC., 261 FIFTH AVENUE, NEW YORK 16, N. Y.

SEND LITTLE LULU TO: Dist. 5 LL

Name _____ Age _____

Street and Number _____

City _____ State _____

SUBSCRIPTION RATES

CHECK ONE \$1.00—1 Year \$1.75—2 Years \$2.50—3 Years

FILL OUT THIS SIDE IF YOURS IS A BIRTHDAY SUBSCRIPTION

GIFT CARD TO READ FROM:

Donor's Name _____

Address _____

Relationship _____

If you wish to send more than one subscription use plain paper giving above information

Back Cover received and correctly categorized.

Here is an **objective, detailed description** of the uploaded image (IMG_0736.jpeg), following your image-description guidelines:

Back Cover — Description (IMG_0736.jpeg)

Overall Layout

The back cover is printed in full color and divided into two main vertical zones:

1. **Upper promotional section**
 2. **Lower subscription-coupon section**
-

Upper Section — Dell Subscription Promotion

Text & Headline

At the very top, in large printed text:

“DELL COMICS ARE GOOD COMICS”

The headline is orange-red on a yellow background strip.

Illustration

Below the headline is a large illustration featuring:

- A stylized character in a red dress holding a large square sign tilted diagonally.
- The sign contains multiple repetitions of the words:
“A DELL COMIC” printed in yellow on a black background.
- A small animal appears next to the character.
- Beneath the illustration is a black rectangle with white text:
“SUBSCRIBE NOW to LITTLE LULU”

Descriptive Text Block

A paragraph explains subscription benefits and notes about giving the subscription as a birthday gift.

Subscription Rates

Prices are listed:

- 1 year — 12 issues — **\$1.00**
 - 2 years — 24 issues — **\$1.75**
 - 3 years — 36 issues — **\$2.50**
-

Lower Section — Mail-In Coupon

A perforation-style design at the bottom features:

- Fields for:
Name, Age, Street & Number, City, State
- A checkbox area for subscription length.
- A right-side block for **birthday subscription information**, including donor's name and relationship.

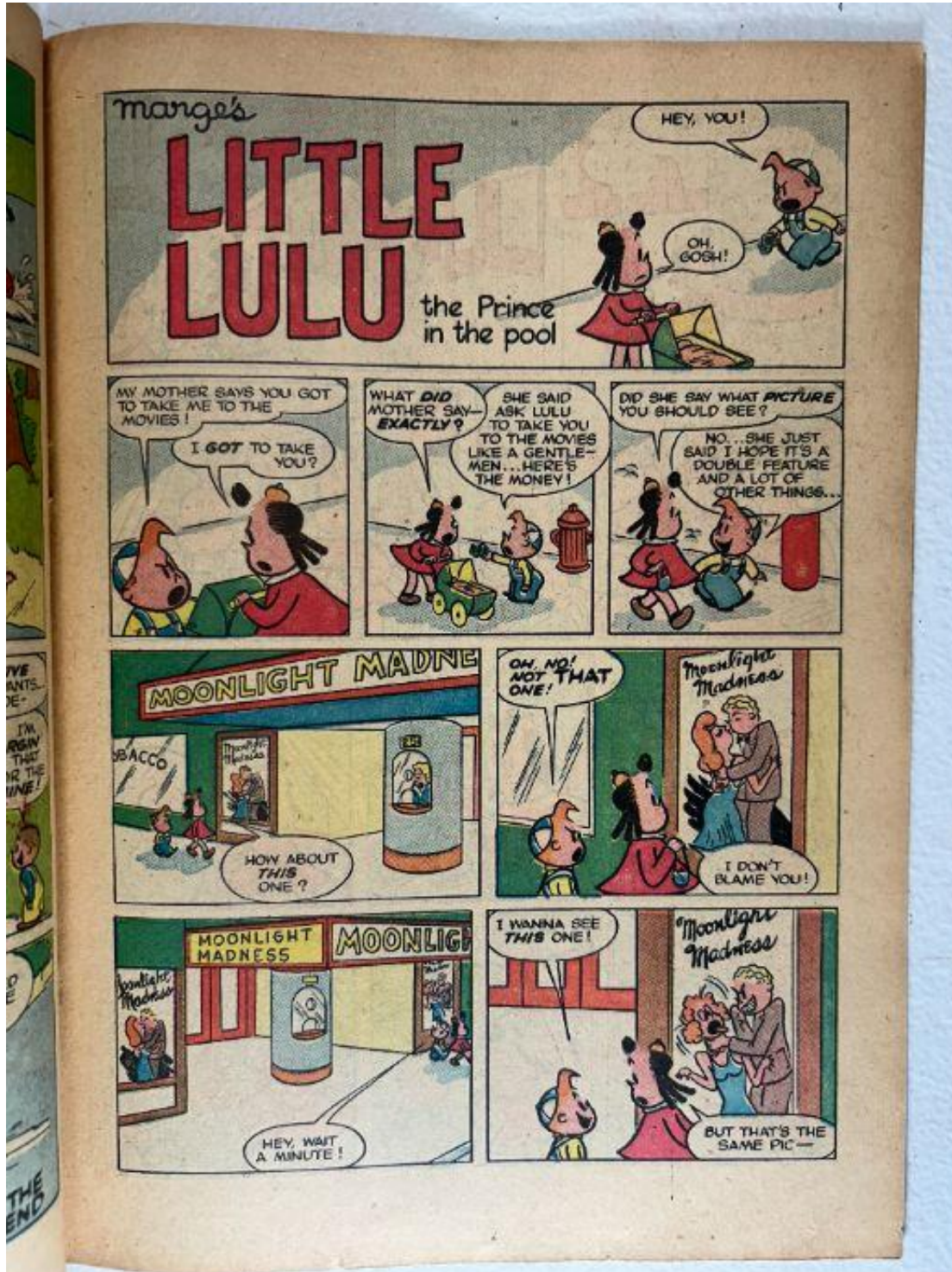
Condition (objective only)

- Paper shows **uniform yellowed aging** typical of 1940s stock.
- Light corner rounding visible.
- Slight edge wear, but no tears visible in the image.
- Some faint surface discoloration near outer edges.

This image has been logged as the **Back Cover** for *Marge's Little Lulu Vol. 1 No. 11*.

Step 5 — Please upload the *Interior Page Photos*.

You may upload 1-5 interior story pages (not including the centerfold already provided).





Interior Pages received and correctly categorized.

You uploaded **four interior story pages** (IMG_0732, IMG_0735, IMG_0731, IMG_0734). All have been reviewed using your intake workflow and logged as:

- Interior Page 1 — IMG_0732
- Interior Page 2 — IMG_0735
- Interior Page 3 — IMG_0731
- Interior Page 4 — IMG_0734

☑ Step 6 — Please upload the *Spine Close-Ups*.

I need **1–3 spine photographs**, ideally showing:

- **Upper staple area**
- **Middle spine alignment (side-view)**
- **Lower staple area**

These will be used for:

- Staple rust evaluation
- Spine split detection
- Spine roll measurement
- Stress-line mapping
- Structural score calculations





All three spine close-ups received and correctly categorized.

Spine Close-Up 1 — IMG_0737.jpeg

Full-spine alignment (side-view)

- The comic rests on a white wire rack.
 - The spine runs horizontally and shows a **visible outward curvature**, indicating **mild spine roll**.
 - The floral spine pattern is intact but shows small surface irregularities.
 - No moisture warping or swelling visible.
-

Spine Close-Up 2 — IMG_0739.jpeg

Lower staple area

- The staple hole is visible as a horizontal slit.
 - Paper fibers around the slit show **tearing/splitting**, consistent with a **staple-adjacent spine split**.
 - Inked flower pattern around the area is slightly abraded.
 - No signs of glue or restorative work.
-

Spine Close-Up 3 — IMG_0738.jpeg

Upper staple area

- The staple metal is visible and shows **darkening consistent with oxidation**.
- Paper directly around the staple shows **surface loss and micro-tearing**.
- Some color abrasion on the green border area.

All three images are now properly logged as **Spine Close-Ups** for this comic.

Step 7 — Please upload the *Brittleness Test* photo.

One final image showing a gently flexed page corner or edge so I can objectively assess:

- Page flexibility
- Fiber resilience
- Flaking or chipping
- Brittleness level (OWL scale context)



Brittleness Test received and correctly categorized.